

Job Name: 25-4787 - East Vine St Wall  
 Job Location: Lexington, KY  
 Contractor: Lagco Inc.

Plant: 100

3/18/2026 12:43:27 PM

Tech: Jared - A

PC: Celina Goff



**Structure ID: A3 (3)**

**P3 MH048LD12-24X36RECT**

**MH FLAT TOP w/24"x36" Hole F/G**

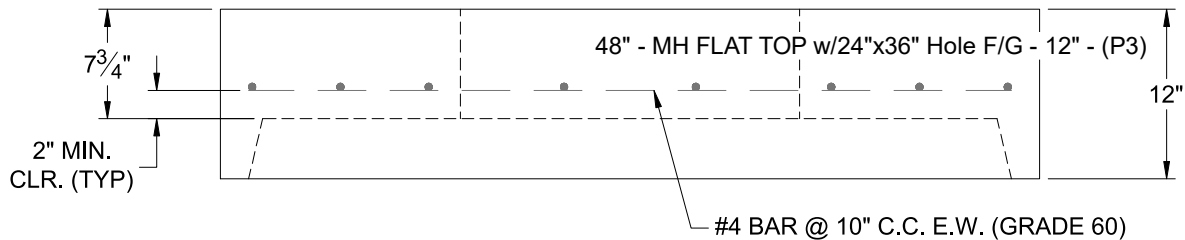
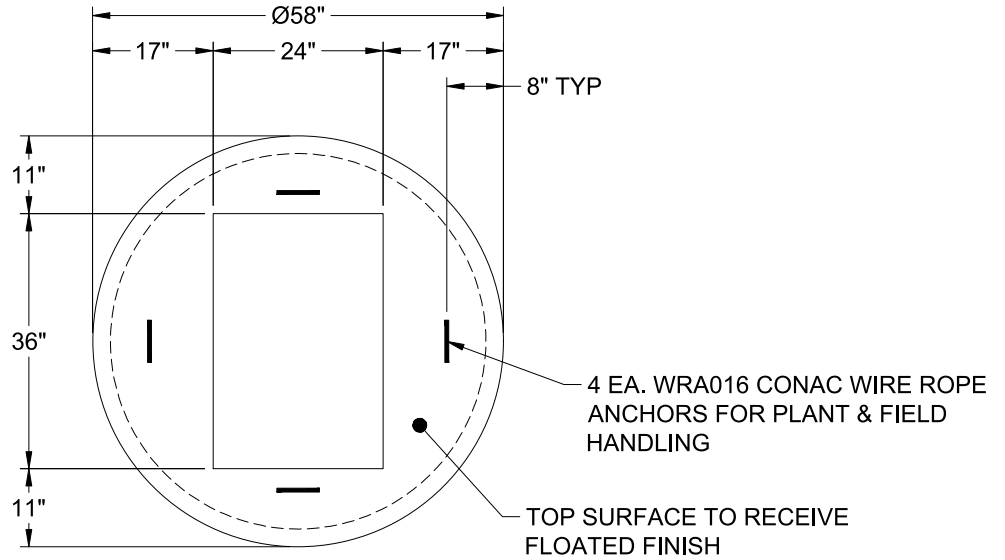
- P4) 24" x 36" - CASTING HEIGHT - 6"
- P3) 48" - MH FLAT TOP w/24"x36" Hole F/G - 12"
- P2) 48" - MH RISER Custom Ht T/G - 68"
- P1) 48" - MH BASE T/n - 72"
- 1) CASTING - HOE 525 LV SET (F/G/H)
- 2) 48" - Conseal CS-102 1.00"
- 1) 24" x 36" - Conseal CS-102 1.00"
- 1) Hole - 22
- 1) Hole - 18
- 1) Hole - 6
- 12) MH Step ML-10-TDS-NCR - 10"

0 lb  
 1300 lb  
 4641 lb  
 6184 lb  
 442 lb  
 0 lb  
 0 lb  
 0 lb  
 0 lb  
 0 lb  
 0 lb  
 0 lb  
 0 lb  
 \_\_\_\_\_  
 12567 lb

Structure Total:

Structure Notes:

1. PER LFUCG CBI TYPE D / ASTM C-913 SPECS
2. CONCRETE: 4,000 PSI AT 28 DAYS
3. REINFORCEMENT: #4 BAR @ 12" C.C. E.W. (GRADE 60) - 2" MIN. REBAR CLEARANCE (TYP)
4. HOE-525-LV FRAME, L-VANE GRATE, & CURB HOOD SUPPLIED BY ICAST
5. LIFTERS: 4 EA. WRA016 CONAC WIRE ROPE ANCHORS FOR PLANT & FIELD HANDLING
6. TOP SURFACE TO RECEIVE FLOATED FINISH



Coating (Int):  
 Coating (Ext):

Seam Up: Flat  
 Seam Dn: Groove

Wall Thickness: 5"

Height (Ext): 12"

Weight (Net): 1300 lb  
 Volume (Net): 0.46cu.yd