

Job Name: 25-4787 - East Vine St Wall	Plant: 100	Tech: Jared - A	
Job Location: Lexington, KY Contractor: Lagco Inc.	3/18/2026 4:17:33 PM	PC: Celina Goff	

Structure ID: A2 (1)

P1 BX2424-08BA60

BOX BASE 8inW, 8inF T/n

P3) 8" x 120" - CB INLET KY B 10' TOP F/G - 9"	1660 lb
P2) 24" x 120" - CB INLET KY B 10' BOTTOM LEFT T/G - 17"	2650 lb
P1) 24" x 24" - BOX BASE 8inW, 8inF T/n - 60"	5707 lb
1) CASTING - HOE KY-345 SET (CBI B)	290 lb
1) 24" x 24" - Conseal CS-102 1.00"	0 lb
1) Hole - 26	0 lb
1) Hole - 22	0 lb
Structure Total:	10308 lb

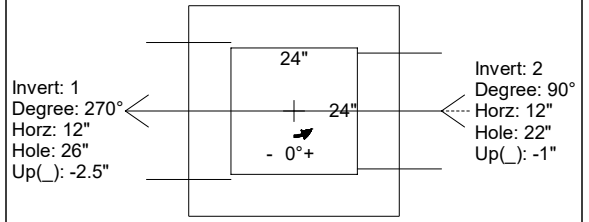
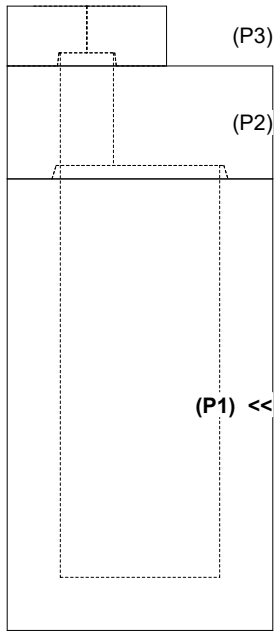
- Structure Notes:**
1. PER KYTC CBI TYPE B (10') / ASTM C-913 SPECS
 2. CONCRETE: 4,000 PSI AT 28 DAYS
 3. REINFORCEMENT: #5 BAR @ 12" C.C. E.W. (GRADE 60) - 2" MIN. REBAR CLEARANCE (TYP)
 4. NO STORM INVERT
 5. NO STEPS
 6. HOE KY-345 FRAME & GRATE SUPPLIED BY ICAST

Rim: 953.38' Rim to Invert: 7.17' Slack: 0.04" Sump: 0" Step Position:

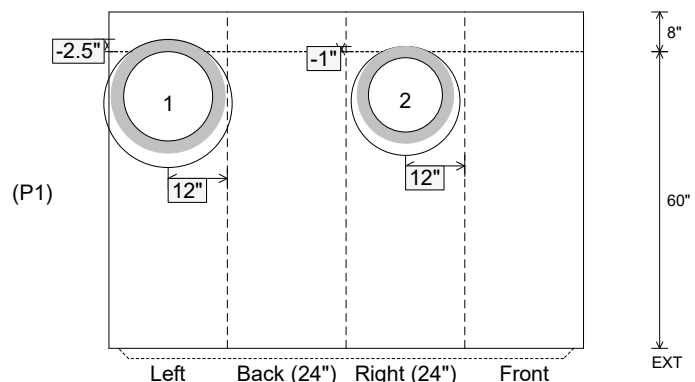
Position	Elev	Angle	Ext. (cw)	Pipe	Pipe OD	Connector	Hole	Horz Size	Up ()	Offset
Invert 1	946.21'	270°	20"	18" RCP B WALL	23"	Hole 26	26"	25"	-2.5"	0"
Invert 2	946.31'	90°	20"	15" RCP B WALL	19.5"	Hole 22	22"	22"	-1"	0"
Invert 3										
Invert 4										
Invert 5										
Invert 6										
Invert 7										
Invert 8										

RIGHT-SIDE UP VIEW (int. dimensions)

UPSIDE-DOWN VIEW (int. dimenions)



INSIDE WALL DIMENSIONS



Coating (Int): Coating (Ext):	Seam Up: Tongue Seam Dn: n/a	Wall Thickness: 8" Floor Height: 8"	Height (Int): 60" Height (Ext): 68"	Weight (Net): 5707 lb Volume (Net): 1.46cu.yd
----------------------------------	---------------------------------	--	--	--