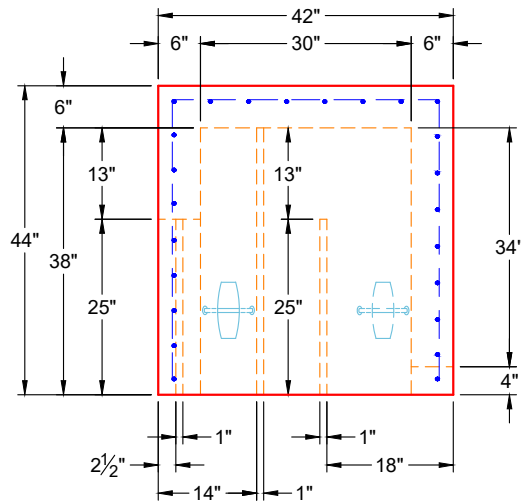
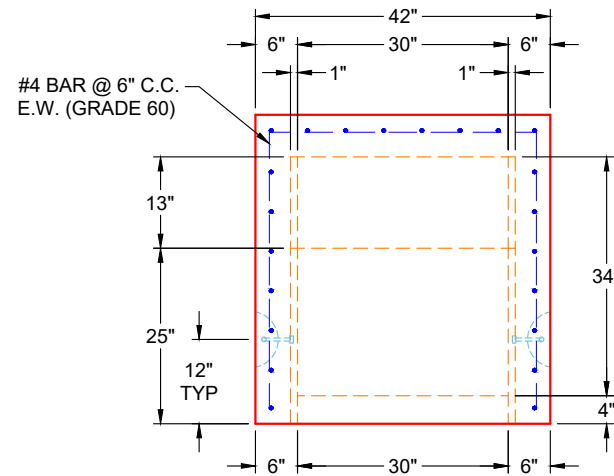


**PLAN VIEW
(UPSIDE DOWN)**

1" DEEP X 1" WIDE X 38" LONG SLOT CAST INTO WALLS ON BOTH SIDES (FOR 3/4" HDPE BAFFLE)



**VIEW A
(UPSIDE DOWN)**



**VIEW B
(UPSIDE DOWN)**

GENERAL NOTES:

1. MANUFACTURED PER ASTM C-913 LATEST REVISION)
2. CONCRETE: 5,000 PSI AT 28 DAYS
3. REINFORCEMENT: #4 BAR @ 6" C.C. E.W. (GRADE 60) - 2" MIN. REBAR CLEARANCE (TYP)
4. JOINT SEALED WITH CONCRETE SEALANTS CS-102 - MEETS ASTM C-990 SPECIFICATIONS (SUPPLIED BY ICAST)
5. WEIGHT: 3,200 LBS
6. 3/4" HDPE WEIR, 3/4" HDPE BAFFLE, & STAINLESS STEEL HOODED SCREEN SUPPLIED BY OTHERS
7. SPECIAL PRE-ASSEMBLY OF INTERNALS BY ICAST

PRODUCTION WORK ORDER

PRODUCT I.D.: BX3030-06VH

DESCRIPTION: 30" X 30" X 38" BASE, 6" WALLS & 6" FLOOR



QUALITY CONTROL CHECKLIST

- ALL DIMENSIONS CORRECT.
- LIFTERS INSTALLED.
- HOLE LOCATION(S) CORRECT.
- REINFORCING & SPACING CORRECT.
- SURFACE QUALITY ACCEPTABLE.
- EDGES CHAMFERED.
- ALL PATCHWORK ACCEPTABLE.

PRODUCT VIEW: UPSIDE DOWN

CUSTOMER: CONVERGENT WATER TECHNOLOGIES

PLANT: BEAVER DAM, KY

PROJECT: WAWA PRETX CURB INLET

WEIGHT: 3,200 LBS

STRUCTURE: 54782 (3)

TOP SECTION JOINT: N / A

ORDER NO: 25-4782

BASE SECTION JOINT: FLAT

PE: J.H. ROSS

DRAWING: K. CARDWELL

QC CHECK INITIALS:

DATE: 01/14/26

SCALE: NTS

PG. 1 OF 1

Job Number:

25-4782

Job Name:

Wawa Pretx Curb Inlet

Structure:

54782 (3)

Note:

Special Pre-Assembly Of Internals To
Be Performed By iCast