

Job Name: 25-4779 - 877786 Founders Point Elem School  
 Job Location: Charlestown, IN  
 Contractor: Contech Engineering Solutions

Plant: Beaver Dam  
 1/6/2026 12:56:38 PM

Tech: J. Coppage  
 PC: T. Sekula



**Structure ID: 15-CS-6**

**P3 MH072LD15-30ECC**

**MH FLAT TOP SPEC. (30" ECC HOLE)**

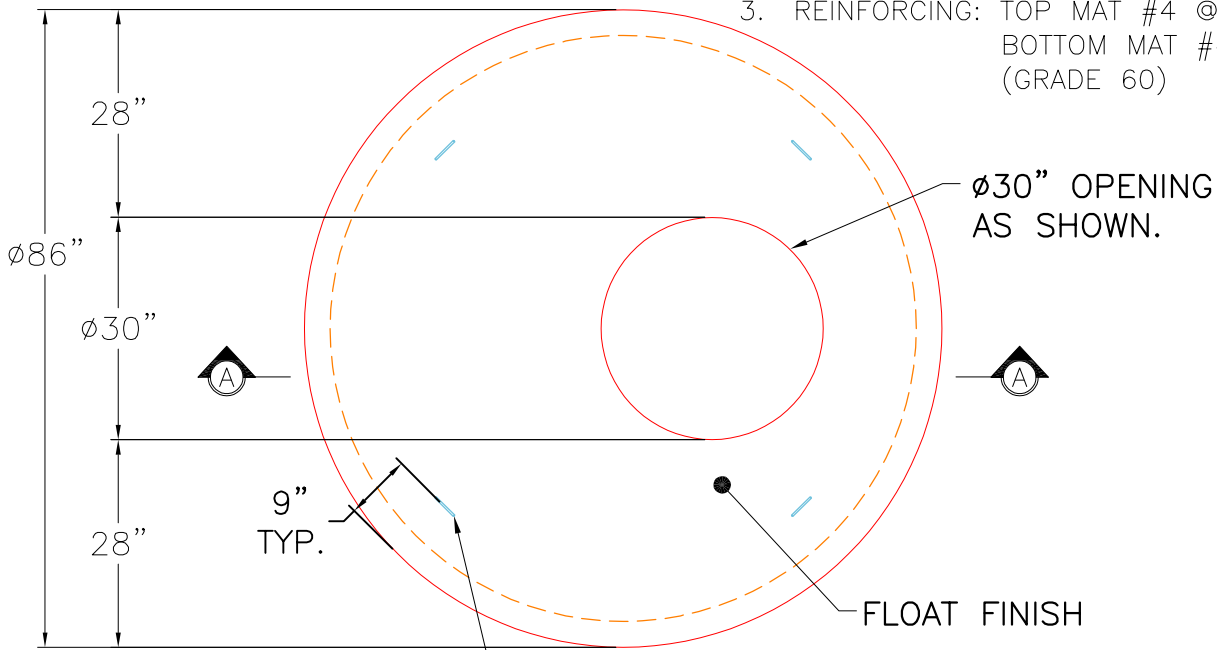
- P4) 30" - CASTING HEIGHT - 4"
- P3) 72" - MH FLAT TOP SPEC. (30" ECC HOLE) - 15"
- P2) 72" - MH RISER Custom Ht - 84"
- P1) 72" - MH BASE w/FLANGE - 24"
- 1) CVSTENCILING
- 1) ASSEMBLY REQUIRED
- 1) SECONDARY POUR
- 2) 72" - Conseal CS-102 1.00"
- 2) Hole - 16

0 lb  
 4661 lb  
 11969 lb  
 8771 lb  
 0 lb  
 0 lb  
 0 lb  
 0 lb  
 0 lb  
 0 lb  
 0 lb  
 Structure Total: 25401 lb

**Structure Notes:**  
 (4" TALL CASTING PROVIDED BY OTHERS)  
 LIFTING ANCHORS TO BE INSTALLED  
 ON THE OUTSIDE OF THE STRUCTURE  
 ICAST TO INSTALL THE INTERNALS  
 CONTECH'S LOGO AS WELL AS THE  
 INLET AND THE OUTLET MUST BE  
 STENCILED ONTO THE STRUCTURE

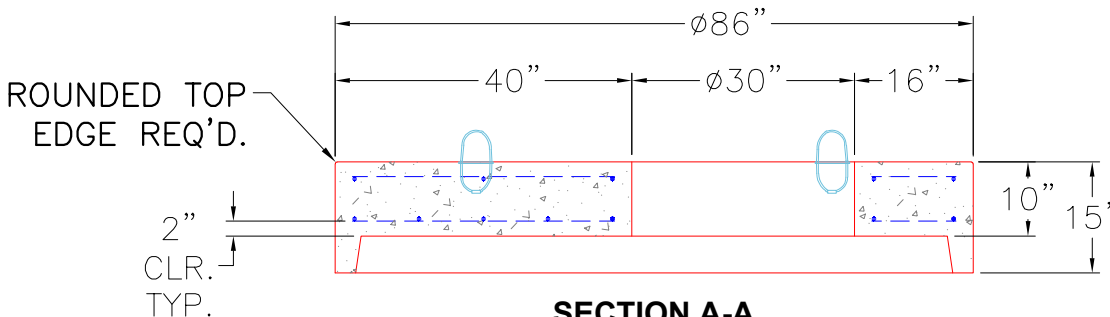
GENERAL NOTES:

1. MANUFACTURED TO ASTM C-478 (LATEST REVISION).
2. CONCRETE 5,000 PSI AT 28 DAYS.
3. REINFORCING: TOP MAT #4 @ 18" O.C. E.W.  
 BOTTOM MAT #4 @ 9" O.C. E.W. (GRADE 60)



4 EA. CONAC WRA016 WIRE ROPE ANCHORS CAST IN.

**PLAN VIEW**



**SECTION A-A**

Coating (Int): Coating (Ext):	Seam Up: Flat Seam Dn: Groove	Wall Thickness: 7"	Height (Ext): 15"	Weight (Net): 4661 lb Volume (Net): 1.19cu.yd
----------------------------------	----------------------------------	--------------------	-------------------	--