

Structure ID: 15-CS-6

P1 MH072BAEVF

MH BASE w/FLANGE

P4) 30" - CASTING HEIGHT - 4" P3) 72" - MH FLAT TOP SPEC. (30" ECC HOLE) - 15" P2) 72" - MH RISER Custom Ht - 84" P1) 72" - MH BASE w/FLANGE - 24" 1) CVSTENCILING 1) ASSEMBLY REQUIRED 1) SECONDARY POUR 2) 72" - Conseal CS-102 1.00" 2) Hole - 16	0 lb 4661 lb 11969 lb 8771 lb 0 lb 0 lb 0 lb 0 lb 0 lb 0 lb ----- 25401 lb	Structure Notes: (4" TALL CASTING PROVIDED BY OTHERS) LIFTING ANCHORS TO BE INSTALLED ON THE OUTSIDE OF THE STRUCTURE ICAST TO INSTALL THE INTERNALS CONTECH'S LOGO AS WELL AS THE INLET AND THE OUTLET MUST BE STENCILED ONTO THE STRUCTURE
--	---	--

FIRST POUR DRAWING

FIRST POUR - 6,967 LBS

SECOND POUR - 1,804 LBS

TOTAL - 8,771 LBS

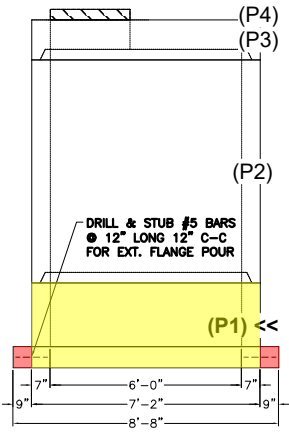
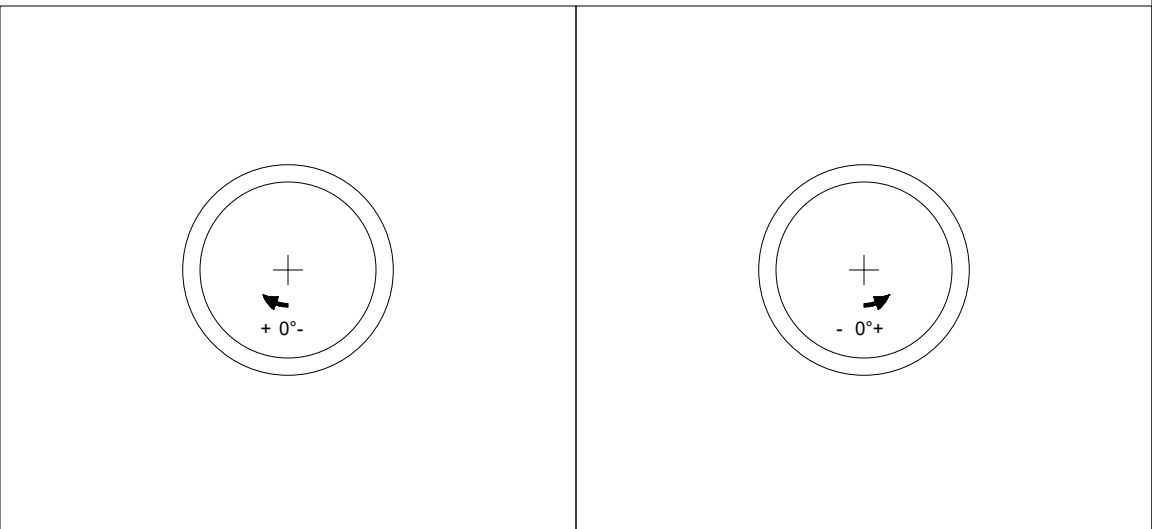
Structure Total: 25401 lb

Rim: 495.58' Rim to Invert: 5.1' Slack: 3.2" Sump: 69" Step Position:

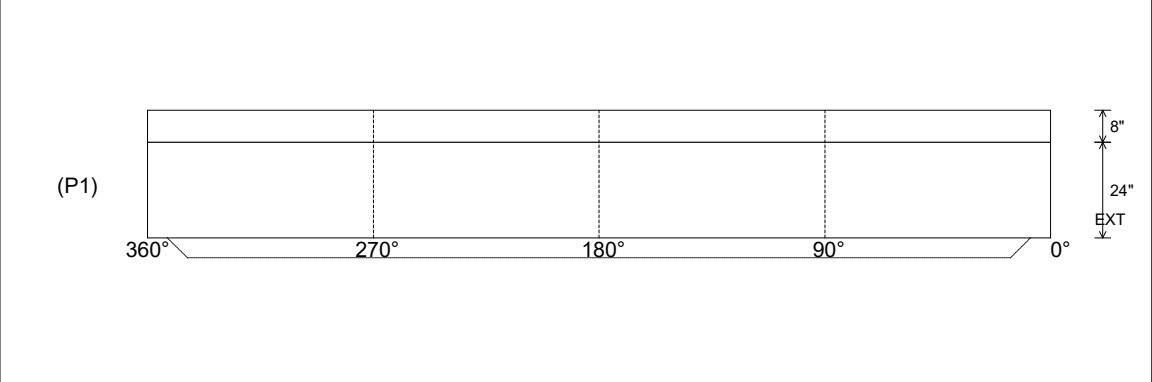
Position	Elev	Angle	Ext. (cw)	Pipe	Pipe OD	Connector	Hole	Horz Size	Up (L)	Offset
Invert 1										
Invert 2										
Invert 3										
Invert 4										
Invert 5										
Invert 6										
Invert 7										
Invert 8										

RIGHT-SIDE UP VIEW (int. dimensions)

UPSIDE-DOWN VIEW (int. dimenions)



INSIDE WALL DIMENSIONS



Coating (Int): Coating (Ext):	Seam Up: Tongue Seam Dn: n/a	Wall Thickness: 7" Floor Height: 8"	Height (Int): 24" Height (Ext): 32"	Weight (Net): 8771 lb Volume (Net): 2.24cu.yd
----------------------------------	---------------------------------	--	--	--

Structure ID: 15-CS-6

P1 MH072BAEVF

MH BASE w/FLANGE

P4) 30" - CASTING HEIGHT - 4" P3) 72" - MH FLAT TOP SPEC. (30" ECC HOLE) - 15" P2) 72" - MH RISER Custom Ht - 84" P1) 72" - MH BASE w/FLANGE - 24" 1) CVSTENCILING 1) ASSEMBLY REQUIRED 1) SECONDARY POUR 2) 72" - Conseal CS-102 1.00" 2) Hole - 16	0 lb 4661 lb 11969 lb 8771 lb 0 lb 0 lb 0 lb 0 lb 0 lb 0 lb ----- 25401 lb	Structure Notes: (4" TALL CASTING PROVIDED BY OTHERS) LIFTING ANCHORS TO BE INSTALLED ON THE OUTSIDE OF THE STRUCTURE ICAST TO INSTALL THE INTERNALS CONTECH'S LOGO AS WELL AS THE INLET AND THE OUTLET MUST BE STENCILED ONTO THE STRUCTURE
--	---	--

SECOND POUR DRAWING

FIRST POUR - 6,967 LBS

SECOND POUR - 1,804 LBS

TOTAL - 8,771 LBS

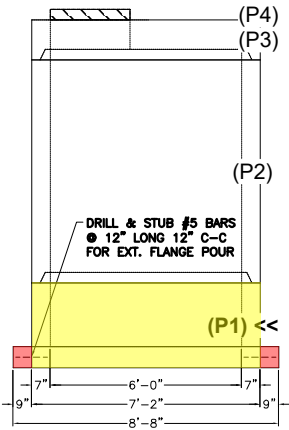
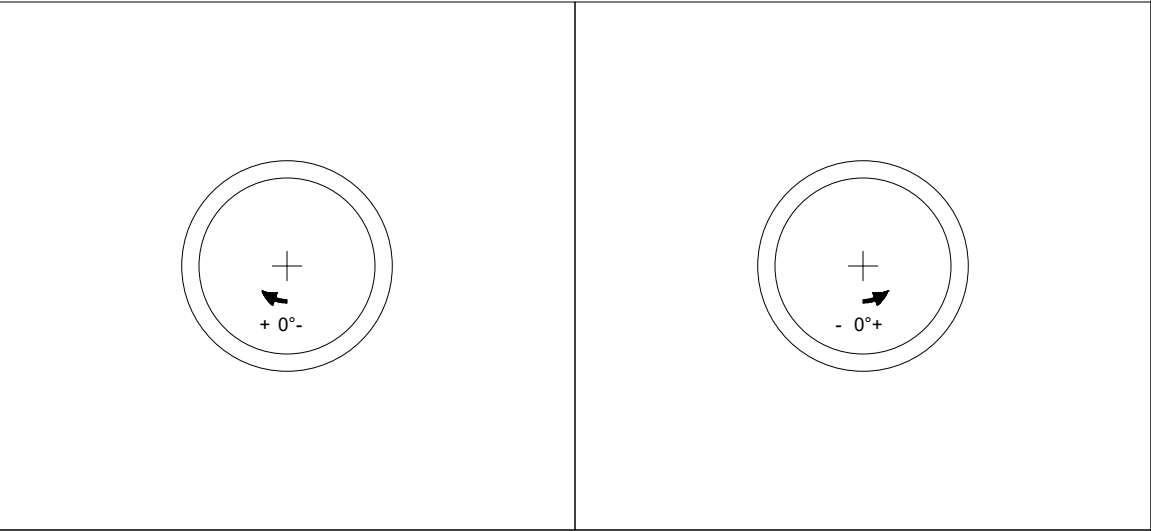
Structure Total: 25401 lb

Rim: 495.58' Rim to Invert: 5.1' Slack: 3.2" Sump: 69" Step Position:

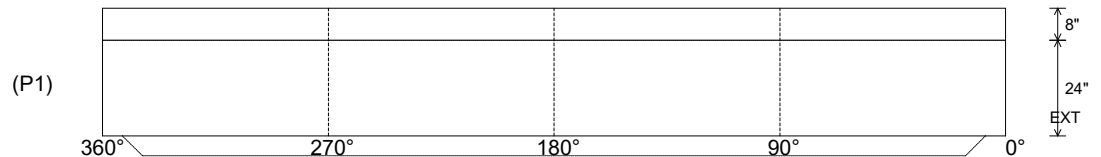
Position	Elev	Angle	Ext. (cw)	Pipe	Pipe OD	Connector	Hole	Horz Size	Up ()	Offset
Invert 1										
Invert 2										
Invert 3										
Invert 4										
Invert 5										
Invert 6										
Invert 7										
Invert 8										

RIGHT-SIDE UP VIEW (int. dimensions)

UPSIDE-DOWN VIEW (int. dimenions)



INSIDE WALL DIMENSIONS



Coating (Int): Coating (Ext):	Seam Up: Tongue Seam Dn: n/a	Wall Thickness: 7" Floor Height: 8"	Height (Int): 24" Height (Ext): 32"	Weight (Net): 8771 lb Volume (Net): 2.24cu.yd
----------------------------------	---------------------------------	--	--	--