



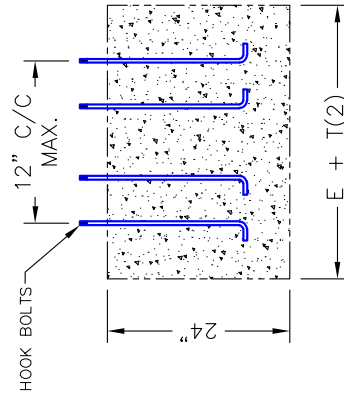
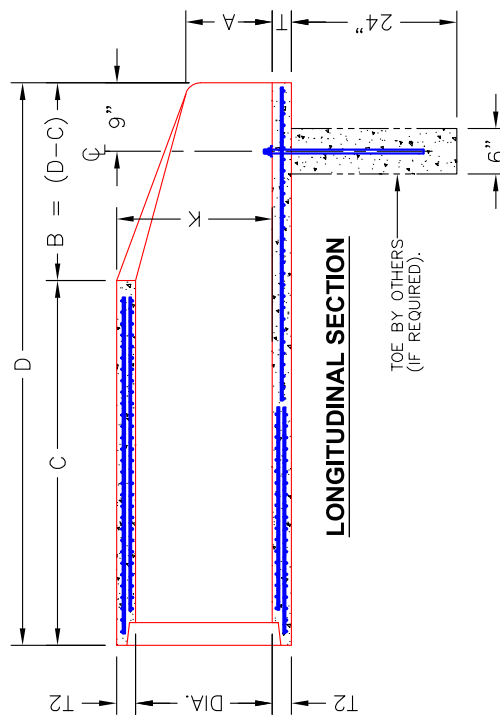
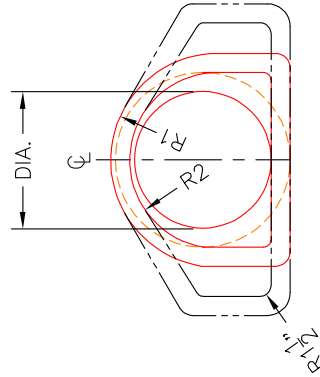
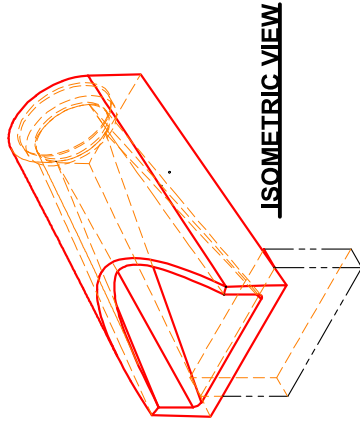
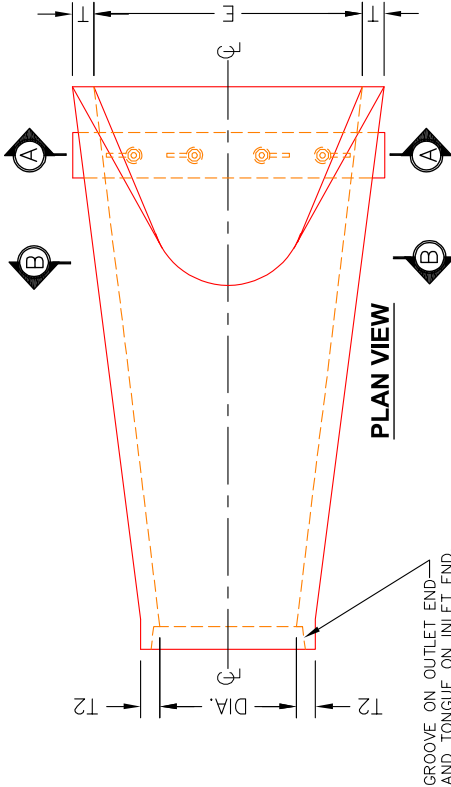
Structure ID: FES 506 (5)

P1 FES12B

12" - FLARED END SECTION BELL (OUTLET) F/F

NOTES:

- ALL INDIANA DEPARTMENT OF TRANSPORTATION SPECIFICATIONS SHALL BE MET OR EXCEEDED. FLARED END SECTION WILL ALSO BE MANUFACTURED AND TESTED IN ACCORDANCE WITH ASTM C-76 OR ASTM C-655 AND ASHTO M-170 SPECIFICATIONS.
- ALL PIPE JOINTS MEET ASTM C-443 AND C-361 SPECIFICATIONS.
- INSTALL REINFORCED CONCRETE PIPE PER ASTM C-1479—STANDARD PRACTICE FOR INSTALLATION OF PRECAST CONCRETE PIPE.
- FLARED END SECTION REINFORCING IS IN ACCORDANCE WITH ASTM C-76.
- WEIGHT SHOWN IS CALCULATED USING 150 LBS. PER CUBIC FT. UNIT WEIGHT OF CLASS A CONCRETE.
- CONCRETE TOE ANCHOR TO BE FIELD POURED BY OTHERS, IF REQUIRED.



SECTION A-A

CONCRETE PIPE TOE ANCHOR
 (POURED ON SITE BY OTHERS, IF REQUIRED)

INFRASTRUCTURE PRECAST, INC.
 981 WEST 7TH ST., BEAVER DAM, KY. 42320
 PHONE: (270) 363-2238. FAX: (270) 298-7424

INDOT PRECAST CONCRETE
 FLARED END SECTION

DRAWING NO.: ET-INDOT-300 | DATE: 05-05-25
 REVIEWED BY: J.H. ROSS, PE | DRAWN BY: N. RICHARDS
 WEB: WWW.ICASTINC.COM | SCALE: NTS

| DIA. | T (MIN.) | T2 (MIN.) | A (±1") | B (±1") | C (±1") | D (±1") | E (±1") | K (FT.) | R1 | R2 | APPROX. WEIGHT (LBS.) |
|------|----------|-----------|---------|---------|---------|---------|---------|---------|---------|-----|-----------------------|
| 12" | 2" | 4" | 6" | 1'-11" | 4'-3" | 6'-2" | 2'-0" | 1.34' | 10 1/8" | 9" | 1,400 |
| 15" | 2 1/2" | 4 1/8" | 7 1/2" | 2'-3" | 4'-0" | 6'-3" | 2'-6" | 1.63' | 12 1/2" | 11" | 1,950 |
| 18" | 2 3/4" | 4 3/8" | 9" | 2'-1" | 4'-1" | 6'-2" | 3'-0" | 1.93' | 15 1/2" | 12" | 2,510 |
| 24" | 3" | 5 1/8" | 12" | 3'-7" | 2'-8" | 6'-3" | 4'-0" | 2.48' | 16 1/8" | 14" | 3,740 |
| 30" | 3 1/2" | 6 3/8" | 15" | 4'-5" | 1'-10" | 6'-3" | 5'-0" | 3.05' | 18 1/2" | 15" | 4,930 |
| 36" | 4" | 7 1/8" | 17" | 5'-2" | 3'-1" | 8'-3" | 6'-0" | 3.75' | 24 1/8" | 20" | 6,800 |

THIS DRAWING IS THE PROPERTY OF INFRASTRUCTURE PRECAST, INC. ANY USE OR DUPLICATION OF THIS DRAWING WITHOUT PRIOR AUTHORIZATION IS STRICTLY PROHIBITED.