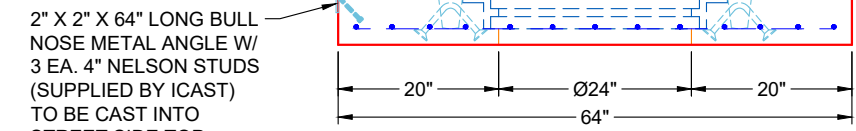


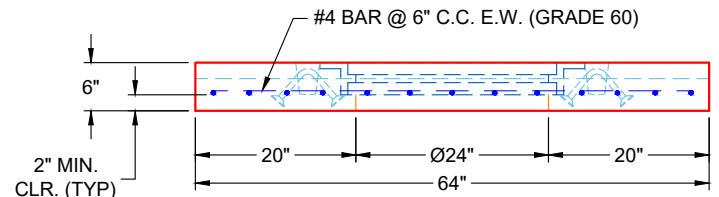
**PLAN VIEW  
(RIGHT SIDE UP)**

**GENERAL NOTES:**


1. MANUFACTURED PER ASTM C-913 LATEST REVISION)
2. CONCRETE: 4,500 PSI AT 28 DAYS
3. REINFORCEMENT: #4 BAR @ 6" C.C. E.W. (GRADE 60) - 2" MIN. REBAR CLEARANCE (TYP)
4. JOINT SEALED WITH CONCRETE SEALANTS CS-102 - MEETS ASTM C-990 SPECIFICATIONS (SUPPLIED BY ICAST)
5. HOE MCS-288 FRAME & COVER "STORM" SUPPLIED BY ICAST - FRAME TO BE CAST INTO TOP SLAB FLANGE SIDE UP
6. WEIGHT: 1,905 LBS
7. 2" X 2" X 64" LONG BULL NOSE METAL ANGLE W/ 3 EA. 4" NELSON STUDS (SUPPLIED BY ICAST) TO BE CAST INTO STREET SIDE TOP EDGE OF TOP SLAB
8. LIFTERS: 2 EA. 6CA18 CONAC A-ANCHORS FOR PLANT & FIELD HANDLING
9. TOP SURFACE TO RECEIVE LIGHT BRUSH FINISH



**FRONT VIEW  
(RIGHT SIDE UP)**



**SIDE VIEW  
(RIGHT SIDE UP)**

<b>PRODUCTION WORK ORDER</b>		PRODUCT I.D.: BX048048-08LD06S	DESCRIPTION: 64" X 64" X 6" TOP SLAB SPECIAL	
	<b>QUALITY CONTROL CHECKLIST</b>		PRODUCT VIEW: RIGHT SIDE UP	
	<input type="checkbox"/> ALL DIMENSIONS CORRECT. <input type="checkbox"/> LIFTERS INSTALLED. <input type="checkbox"/> HOLE LOCATION(S) CORRECT. <input type="checkbox"/> REINFORCING & SPACING CORRECT. <input type="checkbox"/> CASTING LOCATION & ORIENTATION CORRECT. <input type="checkbox"/> EDGES CHAMFERED. <input type="checkbox"/> SHIPLAP JOINT INSTALLED.		CUSTOMER: CONVERGENT WATER TECHNOLOGIES	
			PLANT: BEAVER DAM, KY	
			PROJECT: SANDERS SUPPLY PRETX CURB UNITS	
			WEIGHT: 1,905 LBS	
			STRUCTURE: 54747 (2) 2	
		TOP SECTION JOINT: FLAT		
		ORDER NO: 25-4747		
		BASE SECTION JOINT: N / A		
		PE: J.H. ROSS		
		DRAWING: K. CARDWELL		
		QC CHECK INITIALS:		
		DATE: 12/23/25		
		SCALE: NTS		
		PG. 1 OF 1		

**Job Number:**

25-4747

**Job Name:**

Sanders Supply Pretx Curb Units

**Structure:**

54747 (2) 2

**Note:**

HOE MCS-288 Frame Supplied By  
iCast To Be Cast Into Top Slab  
Flange Side Up