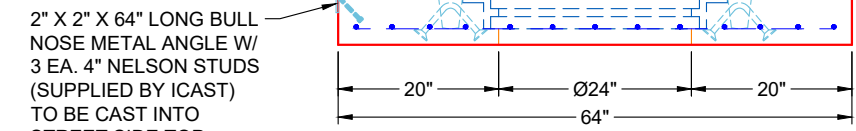


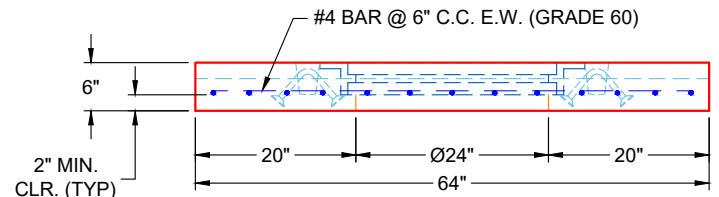
**PLAN VIEW
(RIGHT SIDE UP)**

GENERAL NOTES:


1. MANUFACTURED PER ASTM C-913 LATEST REVISION)
2. CONCRETE: 4,500 PSI AT 28 DAYS
3. REINFORCEMENT: #4 BAR @ 6" C.C. E.W. (GRADE 60) - 2" MIN. REBAR CLEARANCE (TYP)
4. JOINT SEALED WITH CONCRETE SEALANTS CS-102 - MEETS ASTM C-990 SPECIFICATIONS (SUPPLIED BY ICAST)
5. HOE MCS-288 FRAME & COVER "STORM" SUPPLIED BY ICAST - FRAME TO BE CAST INTO TOP SLAB FLANGE SIDE UP
6. WEIGHT: 1,905 LBS
7. 2" X 2" X 64" LONG BULL NOSE METAL ANGLE W/ 3 EA. 4" NELSON STUDS (SUPPLIED BY ICAST) TO BE CAST INTO STREET SIDE TOP EDGE OF TOP SLAB
8. LIFTERS: 2 EA. 6CA18 CONAC A-ANCHORS FOR PLANT & FIELD HANDLING
9. TOP SURFACE TO RECEIVE LIGHT BRUSH FINISH



**FRONT VIEW
(RIGHT SIDE UP)**



**SIDE VIEW
(RIGHT SIDE UP)**

PRODUCTION WORK ORDER		PRODUCT I.D.: BX048048-08LD06S	DESCRIPTION: 64" X 64" X 6" TOP SLAB SPECIAL		
	QUALITY CONTROL CHECKLIST	PRODUCT VIEW: RIGHT SIDE UP	CUSTOMER: CONVERGENT WATER TECHNOLOGIES		
	<input type="checkbox"/> ALL DIMENSIONS CORRECT. <input type="checkbox"/> LIFTERS INSTALLED. <input type="checkbox"/> HOLE LOCATION(S) CORRECT. <input type="checkbox"/> REINFORCING & SPACING CORRECT. <input type="checkbox"/> CASTING LOCATION & ORIENTATION CORRECT. <input type="checkbox"/> EDGES CHAMFERED. <input type="checkbox"/> SHIPLAP JOINT INSTALLED.	PLANT: BEAVER DAM, KY	PROJECT: SANDERS SUPPLY PRETX CURB UNITS		
		WEIGHT: 1,905 LBS	STRUCTURE: 54747 (2) 1		
		TOP SECTION JOINT: FLAT	ORDER NO: 25-4747		
		BASE SECTION JOINT: N / A	PE: J.H. ROSS	DRAWING: K. CARDWELL	
		QC CHECK INITIALS:	DATE: 12/23/25	SCALE: NTS	PG. 1 OF 1

THIS DRAWING IS THE PROPERTY OF INFRASTRUCTURE PRECAST, INC. ANY USE OR DUPLICATION OF THIS DRAWING WITHOUT PRIOR AUTHORIZATION IS STRICTLY PROHIBITED.

Job Number:

25-4747

Job Name:

Sanders Supply Pretx Curb Units

Structure:

54747 (2) 1

Note:

HOE MCS-288 Frame Supplied By
iCast To Be Cast Into Top Slab
Flange Side Up