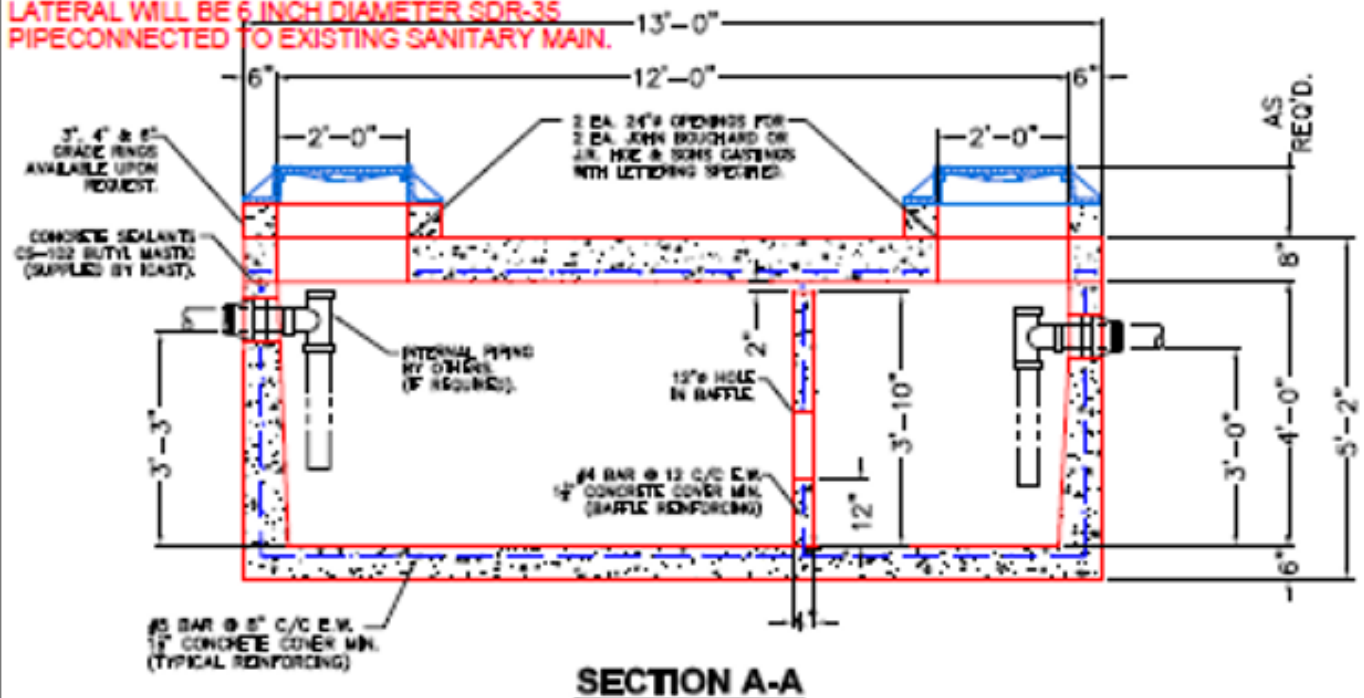


PLAN VIEW

INLET AND OUTLET PIPES WILL BE 4 INCH PVC SDR-35. OUTLET PIPE WILL CONNECT TO A 6" X 4" REDUCER AND REMAINDER OF DOWNSTREAM LATERAL WILL BE 6 INCH DIAMETER SDR-35 PIPE CONNECTED TO EXISTING SANITARY MAIN.

RFI:
 a. Please verify the pipe size & type so the booted openings can be sized properly.



- STRUCTURE NOTES:**
1. MANUFACTURED PER ASTM C-880-13 LATEST REVISION. (TRAFFIC RATED H-20 LOADING DESIGN).
 2. CONCRETE - 5,000 PSI AT 28 DAYS.
 3. REINFORCING PER ASTM A618, GRADE 60 (H-20 TRAFFIC RATED DESIGN).

WEIGHTS:
 8" TOP SLAB = 8,475 LBS.
 48" BASE W/BAFFLE = 20,925 LBS.



INFRASTRUCTURE PRECAST, INC. 991 WEST 17TH ST., BOWLING GREEN, KY, 42303 PH: (270) 369-0226, FAX: (270) 258-7424	
DRAWING DATE:	FEBRUARY 16, 2024
DRAWING NAME:	12X6GT-1500-TYP
SCALE:	NTS
CATALOG I.D.:	GT-1500
WEB ADDRESS:	WWW.INFCASTING.COM

1500 GALLON PRECAST GREASE TRAP
 12'-0" X 6'-0" X 4'-0"
 (TYPICAL)