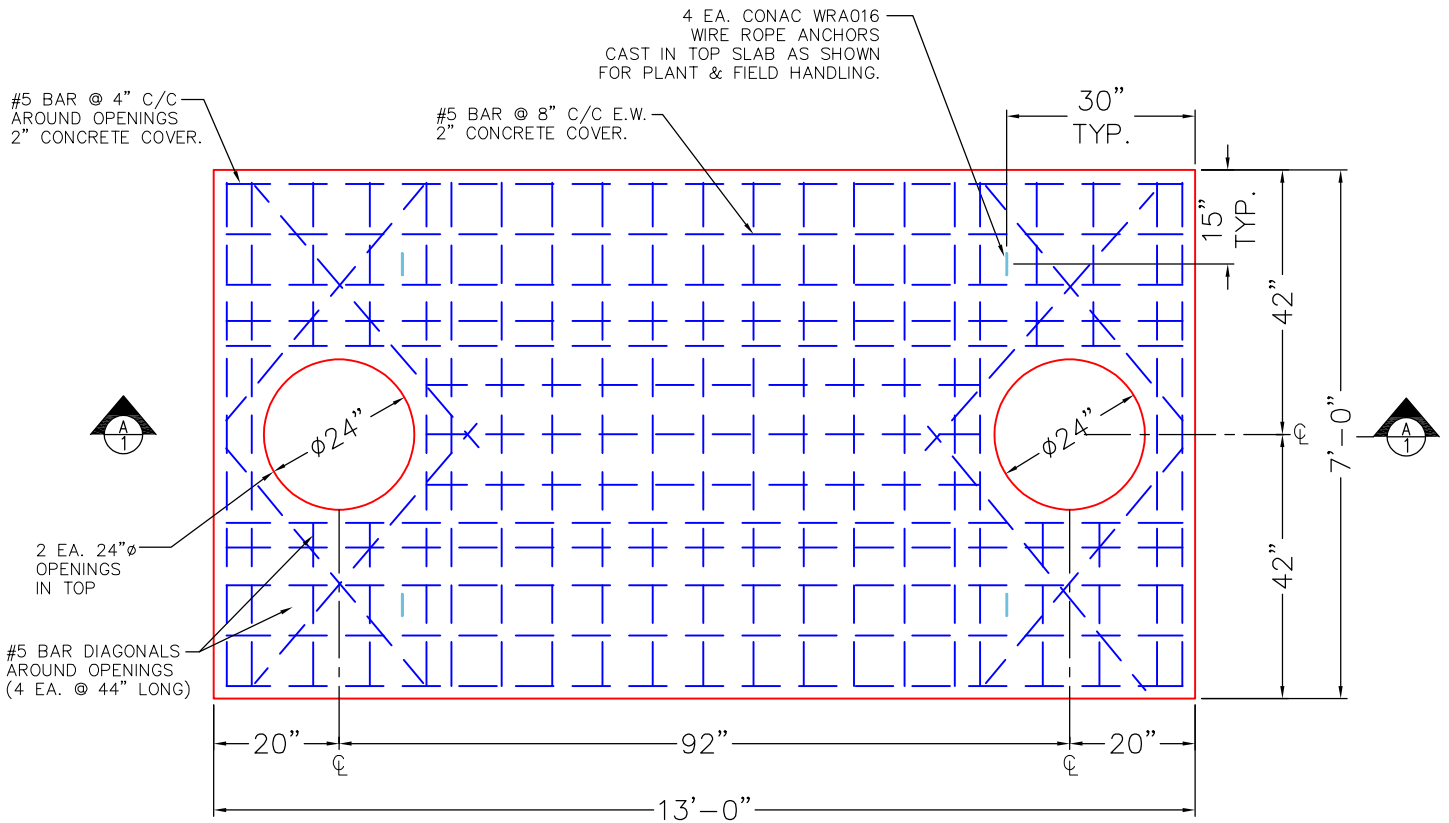
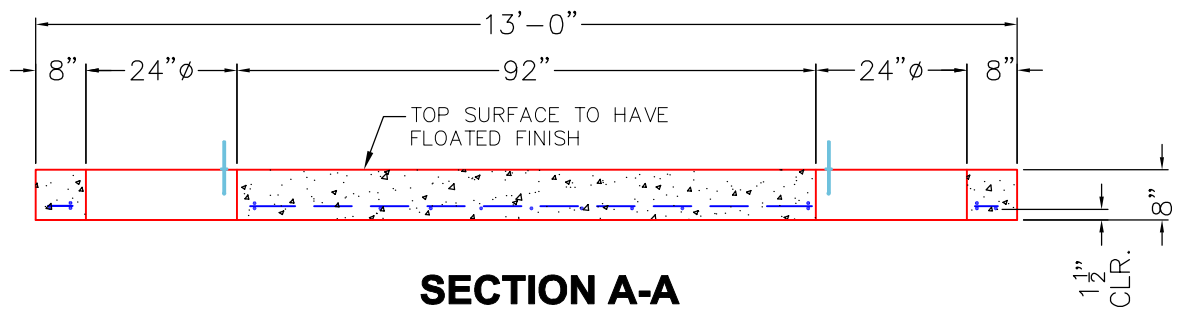


THIS DRAWING IS INTENDED TO BE PRINTED IN COLOR.



**PLAN VIEW**



**SECTION A-A**

**NOTES:**

1. PER ASTM C-890-13 LATEST REVISION.
2. CONCRETE = 5,000 PSI AT 28 DAYS.
3. REINFORCING: #5 BAR @ 8" C/C E.W. (GRADE 60).  
(H-20 TRAFFIC RATED DESIGN)
4. SEALED WITH 1" CS-102. (6 EA. 14.5' ROLLS REQ'D.)

<b>PRODUCTION WORK ORDER</b>		PRODUCT I.D.: BX072144-08LD06S	DESCRIPTION: 72in x 144in Flat Lid, Grease Trap Lid 8in Height, 6in Walls, Two 24in Opening
	QUALITY CONTROL CHECKLIST	PRODUCT VIEW: RIGHT-SIDE UP	CUSTOMER: CHANDLER PLUMBING
	<input type="checkbox"/> ALL DIMENSIONS CORRECT.	PLANT: BEAVER DAM, KY.	PROJECT: PADUCAH GREASE TRAP
	<input type="checkbox"/> LIFTERS INSTALLED.	WEIGHT: 8,475 LBS.	STRUCTURE: 54746 (2)
	<input type="checkbox"/> HOLES LOCATION(S) CORRECT.	TOP SECTION JOINT: N/A	QUOTE/SALES ORDER NO: 25-4746
	<input type="checkbox"/> REINFORCING & SPACING CORRECT.	BOTTOM OF SLAB JOINT: FLAT	PC: J.H. ROSS, PE
<input type="checkbox"/> DIAGONAL STEEL TIED IN.	QC CHECK INITIALS:	DATE: 01/20/26	DRAWING: J. HORSLEY
<input type="checkbox"/> FLAT ON BOTTOM OF SLAB.		PAGE: 1 OF 1	
<input type="checkbox"/> UNIFORM FLOATED SURFACE.			