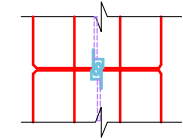
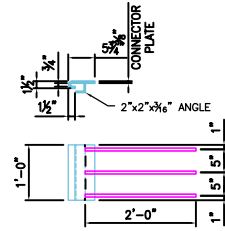


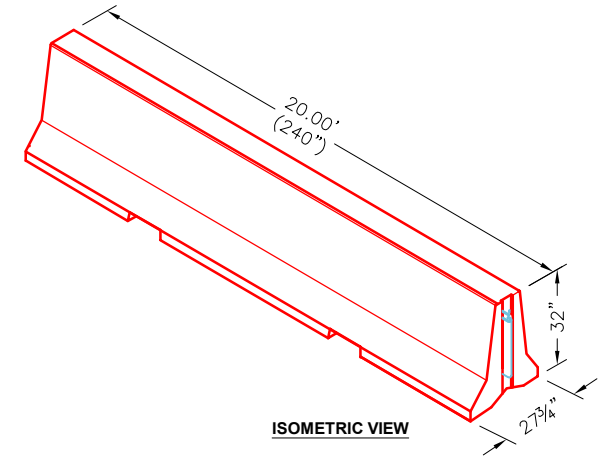
DETAIL A
(MIRRORED ON OPPOSITE END)



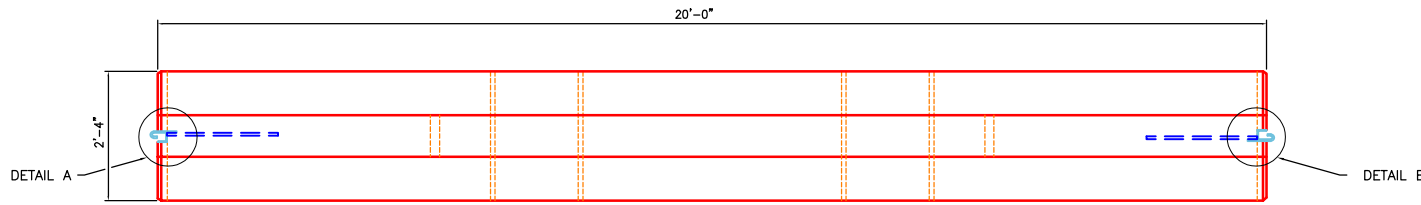
CONNECTION PLATE DETAIL



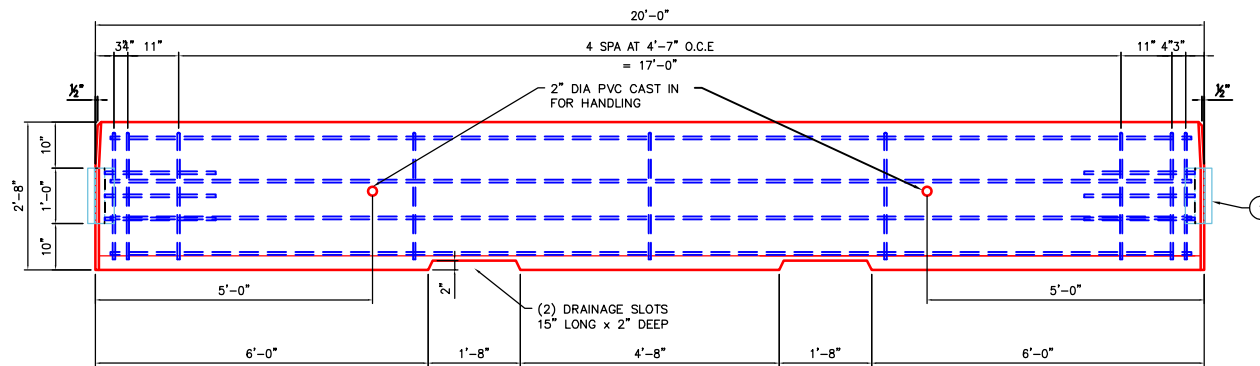
CONNECTION PLATE DETAIL



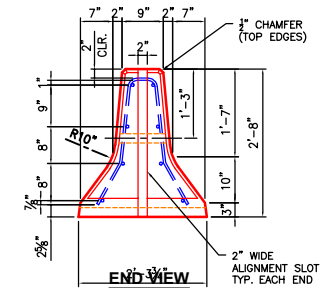
ISOMETRIC VIEW



PLAN VIEW



ELEVATION VIEW



END VIEW

GENERAL NOTES:

1. THE FOLLOWING STANDARD SPECIFICATIONS APPLY:
 - a. REINFORCING PER ASTM A-706 (GRADE 60).
 - b. STEEL: ASTM A-36 (PLAIN/MILL FINISH).
2. MINIMUM 2" CONCRETE COVER ON REINFORCING BARS.
3. CONCRETE: 4,500 PSI @ 28 DAYS WITH AIR ENTRAINMENT.
4. 3/4" CHAMFER ON ON TOP EDGES OF WALL REQUIRED.
5. WEIGHT: 9,600 LBS.

Quantity 600

INFRASTRUCTURE PRECAST, INC.

981 WEST 7TH ST, BEAVER DAM, KY. 42320
PHONE: (270) 363-2238, FAX: (270) 298-7424

KYTC 9T 20' PORTABLE
BARRIER WALL

DWG: WALL-BARRIER-KYTC-PORT-100	DATE: 12-22-25
REVIEWED BY: J.H. ROSS, PE	DRAWN BY: J. HORSLEY
WEB: WWW.ICASTINC.COM	SCALE: NTS

