

Job Name: 25-4737 - New Leadership Building  
 Job Location: Lexington, KY  
 Contractor: C&R Asphalt, LLC

Plant: 100  
 2/18/2026 10:20:14 AM

Tech: J. Horsley - A  
 PC: Trevor Lewis



**Structure ID: 85 (4)**

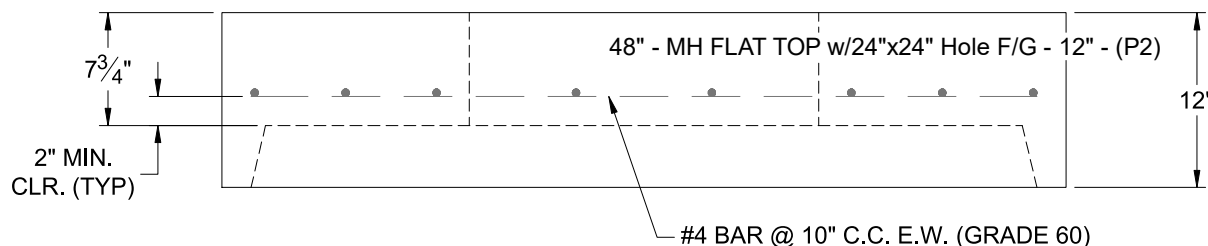
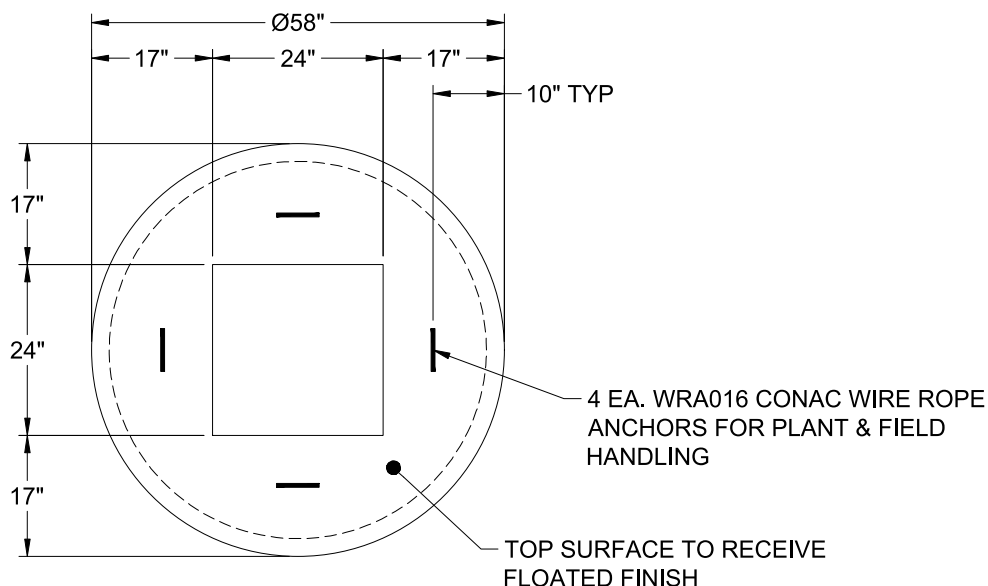
**P2 MH048LD12-24SQ**

**MH FLAT TOP w/24"x24" Hole F/G**

- P3) 24" x 24" - CASTING HEIGHT - 6"
- P2) 48" - MH FLAT TOP w/24"x24" Hole F/G - 12"
- P1) 48" - MH BASE T/n - 48"
- 1) CASTING - HOE KY-465 SET (CBI TY F)
- 1) 48" - Conseal CS-102 1.00"
- 1) 24" x 24" - Conseal CS-102 1.00"
- 2) Hole - 14
- 4) MH Step ML-10-TDS-NCR - 10"

	0 lb
	1500 lb
	4553 lb
	465 lb
	0 lb
	0 lb
	0 lb
	0 lb
Structure Total:	6518 lb

- Structure Notes:
1. PER ASTM C-478 SPECIFICATIONS
  2. CONCRETE: 4,000 PSI AT 28 DAYS
  3. REINFORCEMENT: #4 BAR @ 10" C.C. E.W. (GRADE 60) - 2" MIN. REBAR CLEARANCE (TYP)
  4. HOE KY-465 (CBI TY F) FRAME, GRATE, & CURB HOOD SUPPLIED BY ICAST
  5. LIFTERS: 4 EA. WRA016 CONAC WIRE ROPE ANCHORS FOR PLANT & FIELD HANDLING
  6. TOP SURFACE TO RECEIVE FLOATED FINISH



Coating (Int):  
 Coating (Ext):

Seam Up: Flat  
 Seam Dn: Groove

Wall Thickness: 5"

Height (Ext): 12"

Weight (Net): 1500 lb  
 Volume (Net): 0.37cu.yd