

Job Name: 25-4724 JBS Sausage Plant  
 Job Location: Perry, IA  
 Contractor: FRC Sulzer

Plant: Beaver Dam  
 3/6/2026 1:06:30 PM

Tech: S. Felletter  
 PC: T. Lewis



**Structure ID: 54724 (2)**

**P2 MH096RS60**

**MH RISER T/G**

- P6) 36" x 60" - HATCH (CAST FLUSH) - 3" 100 lb
- P5) 96" - MH FLAT TOP w/36"x60" Hatch F/G - 17" 8297 lb
- P4) 96" - MH RISER T/G - 96" 23535 lb
- P3) 96" - MH RISER T/G - 90" 22182 lb
- P2) 96" - MH RISER T/G - 60" 14947 lb
- P1) 96" - MH SEPARATE BASE-T EXT. 14" (142" OD) T/n - 12" 19580 lb
- 1) JOINT WRAP - 12" WD x 096" MAC WRAP 0 lb
- 1) HATCH (Alum.) - HALLIDAY W2S 60"x36" 116 lb
- 1) This Structure Includes a Cast-in Item 0 lb
- 1) SPECIAL Internal Coating 0 lb
- 1) SPECIAL Pre-Assembly of Ladder 0 lb
- 4) 96" - Conseal CS-231 1.00" (Double) 0 lb
- 1) 36" x 60" - Conseal CS-102 1.00" (Double) 0 lb
- 2) Z-Lok - C107-6 2 lb
- 1) PSX - 16Y NYLO 8 lb
- 1) Kor-N-Seal2 - S206-20 6 lb
- 1) Kor-N-Seal2 - S206-20 6 lb

**Structure Notes:**

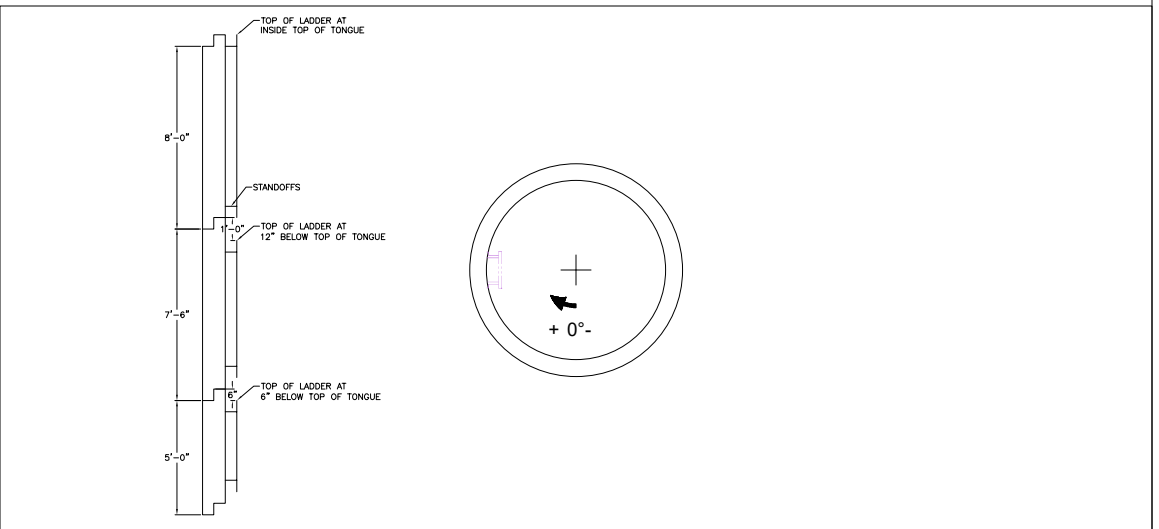
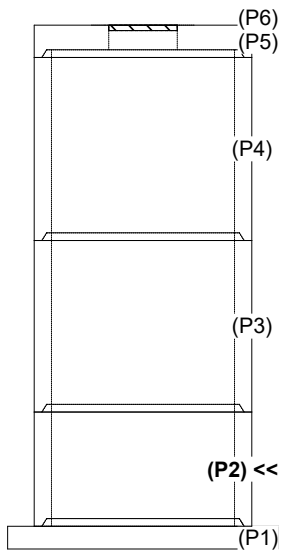
1. PER ASTM C478 SPECIFICATIONS.
2. CONCRETE = 4,500 PSI AT 28 DAYS.
3. NO STEPS / NO INVERT CHANNEL.
4. HALLIDAY HATCH W2S6036 BY ICAST.
5. ALL COMPONENTS TO HAVE INTERIOR VERSAFLEX FE100 EPOXY COATING BY ICAST.
6. AL LADDER BY ICAST, INSTALLED.

12" BASE SLAB INCLUDES A 5" SOLID TONGUE

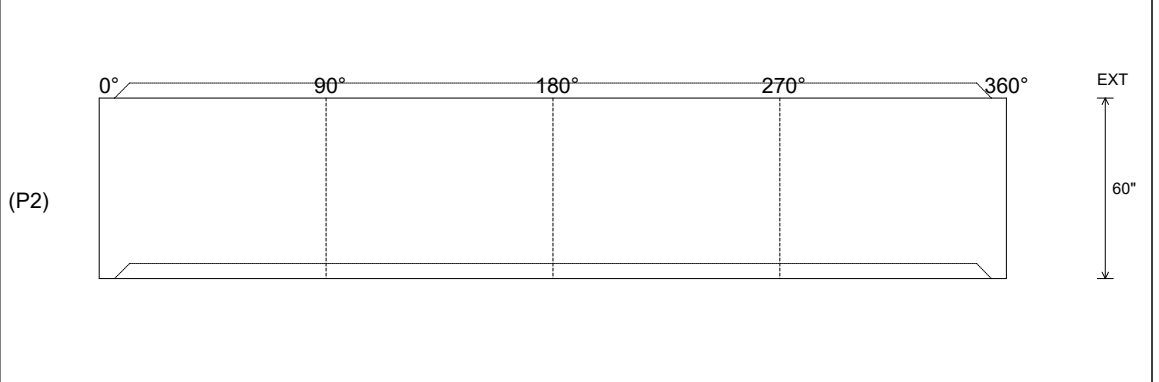
REINFORCING PER ASTM A615 (GRADE 60).  
 - TOP SLAB (As .31) #5 BARS AT 6" C.C.E.W.  
 - RISER/WALLS (As .18)  
 - FLOOR (As .37) #5 BARS AT 10" C.C.E.W.

Position	Elev	Angle	Ext. (cw)	Pipe	Pipe OD	Structure Total:	Connector	Hole	Horz Size	Up (L)	Offset
Invert 1											
Invert 2											
Invert 3											
Invert 4											
Invert 5											
Invert 6											
Invert 7											
Invert 8											

**RIGHT-SIDE UP VIEW (int. dimensions)**



**INSIDE WALL DIMENSIONS**



Coating (Int): Coating (Ext):	Seam Up: Tongue Seam Dn: Groove	Wall Thickness: 9" Floor Height: 0"	Height (Int): 60" Height (Ext): 60"
		Weight (Net): 14947 lb Volume (Net): 3.82cu.yd	