

Job Name: 25-4724 JBS Sausage Plant
 Job Location: Perry, IA
 Contractor: FRC Sulzer

Plant: Beaver Dam
 3/6/2026 1:05:59 PM

Tech: S. Felletter
 PC: T. Lewis



Structure ID: 54724 (2)

P1 MH096SB12

MH SEPARATE BASE-T EXT. 14" (142" OD) T/n

- P6) 36" x 60" - HATCH (CAST FLUSH) - 3"
- P5) 96" - MH FLAT TOP w/36"x60" Hatch F/G - 17"
- P4) 96" - MH RISER T/G - 96"
- P3) 96" - MH RISER T/G - 90"
- P2) 96" - MH RISER T/G - 60"
- P1) 96" - MH SEPARATE BASE-T EXT. 14" (142" OD) T/n - 12"
- 1) JOINT WRAP - 12" WD x 096" MAC WRAP
- 1) HATCH (Alum.) - HALLIDAY W2S 60"x36"
- 1) This Structure Includes a Cast-in Item
- 1) SPECIAL Internal Coating
- 1) SPECIAL Pre-Assembly of Ladder
- 4) 96" - Conseal CS-231 1.00" (Double)
- 1) 36" x 60" - Conseal CS-102 1.00" (Double)
- 2) Z-Lok - C107-6
- 1) PSX - 16Y NYLO
- 1) Kor-N-Seal2 - S206-20
- 1) PSX - 12M NYLO

- 100 lb
- 8297 lb
- 23535 lb
- 22182 lb
- 14947 lb
- 19580 lb
- 0 lb
- 116 lb
- 0 lb
- 0 lb
- 0 lb
- 0 lb
- 0 lb
- 0 lb
- 0 lb
- 2 lb
- 8 lb
- 6 lb
- 8 lb

Structure Notes:

1. PER ASTM C478 SPECIFICATIONS.
2. CONCRETE = 4,500 PSI AT 28 DAYS.
3. NO STEPS / NO INVERT CHANNEL.
4. HALLIDAY HATCH W2S6036 BY ICAST.
5. ALL COMPONENTS TO HAVE INTERIOR VERSAFLEX FE100 EPOXY COATING BY ICAST.
6. AL LADDER BY ICAST, INSTALLED.

12" BASE SLAB INCLUDES A 5" SOLID TONGUE

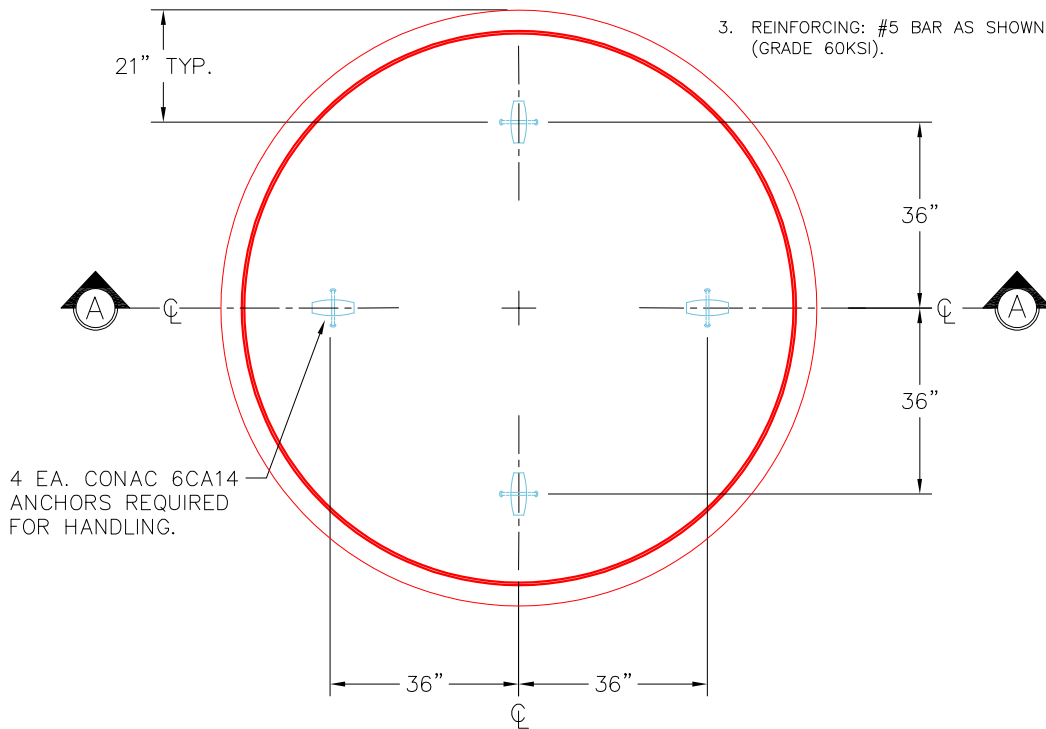
REINFORCING PER ASTM A615 (GRADE 60).

- TOP SLAB (As .31) #5 BARS AT 6" C.C.E.W.
- RISER/WALLS (As .18)
- FLOOR (As .37) #5 BARS AT 10" C.C.E.W.

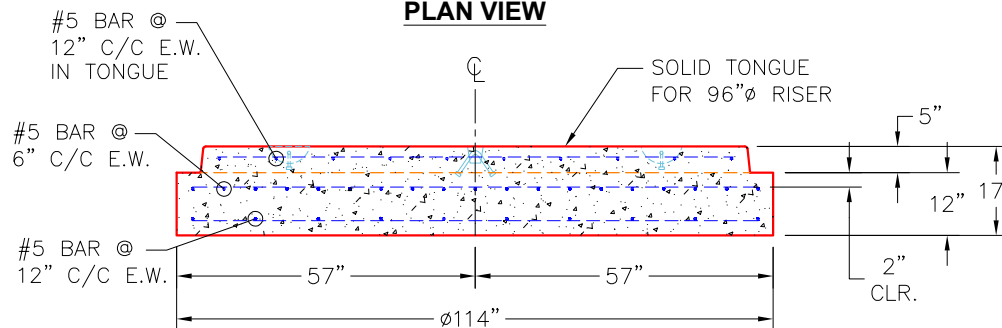
Rim: 997.88' Rim to Invert: 12.65' Slack: 0" Sump: 111.2" Step Position:

GENERAL NOTES:

1. MANUFACTURED TO ASTM C-478 (LATEST REVISION).
2. CONCRETE 4,500 PSI AT 28 DAYS.
3. REINFORCING: #5 BAR AS SHOWN (GRADE 60KSI).



PLAN VIEW



SECTION A-A

Coating (Int):
 Coating (Ext):

Seam Up: Tongue
 Seam Dn: n/a

Wall Thickness: 9"
 Floor Height: 12"

Height (Int): 0"
 Height (Ext): 0"

Weight (Net): 19580 lb
 Volume (Net): 5cu.yd