

Job Name: 25-4716 KYTC Valve Vault
 Job Location: Louisville, KY
 Contractor: Cleary Construction, Inc.

Plant: Beaver Dam
 1/16/2026 9:24:55 AM

Tech: S. Felletter
 PC: C. Goff



Structure ID: 54716 (2)

P2 BX072120-12LD08S

CB FLAT TOP 8"W w/42"X42" Hatch F/F

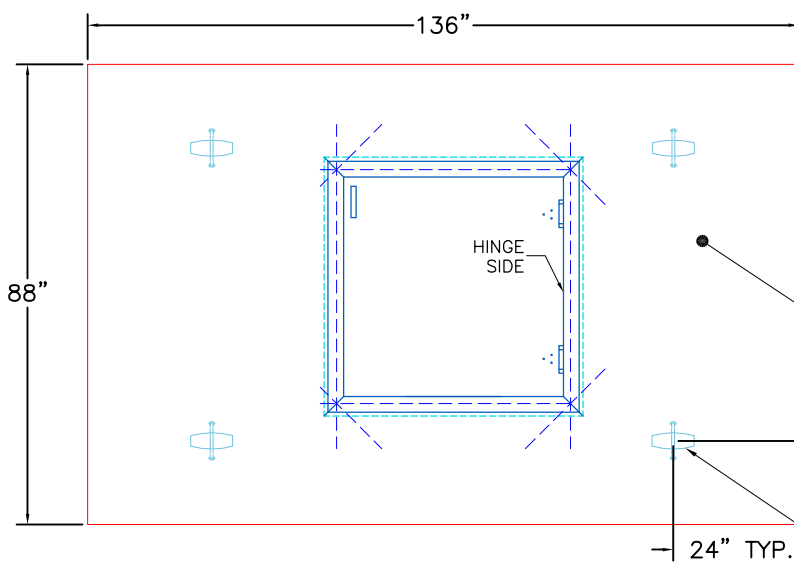
- P3) 42" x 42" - HATCH (CAST FLUSH) - 3"
- P2) 72" x 120" - CB FLAT TOP 8"W w/42"X42" Hatch F/F - 12"
- P1) 72" x 120" - BOX BASE 8inW, 8inF, Variable Ht F/n - 72"
- 1) This Structure Includes a Cast-in Item
- 1) JOINT WRAP - 0.065"x6"x50' CONSEAL CS212
- 1) JOINT WRAP PRIMER - CONSEAL CS-75 (1 gal.)
- 1) 72" x 120" - Conseal CS-102 1.00"

100 lb
 10275 lb
 28141 lb
 0 lb
 0 lb
 0 lb
 0 lb

 Structure Total: 38516 lb

Structure Notes:
 1. PER ASTM C913 SPECIFICATIONS.
 2. CONCRETE = 4,000 PSI AT 28 DAYS.
 3. NO INVERT CHANNEL.

REINFORCING PER ASTM A615 (GRADE 60).
 - TOP SLAB (As .62) #5 BARS AT 6" C.C.E.W.
 - WALLS (As .47) #5 BARS AT 8" C.C.E.W.
 - FLOOR (As .47) #5 BARS AT 8" C.C.E.W.



TOP VIEW

GENERAL NOTES:

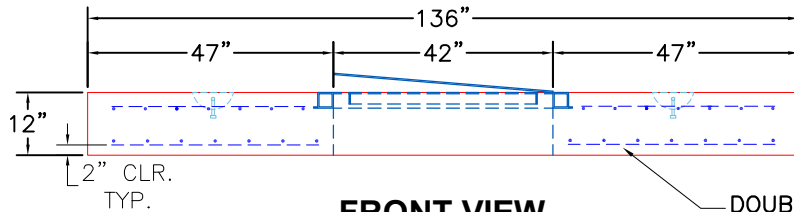
1. MANUFACTURED TO ASTM C-913 (LATEST REVISION).
2. CONCRETE: 4,000 PSI AT 28 DAYS.
3. REINFORCING: PER ASTM A615. (GRADE 60).
4. WEIGHT: 10,275 LBS
5. HATCH: HALLIDAY W1S 42" X 42" HATCH SUPPLIED BY ICAST.
6. HATCH TO BE CAST INTO TOP OF LID.
7. CS-102 JOINT SEALANT.

LIGHT BRUSH FINISH

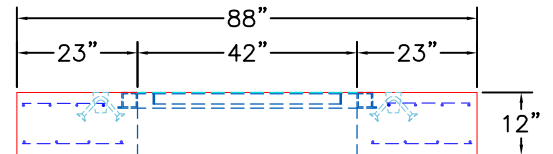
16" TYP.

24" TYP.

4 EA. CONAC 4CA14 ANCHORS CAST IN THE TOP SLAB AS SHOWN FOR PLANT & FIELD HANDLING.



FRONT VIEW



RIGHT VIEW

DOUBLE MAT OF #5 BAR @ 6" O.C.E.W

Coating (Int):
 Coating (Ext):

Seam Up: Flat
 Seam Dn: Flat

Wall Thickness: 8"

Height (Ext): 12"

Weight (Net): 10275 lb
 Volume (Net): 2.62cu.yd