

Job Name: 25-4716 KYTC Valve Vault  
 Job Location: Louisville, KY  
 Contractor: Cleary Construction, Inc.

Plant: Beaver Dam  
 1/16/2026 9:24:27 AM

Tech: S. Felletter  
 PC: C. Goff



**Structure ID: 54716 (2)**

**P1 CVBVF**

**BOX BASE 8inW, 8inF, Variable Ht F/n**

- P3) 42" x 42" - HATCH (CAST FLUSH) - 3"
- P2) 72" x 120" - CB FLAT TOP 8"W w/42"X42" Hatch F/F - 12"
- P1) 72" x 120" - BOX BASE 8inW, 8inF, Variable Ht F/n - 72"
- 1) This Structure Includes a Cast-in Item
- 1) JOINT WRAP - 0.065"x6"x50' CONSEAL CS212
- 1) JOINT WRAP PRIMER - CONSEAL CS-75 (1 gal.)
- 1) 72" x 120" - Conseal CS-102 1.00"

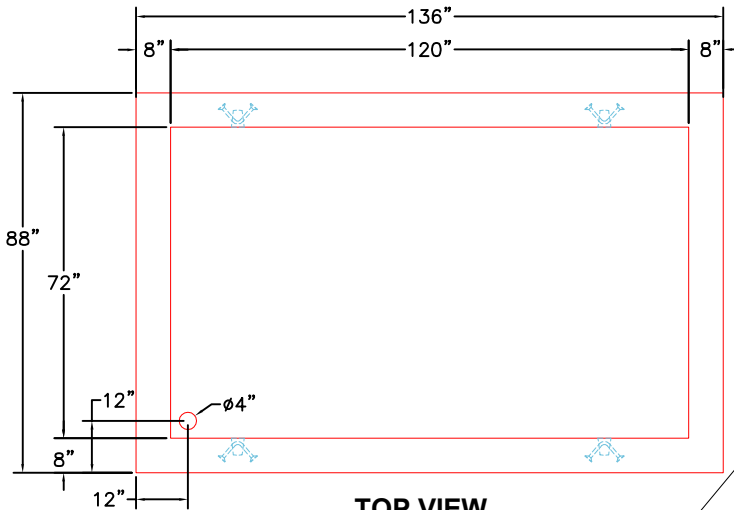
100 lb  
 10275 lb  
 28141 lb  
 0 lb  
 0 lb  
 0 lb  
 0 lb  
 -----  
 Structure Total: 38516 lb

Structure Notes:

1. PER ASTM C913 SPECIFICATIONS.
2. CONCRETE = 4,000 PSI AT 28 DAYS.
3. NO INVERT CHANNEL.

REINFORCING PER ASTM A615 (GRADE 60).  
 - TOP SLAB (As .62) #5 BARS AT 6" C.C.E.W.  
 - WALLS (As .47) #5 BARS AT 8" C.C.E.W.  
 - FLOOR (As .47) #5 BARS AT 8" C.C.E.W.

Rim: 7' Rim to Invert: 0' Slack: 0' Sump: 84" Step Position:



**TOP VIEW**

GENERAL NOTES:

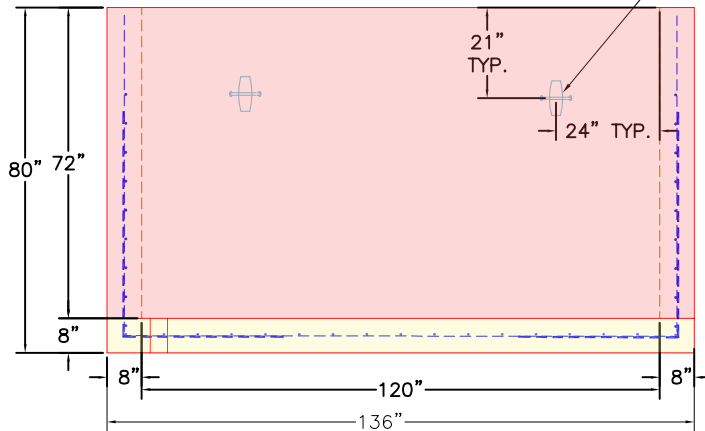
1. MANUFACTURED TO ASTM C-913 (LATEST REVISION).
2. CONCRETE: 4,000 PSI AT 28 DAYS.
3. REINFORCING: PER ASTM A615. (GRADE 60).
4. WEIGHT: 28,141 LBS
5. CS-102 JOINT SEALANT.

**FIRST POUR DRAWING**

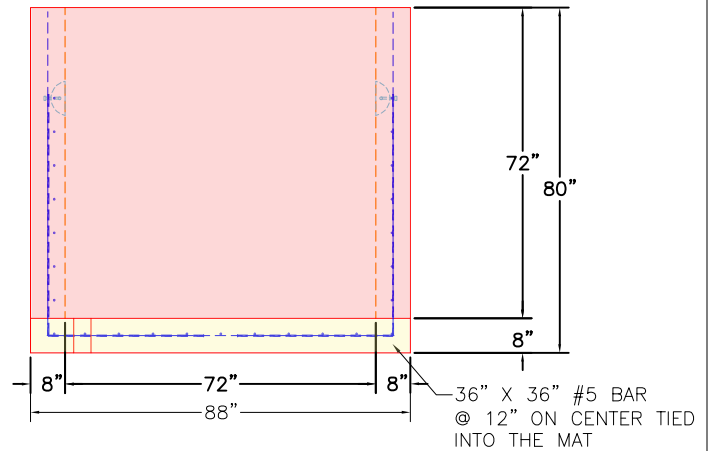
**FIRST POUR - 2,866 LBS**

**SECOND POUR - 25,275 LBS**

4 EA. CONAC 6CA18 ANCHORS  
 CAST IN THE BASE SECTION AS  
 SHOWN FOR PLANT & FIELD  
 HANDLING.



**FRONT VIEW**



**RIGHT VIEW**

Coating (Int):  
 Coating (Ext):

Seam Up: Flat  
 Seam Dn: n/a

Wall Thickness: 8"  
 Floor Height: 8"

Height (Int): 72"  
 Height (Ext): 80"

Weight (Net): 28141 lb  
 Volume (Net): 7.19cu.yd

Job Name: 25-4716 KYTC Valve Vault  
 Job Location: Louisville, KY  
 Contractor: Cleary Construction, Inc.

Plant: Beaver Dam  
 1/16/2026 9:24:27 AM

Tech: S. Felletter  
 PC: C. Goff



**Structure ID: 54716 (2)**

**P1 CVBVF**

**BOX BASE 8inW, 8inF, Variable Ht F/n**

- P3) 42" x 42" - HATCH (CAST FLUSH) - 3"
- P2) 72" x 120" - CB FLAT TOP 8"W w/42"X42" Hatch F/F - 12"
- P1) 72" x 120" - BOX BASE 8inW, 8inF, Variable Ht F/n - 72"
- 1) This Structure Includes a Cast-in Item
- 1) JOINT WRAP - 0.065"x6"x50' CONSEAL CS212
- 1) JOINT WRAP PRIMER - CONSEAL CS-75 (1 gal.)
- 1) 72" x 120" - Conseal CS-102 1.00"

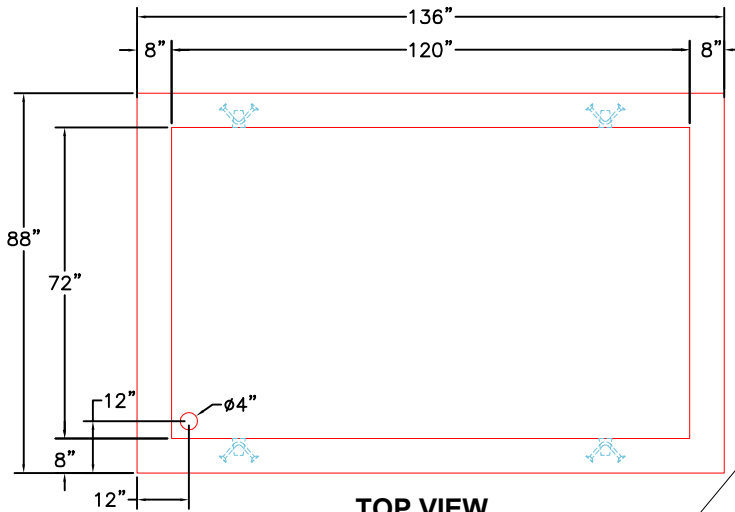
100 lb  
 10275 lb  
 28141 lb  
 0 lb  
 0 lb  
 0 lb  
 0 lb  
 -----  
 Structure Total: 38516 lb

Structure Notes:

1. PER ASTM C913 SPECIFICATIONS.
2. CONCRETE = 4,000 PSI AT 28 DAYS.
3. NO INVERT CHANNEL.

REINFORCING PER ASTM A615 (GRADE 60).  
 - TOP SLAB (As .62) #5 BARS AT 6" C.C.E.W.  
 - WALLS (As .47) #5 BARS AT 8" C.C.E.W.  
 - FLOOR (As .47) #5 BARS AT 8" C.C.E.W.

Rim: 7'      Rim to Invert: 0'      Slack: 0"      Sump: 84"      Step Position:



**TOP VIEW**

**GENERAL NOTES:**

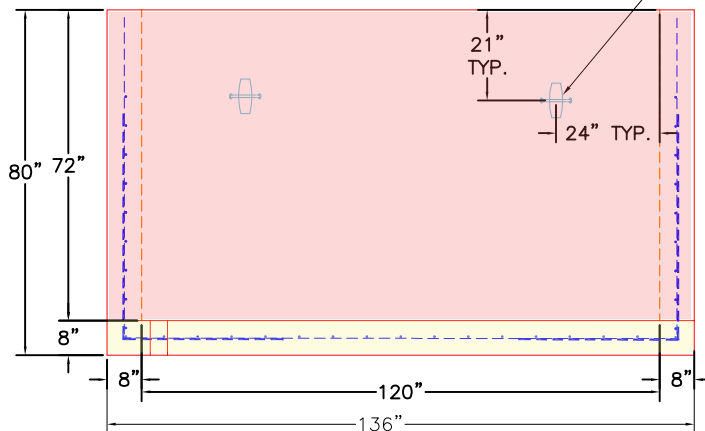
1. MANUFACTURED TO ASTM C-913 (LATEST REVISION).
2. CONCRETE: 4,000 PSI AT 28 DAYS.
3. REINFORCING: PER ASTM A615. (GRADE 60).
4. WEIGHT: 28,141 LBS
5. CS-102 JOINT SEALANT.

**SECOND POUR DRAWING**

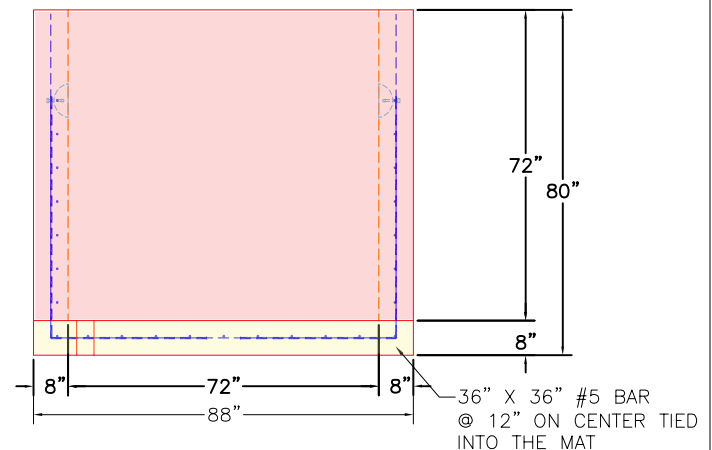
**FIRST POUR - 2,866 LBS**

**SECOND POUR - 25,275 LBS**

4 EA. CONAC 6CA18 ANCHORS  
 CAST IN THE BASE SECTION AS  
 SHOWN FOR PLANT & FIELD  
 HANDLING.



**FRONT VIEW**



**RIGHT VIEW**

Coating (Int):  
 Coating (Ext):

Seam Up: Flat  
 Seam Dn: n/a

Wall Thickness: 8"  
 Floor Height: 8"

Height (Int): 72"  
 Height (Ext): 80"

Weight (Net): 28141 lb  
 Volume (Net): 7.19cu.yd