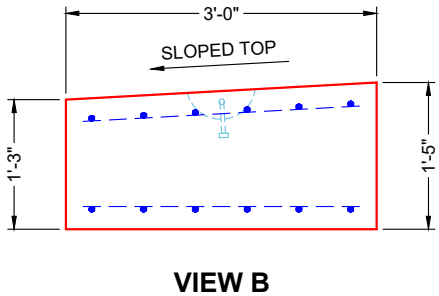
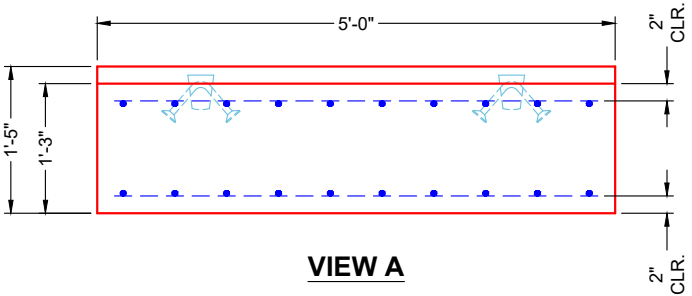
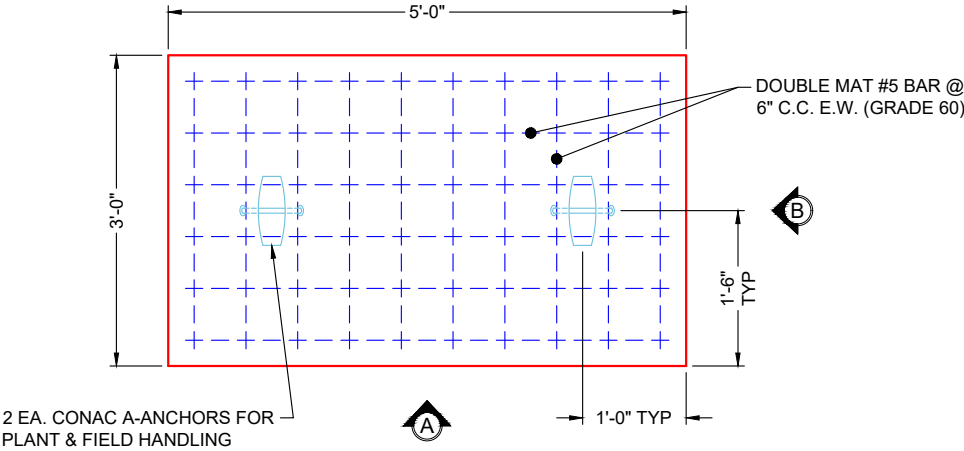


GENERAL NOTES

- 1. MANUFACTURED PER ASTM C-913 SPECIFICATIONS
- 2. CONCRETE: 4,000 PSI AT 28 DAYS
- 3. REINFORCEMENT: PER ASTM A615 (GRADE 60)
- DOUBLE MAT #5 BAR @ 6" C.C. E.W.
- 4. WEIGHT: 2,900 LBS
- 5. SOLID TOP - NO CASTING



REVISION INFORMATION

REV. DATE:	NO REVISIONS TO DATE



SUBMITTAL DRAWING: SLOPED TOP SLAB (36" X 60" X 17" OD)		
CUSTOMER: HARDIN COUNTY WATER DISTRICT 1		
PROJECT: PRECAST INLET TOP SLAB		
STRUCTURE: 54699 (2)		
QUOTE/SALES ORDER NO: 25-4699		
CHECKED BY: B. SMITH	DRAWN BY: K. CARDWELL	
DATE: 12/22/25	SCALE: NTS	PG. 1 OF 1

THIS DRAWING IS THE PROPERTY OF INFRASTRUCTURE PRECAST, INC. ANY USE OR DUPLICATION OF THIS DRAWING WITHOUT PRIOR AUTHORIZATION IS STRICTLY PROHIBITED.