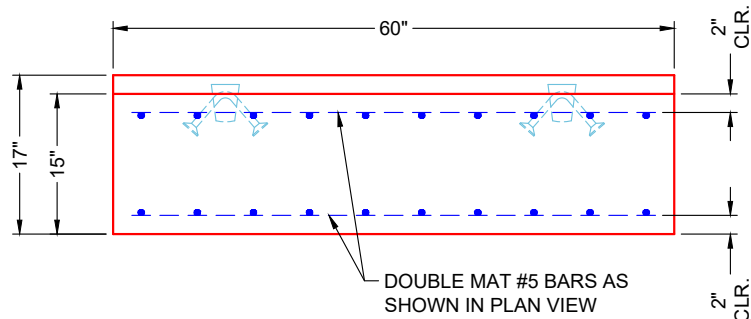
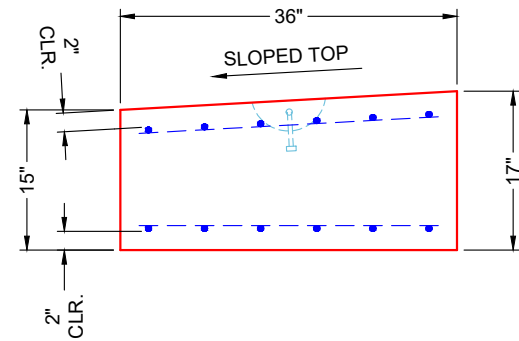


**PLAN VIEW**



**VIEW A**



**VIEW B**

**GENERAL NOTES**

1. MANUFACTURED PER ASTM C-913 SPECIFICATIONS
2. CONCRETE: 4,000 PSI AT 28 DAYS
3. REINFORCEMENT: DOUBLE MAT #5 BAR @ 6" C.C. E.W. (GRADE 60) - 2" MIN. REBAR CLEARANCE (TYP)
4. WEIGHT: 2,900 LBS
5. SOLID TOP - NO CASTING

**REINFORCEMENT CUT LIST**

BAR	QTY	MATERIAL	LENGTH	SHAPE
R1	12	#5 BAR	56"	STRAIGHT
R2	20	#5 BAR	32"	STRAIGHT

**PRODUCTION WORK ORDER**

PRODUCT I.D.: CTS

DESCRIPTION: SLOPED TOP SLAB (36" X 60" X 17" OD)



**QUALITY CONTROL CHECKLIST**

- ALL DIMENSIONS CORRECT.
- LIFTERS INSTALLED.
- STEPPED HF CORRECT SIZE.
- REINFORCING CORRECT.
- SURFACE QUALITY ACCEPTABLE.
- EDGES CHAMFERED.
- ALL PATCHWORK ACCEPTABLE.

PRODUCT VIEW: RIGHT SIDE UP

CUSTOMER: HARDIN COUNTY WATER DISTRICT 1

PLANT: BEAVER DAM, KY

PROJECT: PRECAST INLET TOP SLAB

WEIGHT: 2,900 LBS

STRUCTURE: 54699 (2)

TOP SECTION JOINT: N / A

ORDER NO: 25-4699

BASE SECTION JOINT: FLAT

PE: J.H. ROSS

DRAWING: K. CARDWELL

QC CHECK INITIALS:

DATE: 12/22/25

SCALE: NTS

PG. 1 OF 1