

Job Name: 25-4692 - 855187 Discount Tire  
 Job Location: Hermitage, TN  
 Contractor: Contech Engineering Solutions

Plant: Beaver Dam

Tech: J. Coppage

12/15/2025 12:45:32 PM

PC: T. Sekula



**Structure ID: 15-KFPD0406**

**P2 CTS**

**BX FLAT LID 6inW SPECIAL**

- P3) 24" - CASTING HEIGHT - 4"
- P2) 48" x 72" - BX FLAT LID 6inW SPECIAL - 7.25"
- P1) 48" x 72" - BOX BASE 6inW, 8inF, Variable Ht - 54"
- 1) CVSTENCILING
- 1) ASSEMBLY REQUIRED
- 2) Hole - 20

Structure Total:

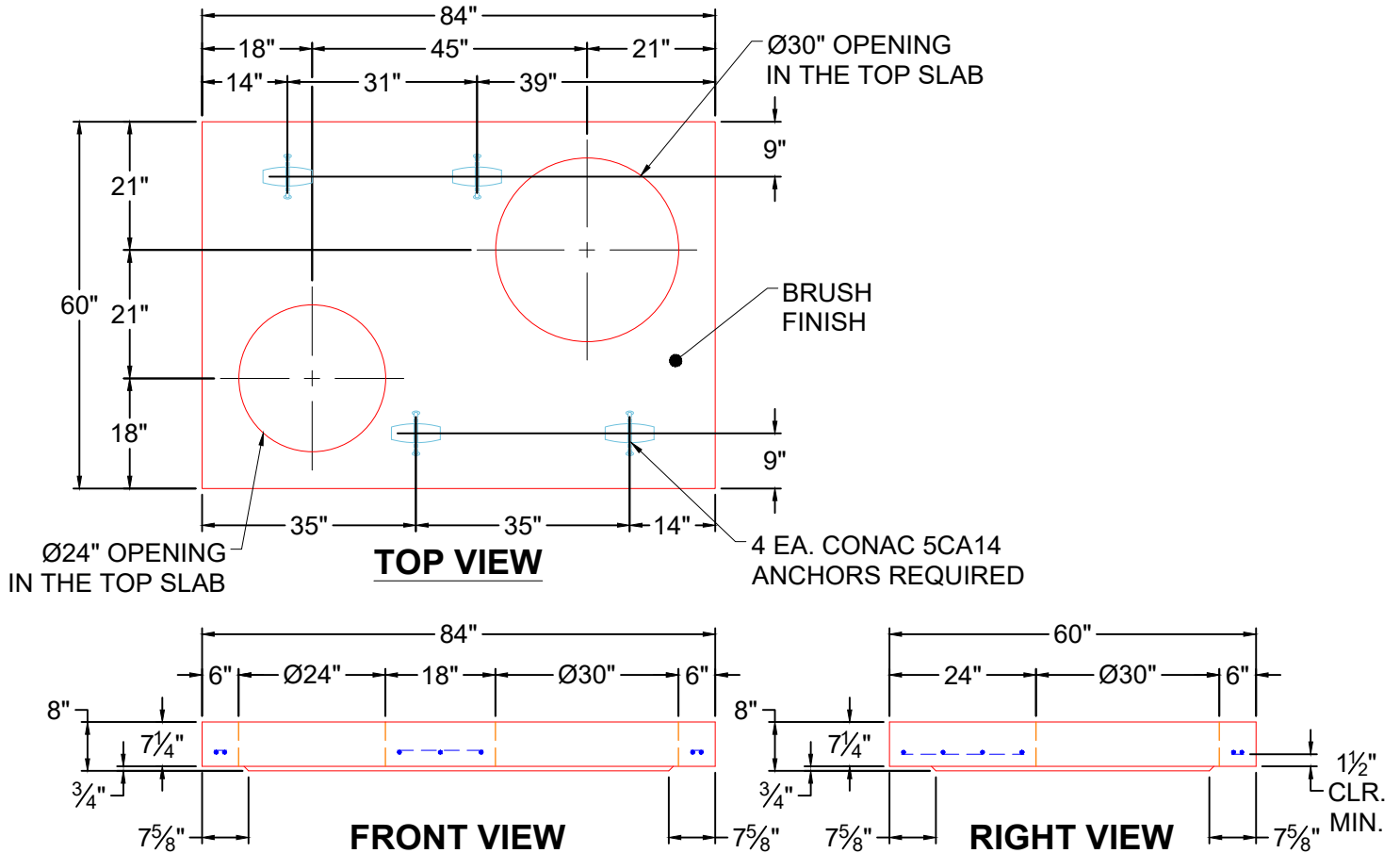
0 lb  
 2494 lb  
 10244 lb  
 0 lb  
 0 lb  
 0 lb  
 -----  
 12738 lb

**Structure Notes:**

1. DESIGN LOADING AASHTO HS-20
2. DESIGN SPECIFICATION - ACI 318-14
3. JOINT SEALANT SHALL CONFORM TO ASTM C-443
4. CONCRETE: 5,000 PSI AT 28 DAYS.
5. REINFORCING PER ASTM A615 (GRADE 60)
6. (4" TALL CASTINGS PROVIDED BY OTHERS)
7. ICAST TO INSTALL THE INTERNALS.
8. CONTECH'S LOGO AS WELL AS ANY INLETS AND OUTLETS MUST BE STENCILED ONTO THE STRUCTURE.

**GENERAL NOTES:**

1. MANUFACTURED TO ASTM C-913 (LATEST REVISION).
2. CONCRETE: 5,000 PSI AT 28 DAYS. CONCRETE.
3. REINFORCING: USE REINFORCEMENT INFORMATION PROVIDED BY CONTECH.  
PER ASTM A615 (GRADE 60).
4. WEIGHTS: TOTAL = 2,949 LBS
5. VAULT JOINT TO BE SEALED WITH CONCRETE SEALANTS, INC. CS-102 ROLL BUTYL MASTIC. (SUPPLIED BY ICAST)
6. STRUCTURE TO HAVE INTERNALS INSTALLED BY ICAST.



Coating (Int):  
 Coating (Ext):

Seam Up: Flat  
 Seam Dn: Flat

Wall Thickness: 6"

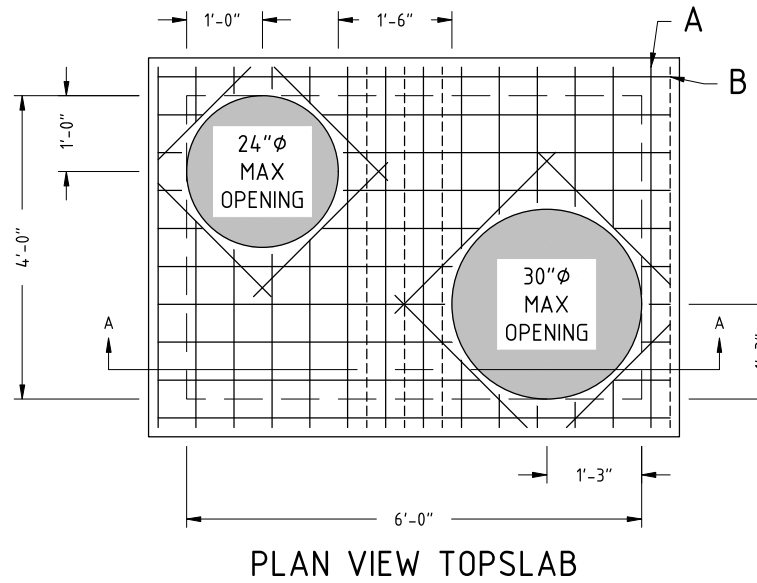
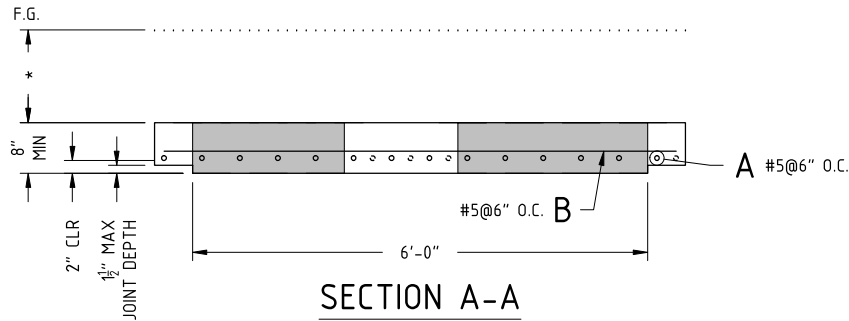
Height (Ext): 7.25"

Weight (Net): 2494 lb  
 Volume (Net): 0.64cu.yd

# 25-4692 - 855187 DISCOUNT TIRE TOP SLAB REINFORCEMENT INFORMATION 15-KFPD0406

**DESIGN NOTE:**

HS20 DIRECT TRAFFIC (HEAVY DUTY) LOADING  
 CONCRETE 28 DAY COMPRESSIVE STRENGTH - 5000 PSI  
 REINFORCEMENT STEEL - 60,000 PSI  
 REBAR MIN SPLICE LENGTHS: #3-17" #4-22" #5-28" #6-33"  
 REBAR MIN BEND DIAMETERS: #3-2.25" #4-3" #5-3.75" #6-4.5"  
 DESIGN CONFORMS TO ACI 318-14.  
 ACCESS OPENINGS MUST BE ROUND & ARE LIMITED TO "WALL THICKNESS" FROM EDGE OF SLAB.  
 AT ACCESS OPENINGS, PROVIDE ADDITIONAL REINFORCING EQUAL TO THE BARS INTERRUPTED,  
 HALF EACH SIDE OF OPENING AND PLACE 4-#4 BAR DIAGONAL AROUND OPENING(S).  
 \* DESIGNED FOR UP TO 10' OF FILL DEPTH ABOVE TOPSLAB - GREATER THAN 10' WILL  
 REQUIRE SPECIAL DESIGN.



DESIGN ENGINEER: ASHLEY JEFFREY



PROPRIETARY AND CONFIDENTIAL:  
 THE INFORMATION CONTAINED IN THIS  
 DOCUMENT IS THE SOLE PROPERTY OF  
 CONTECH. ANY REPRODUCTION IN PART  
 OR AS A WHOLE WITHOUT THE WRITTEN  
 PERMISSION OF CONTECH IS PROHIBITED.

REVISIONS		DRAWN BY: T.JG
B		PLANT:
C		SOLD BY:
D		SCALE: 1 : 20
E		ORDER#

CONTECH - HC KRAKEN - TOPSLAB	DATE: 10/29/24
4'-0" x 6'-0"	11"x17"
STANDARD REINFORCEMENT	PAGE 1 OF 1