

Job Name: 25-4692 - 855187 Discount Tire
 Job Location: Hermitage, TN
 Contractor: Contech Engineering Solutions

Plant: Beaver Dam

Tech: J. Coppage

12/15/2025 12:45:17 PM

PC: T. Sekula



Structure ID: 15-KFPD0406

P1 BX048072-06W08FBAVF

BOX BASE 6inW, 8inF, Variable Ht

- P3) 24" - CASTING HEIGHT - 4"
- P2) 48" x 72" - BX FLAT LID 6inW SPECIAL - 7.25"
- P1) 48" x 72" - BOX BASE 6inW, 8inF, Variable Ht - 54"
- 1) CVSTENCILING
- 1) ASSEMBLY REQUIRED
- 2) Hole - 20

0 lb
 2494 lb
 10244 lb
 0 lb
 0 lb
 0 lb

 Structure Total: 12738 lb

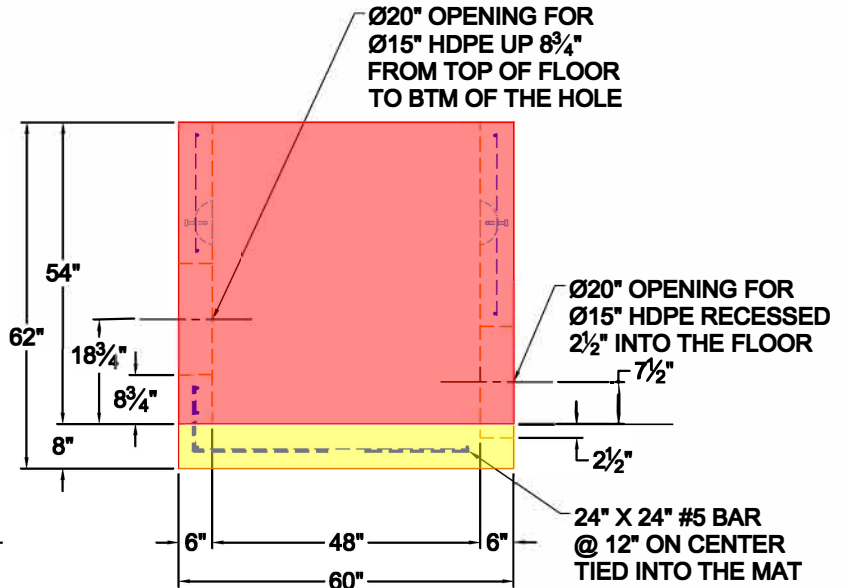
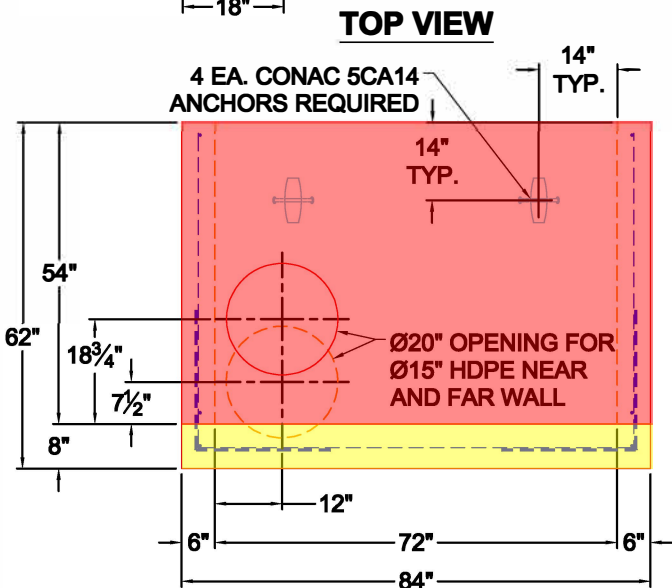
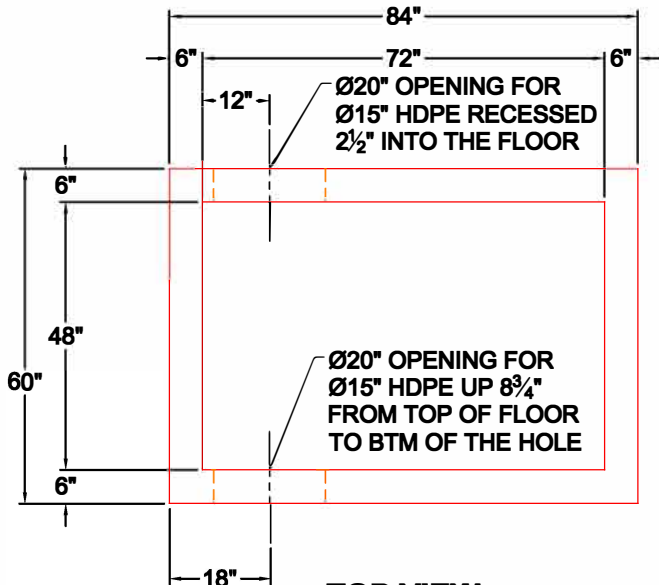
- Structure Notes:**
1. DESIGN LOADING AASHTO HS-20
 2. DESIGN SPECIFICATION - ACI 318-14
 3. JOINT SEALANT SHALL CONFORM TO ASTM C-443
 4. CONCRETE: 5,000 PSI AT 28 DAYS.
 5. REINFORCING PER ASTM A615 (GRADE 60)
 6. (4" TALL CASTINGS PROVIDED BY OTHERS)
 7. ICAST TO INSTALL THE INTERNALS.
 8. CONTECH'S LOGO AS WELL AS ANY INLETS AND OUTLETS MUST BE STENCILED ONTO THE STRUCTURE.

Rim: 446.67' Rim to Invert: 5.56' Slack: 1.47' Sump: 0' Step Position:

GENERAL NOTES:

1. MANUFACTURED TO ASTM C-913 (LATEST REVISION).
2. CONCRETE: 5,000 PSI AT 28 DAYS. CONCRETE.
3. REINFORCING: USE REINFORCEMENT INFORMATION PROVIDED BY CONTECH. PER ASTM A615 (GRADE 60).
4. WEIGHTS:
 FIRST POUR = 3,383 LBS
 SECOND POUR = 6,861 LBS
 TOTAL = 10,244 LBS
5. VAULT JOINT TO BE SEALED WITH CONCRETE SEALANTS, INC. CS-102 ROLL BUTYL MASTIC. (SUPPLIED BY ICAST)
6. STRUCTURE TO HAVE INTERNALS INSTALLED BY ICAST.

FIRST POUR DRAWING



Coating (Int):
 Coating (Ext):

Seam Up: Flat
 Seam Dn: n/a

Wall Thickness: 6"
 Floor Height: 8"

Height (Int): 54"
 Height (Ext): 62"

Weight (Net): 10244 lb
 Volume (Net): 2.62cu.yd

Job Name: 25-4692 - 855187 Discount Tire
 Job Location: Hermitage, TN
 Contractor: Contech Engineering Solutions

Plant: Beaver Dam

Tech: J. Coppage

12/15/2025 12:45:17 PM

PC: T. Sekula



Structure ID: 15-KFPD0406

P1 BX048072-06W08FBAVF

BOX BASE 6inW, 8inF, Variable Ht

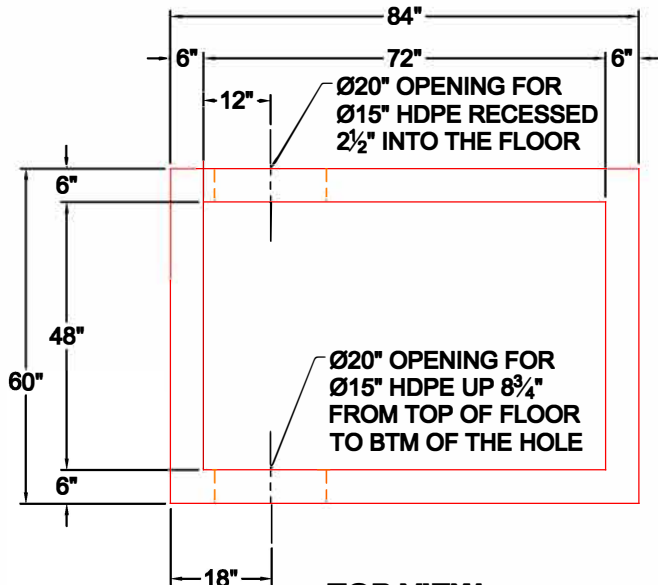
- P3) 24" - CASTING HEIGHT - 4"
- P2) 48" x 72" - BX FLAT LID 6inW SPECIAL - 7.25"
- P1) 48" x 72" - BOX BASE 6inW, 8inF, Variable Ht - 54"
- 1) CVSTENCILING
- 1) ASSEMBLY REQUIRED
- 2) Hole - 20

Structure Total: 12738 lb

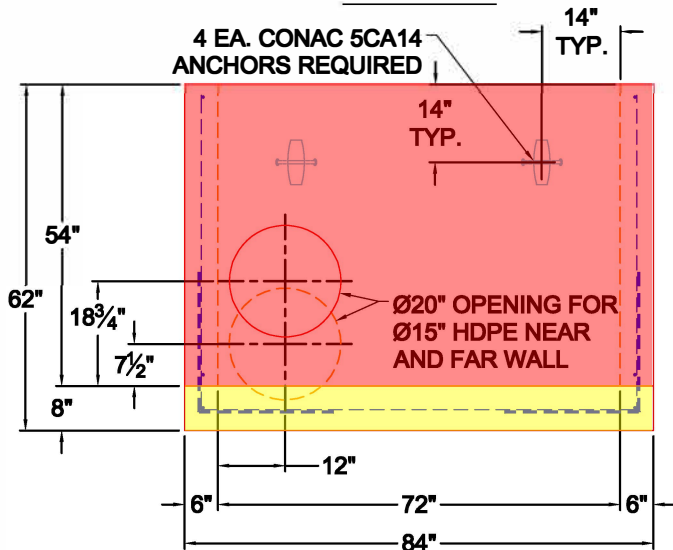
Structure Notes:

1. DESIGN LOADING AASHTO HS-20
2. DESIGN SPECIFICATION - ACI 318-14
3. JOINT SEALANT SHALL CONFORM TO ASTM C-443
4. CONCRETE: 5,000 PSI AT 28 DAYS.
5. REINFORCING PER ASTM A615 (GRADE 60)
6. (4" TALL CASTINGS PROVIDED BY OTHERS)
7. ICAST TO INSTALL THE INTERNALS.
8. CONTECH'S LOGO AS WELL AS ANY INLETS AND OUTLETS MUST BE STENCILED ONTO THE STRUCTURE.

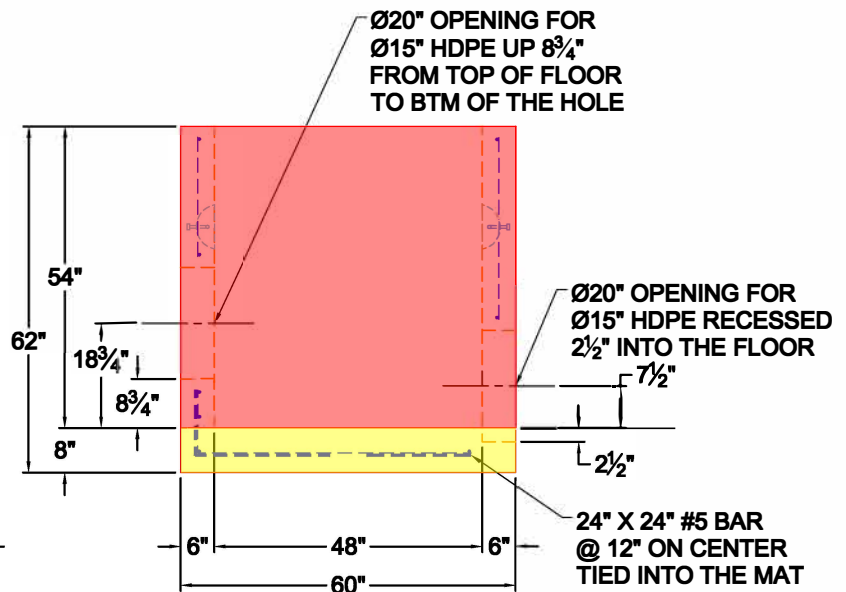
Rim: 446.67' Rim to Invert: 5.56' Slack: 1.47' Sump: 0" Step Position:



TOP VIEW



FRONT VIEW



RIGHT VIEW

GENERAL NOTES:

1. MANUFACTURED TO ASTM C-913 (LATEST REVISION).
2. CONCRETE: 5,000 PSI AT 28 DAYS. CONCRETE.
3. REINFORCING: USE REINFORCEMENT INFORMATION PROVIDED BY CONTECH. PER ASTM A615 (GRADE 60).
4. WEIGHTS:
 FIRST POUR = 3,383 LBS
 SECOND POUR = 6,861 LBS
 TOTAL = 10,244 LBS
5. VAULT JOINT TO BE SEALED WITH CONCRETE SEALANTS, INC. CS-102 ROLL BUTYL MASTIC. (SUPPLIED BY ICAST)
6. STRUCTURE TO HAVE INTERNALS INSTALLED BY ICAST.

SECOND POUR DRAWING

Coating (Int):
 Coating (Ext):

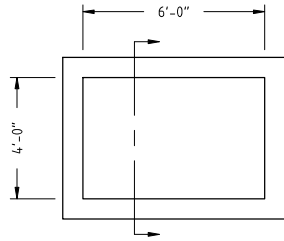
Seam Up: Flat
 Seam Dn: n/a

Wall Thickness: 6"
 Floor Height: 8"

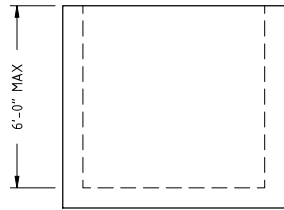
Height (Int): 54"
 Height (Ext): 62"

Weight (Net): 10244 lb
 Volume (Net): 2.62cu.yd

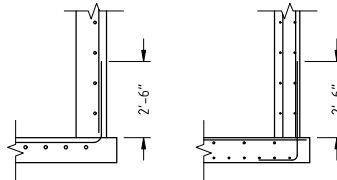
25-4692 - 855187 DISCOUNT TIRE BASE REINFORCEMENT INFORMATION 15-KFPD0406



PLAN VIEW



ELEVATION VIEW

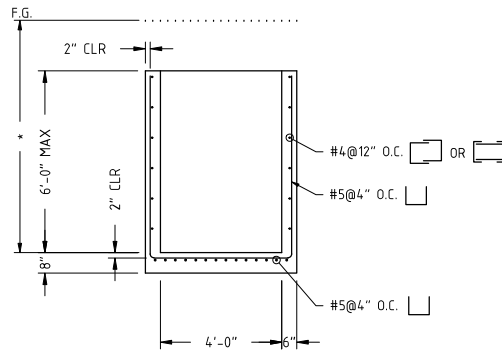


ALTERNATE BASE DETAIL

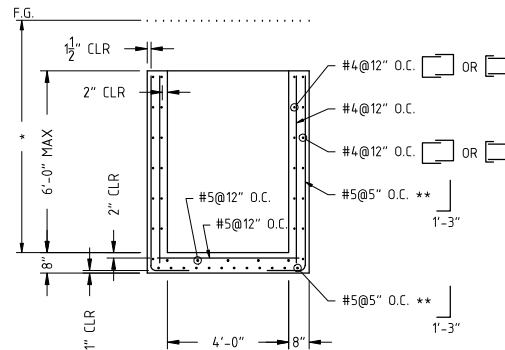
DESIGN NOTE:

HS20 DIRECT TRAFFIC (HEAVY DUTY) LOADING
 CONCRETE 28 DAY COMPRESSIVE STRENGTH - 5000 PSI
 REINFORCEMENT STEEL - 60,000 PSI
 REBAR MIN SPLICE LENGTHS: #3-17" #4-22" #5-28" #6-33"
 REBAR MIN BEND DIAMETERS: #3-2.25" #4-3" #5-3.75" #6-4.5"
 DESIGN CONFORMS TO ACI 318-14
 PIPE OPENINGS NOT SHOWN, SIZES & LOCATIONS AS REQUIRED, PLACE 4-#4 BAR DIAGONAL AROUND OPENING(S).
 DESIGN REQUIRES 8" MIN THICK TOPSLAB BE PRESENT ABOVE BASE.
 CHART SHOWS MAXIMUM DEPTH OF FILL AT VARYING WATER TABLE LEVELS. FILL DEPTH IS MEASURED FROM FINISHED GRADE (F.G.) TO THE INSIDE FLOOR OF THE BASE.
 ** L-SHAPED BARS MAY BE REPLACED WITH U-SHAPED BARS IF DESIRED.

Water Table Level:	Finished Grade	Up to 3' Below F.G.	Up to 6' Below F.G.	Up to 9' Below F.G.	Below Inside Floor of Base	6' Tall Max (Base Wall)
* Max Fill Above Base Floor:	8.83'	10.42'	11.92'	12.67'	13.92'	Design Class 1
	11.42'	13.00'	15.17'	16.67'	16.67'	Design Class 2



CLASS 1 - SECTION VIEW



CLASS 2 - SECTION VIEW



PROPRIETARY AND CONFIDENTIAL:
 THE INFORMATION CONTAINED IN THIS DOCUMENT IS THE SOLE PROPERTY OF CONTECH. ANY REPRODUCTION IN PART OR AS A WHOLE WITHOUT THE WRITTEN PERMISSION OF CONTECH IS PROHIBITED.

REVISIONS		DRAWN BY: T.J.G
B		PLANT:
C		SOLD BY:
D		SCALE: 1 : 50
E		ORDER#

CONTECH - HC KRAKEN - FULL HEIGHT BASE		
4'-0" x 6'-0"		
STANDARD REINFORCEMENT		
DATE: 10/29/24	11"x17"	PAGE 1 OF 1