

Job Name: 25-4692 - 855187 Discount Tire
 Job Location: Hermitage, TN
 Contractor: Contech Engineering Solutions

Plant: Beaver Dam

Tech: J. Coppage

12/15/2025 12:45:32 PM

PC: T. Sekula



Structure ID: 10-KFPD0608

P2 CTS

BX FLAT LID 6inW w/SPECIAL

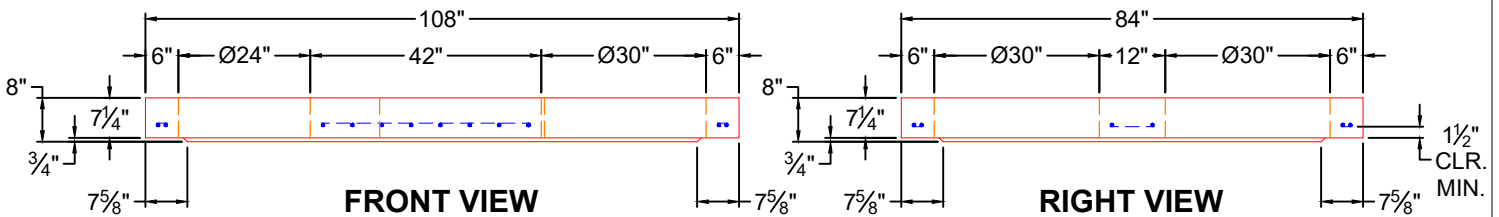
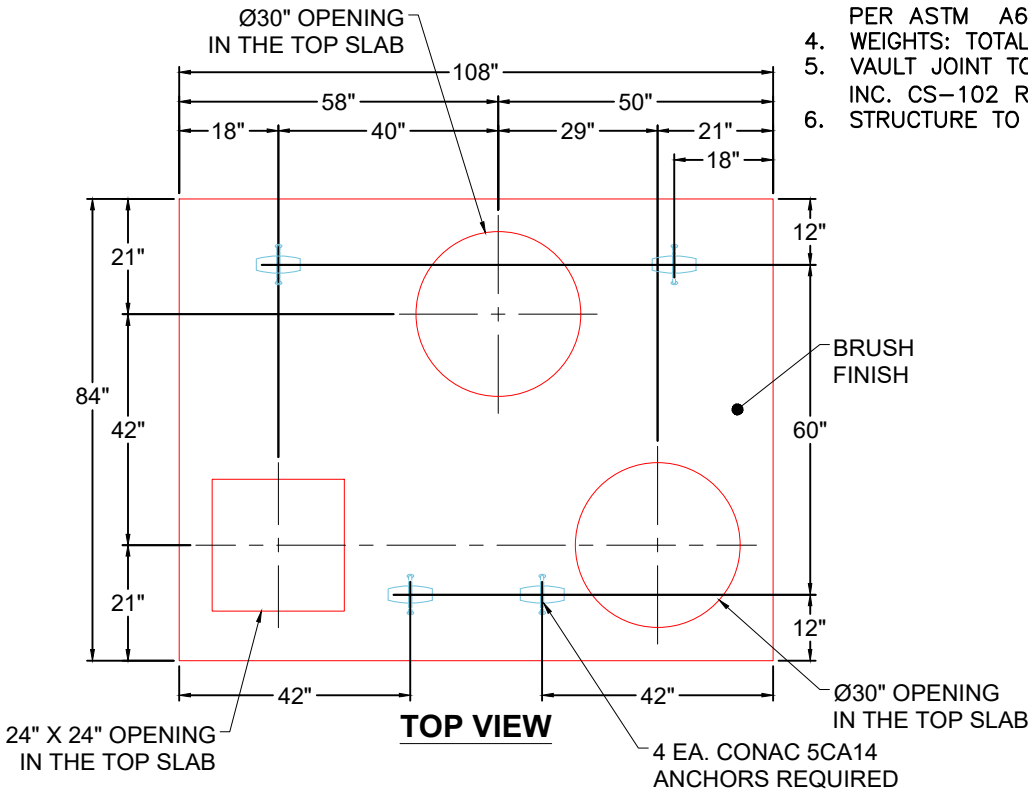
- P3) 24" x 24" - CASTING HEIGHT - 4"
- P2) 72" x 96" - BX FLAT LID 6inW w/SPECIAL - 7.25"
- P1) 72" x 96" - BOX BASE 6inW, 6inF, Variable Ht - 61"
- 1) CVSTENCILING
- 1) ASSEMBLY REQUIRED
- 1) 72" x 96" - Conseal CS-102 1.00"
- 1) 24" x 24" - Conseal CS-102 1.00"
- 1) Hole - 20

- Structure Notes:
1. DESIGN LOADING AASHTO HS-20
 2. DESIGN SPECIFICATION - ACI 318-14
 3. JOINT SEALANT SHALL CONFORM TO ASTM C-443
 4. CONCRETE: 5,000 PSI AT 28 DAYS.
 5. REINFORCING PER ASTM A615 (GRADE 60)
 6. 4" TALL CASTINGS PROVIDED BY OTHERS
 7. ICAST TO INSTALL THE INTERNALS.
 8. CONTECH'S LOGO AS WELL AS ANY INLETS AND OUTLETS MUST BE STENCILED ONTO THE STRUCTURE.

Structure Total: 20066 lb

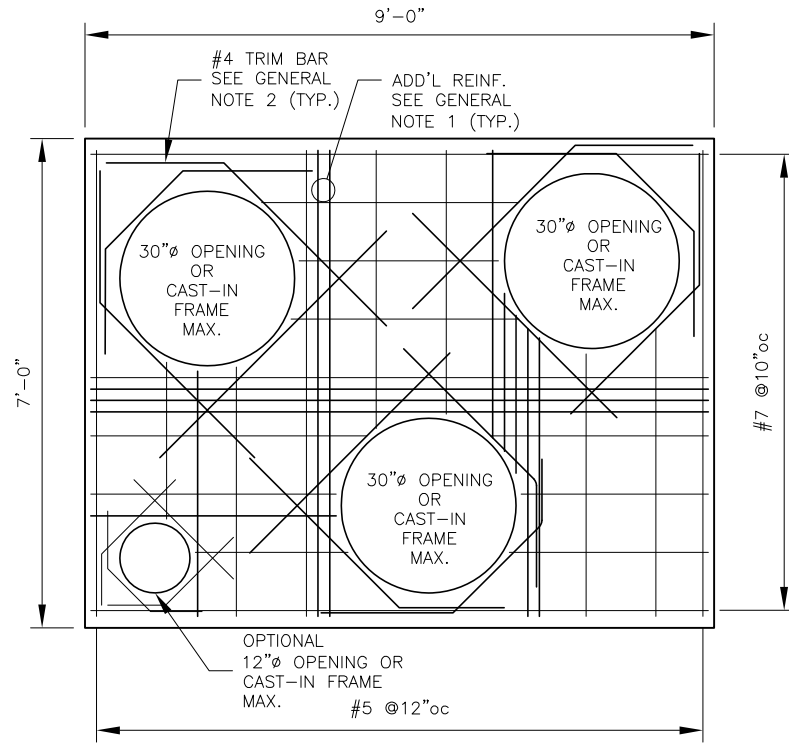
GENERAL NOTES:

1. MANUFACTURED TO ASTM C-913 (LATEST REVISION).
2. CONCRETE: 5,000 PSI AT 28 DAYS. CONCRETE.
3. REINFORCING: USE REINFORCEMENT INFORMATION PROVIDED BY CONTECH.
4. WEIGHTS: TOTAL = 4,600 LBS
5. VAULT JOINT TO BE SEALED WITH CONCRETE SEALANTS, INC. CS-102 ROLL BUTYL MASTIC. (SUPPLIED BY ICAST)
6. STRUCTURE TO HAVE INTERNALS INSTALLED BY ICAST.

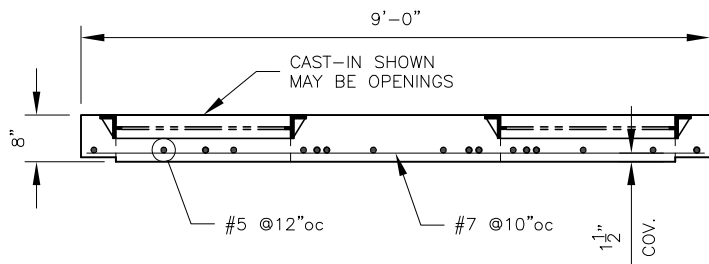


Coating (Int): Coating (Ext):	Seam Up: Flat Seam Dn: Flat	Wall Thickness: 6"	Height (Ext): 7.25"	Weight (Net): 4600 lb Volume (Net): 1.18cu.yd
----------------------------------	--------------------------------	--------------------	---------------------	--

25-4692 - 855187 DISCOUNT TIRE TOP SLAB REINFORCEMENT INFORMATION 10-KFPD0608



PLAN VIEW
(TOP SLAB)



TYPICAL REINFORCING SECTION

DESIGN NOTES

AS PROVIDED BY FOR:

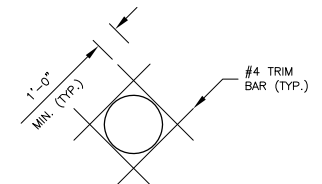
- DESIGN IN ACCORDANCE WITH AASHTO 17TH ED. FOR HS-20 LIVE LOAD.

ASSUMPTIONS: (TO BE VERIFIED BY FOR)

- EARTH COVER = 0'-2'
- UNIT WEIGHT OF SOIL = 120 PCF
- BAR COVER = 1 1/2" U.N.O.
- $f_c @ 28 \text{ DAYS} = 5,000 \text{ PSI}$
- REINFORCEMENT = BAR PER ASTM A615, GRADE 60

GENERAL NOTES:

- PROVIDE ADDITIONAL REINFORCING AROUND OPENINGS EQUAL TO THE BARS INTERRUPTED, HALF EACH SIDE. ADDITIONAL BARS TO BE IN THE SAME PLANE.
- TRIM OPENINGS WITH DIAGONAL #4 BARS, EXTEND BARS MINIMUM 12" BEYOND OPENINGS, BEND BARS AS REQUIRED TO MAINTAIN BAR COVER.
- THIS IS A REINFORCING SUMMARY, REFERENCE CONTECH ENGINEERED SOLUTIONS DRAWINGS FOR: OPENING SIZES, QUANTITY LOCATION AND OTHER INFORMATION.
- LIFTING AND HANDLING BY OTHERS.



OPENING DETAIL
(ROUND SHOWN, SQUARE OR RECT. SIMILAR)

REV. NO.		DATE	REVISION
PREPARED BY:		 860 HOOPER ROAD, ENDWELL, NY 13760-1564 PHONE(607)231-6600 FAX(607)231-6650	
DATE: 3/28/20	SHEET TITLE: REINFORCING SUMMARY	DRWN BY: GJP	CHK BY: DDB
SCALE: N.T.S.	PROJECT: SFPD0608 STORMFILTER TOP SLABS		CONTRACTOR: DELTA PROJ. NO.: 2020.025.028
		DWG. I.D.: RS-02	SHT. NO.: