

Job Name: 25-4692 - 855187 Discount Tire
 Job Location: Hermitage, TN
 Contractor: Contech Engineering Solutions

Plant: Beaver Dam

Tech: J. Coppage

12/15/2025 12:45:16 PM

PC: T. Sekula



Structure ID: 10-KFPD0608

P1 BX7296-06W06-VF

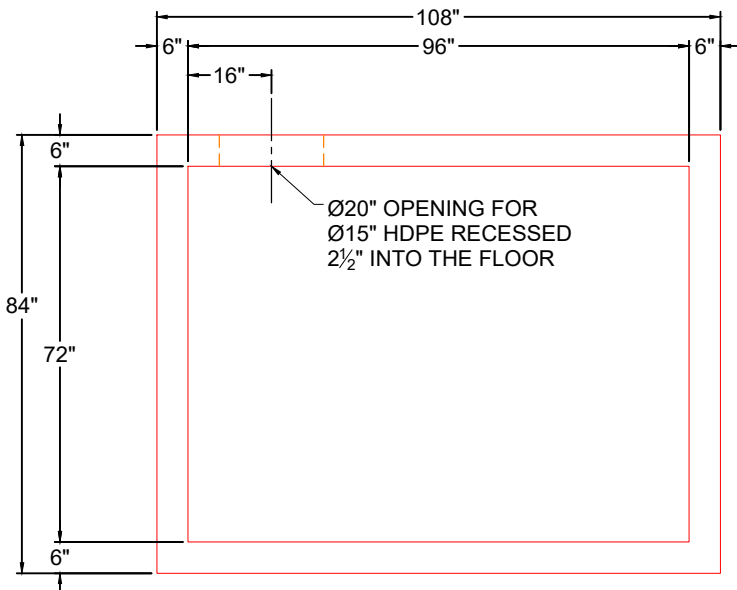
BOX BASE 6inW, 6inF, Variable Ht

- P3) 24" x 24" - CASTING HEIGHT - 4"
- P2) 72" x 96" - BX FLAT LID 6inW w/SPECIAL - 7.25"
- P1) 72" x 96" - BOX BASE 6inW, 6inF, Variable Ht - 61"
- 1) CVSTENCILING
- 1) ASSEMBLY REQUIRED
- 1) 72" x 96" - Conseal CS-102 1.00"
- 1) 24" x 24" - Conseal CS-102 1.00"
- 1) Hole - 20

- Structure Notes:
1. DESIGN LOADING AASHTO HS-20
 2. DESIGN SPECIFICATION - ACI 318-14
 3. JOINT SEALANT SHALL CONFORM TO ASTM C-443
 4. CONCRETE: 5,000 PSI AT 28 DAYS.
 5. REINFORCING PER ASTM A615 (GRADE 60)
 6. (4" TALL CASTINGS PROVIDED BY OTHERS)
 7. ICAST TO INSTALL THE INTERNALS.
 8. CONTECH'S LOGO AS WELL AS ANY INLETS AND OUTLETS MUST BE STENCILED ONTO THE STRUCTURE.

Structure Total: 20066 lb

Rim: 445' Rim to Invert: 5.9' Slack: -1.45' Sump: 0' Step Position:

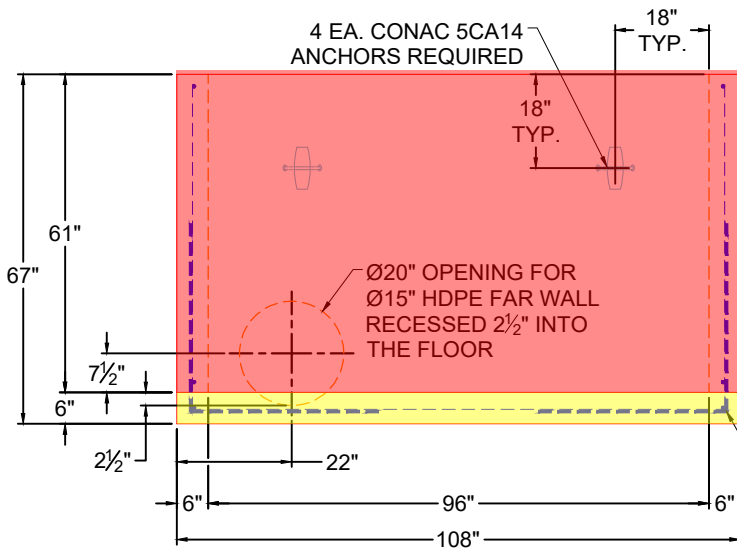


TOP VIEW

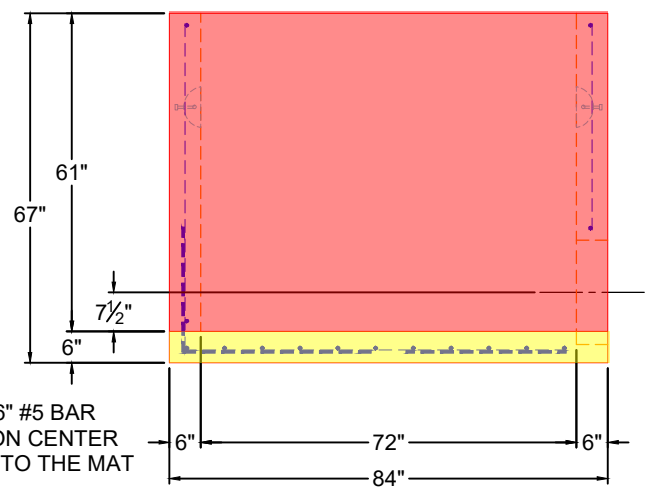
GENERAL NOTES:

1. MANUFACTURED TO ASTM C-913 (LATEST REVISION).
2. CONCRETE: 5,000 PSI AT 28 DAYS. CONCRETE.
3. REINFORCING: USE REINFORCEMENT INFORMATION PROVIDED BY CONTECH. PER ASTM A615 (GRADE 60).
4. WEIGHTS:
FIRST POUR = 4,568 LBS
SECOND POUR = 10,898 LBS
 TOTAL = 15,466 LBS
5. VAULT JOINT TO BE SEALED WITH CONCRETE SEALANTS, INC. CS-102 ROLL BUTYL MASTIC. (SUPPLIED BY ICAST)
6. STRUCTURE TO HAVE INTERNALS INSTALLED BY ICAST.

FIRST POUR DRAWING



FRONT VIEW



RIGHT VIEW

Coating (Int):
 Coating (Ext):

Seam Up: Flat
 Seam Dn: n/a

Wall Thickness: 6"
 Floor Height: 6"

Height (Int): 61"
 Height (Ext): 67"

Weight (Net): 15466 lb
 Volume (Net): 3.95cu.yd

Job Name: 25-4692 - 855187 Discount Tire
 Job Location: Hermitage, TN
 Contractor: Contech Engineering Solutions

Plant: Beaver Dam

Tech: J. Coppage

12/15/2025 12:45:16 PM

PC: T. Sekula



Structure ID: 10-KFPD0608

P1 BX7296-06W06-VF

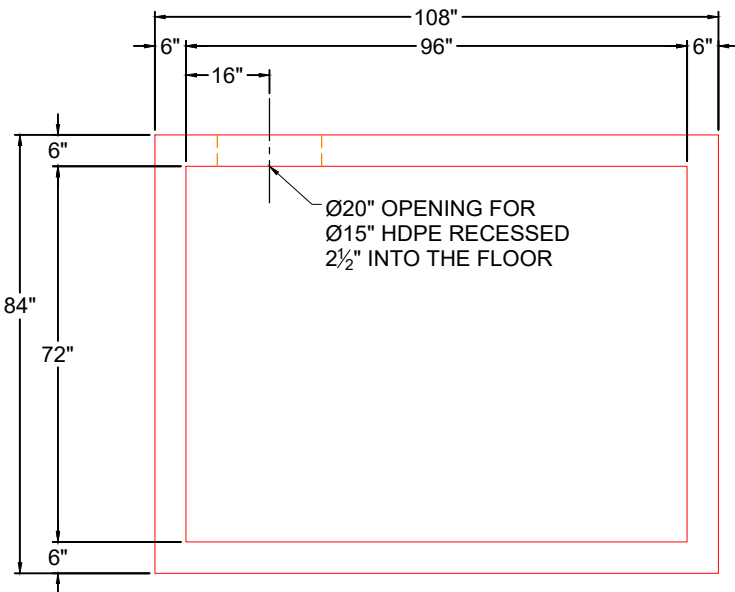
BOX BASE 6inW, 6inF, Variable Ht

- P3) 24" x 24" - CASTING HEIGHT - 4"
- P2) 72" x 96" - BX FLAT LID 6inW w/SPECIAL - 7.25"
- P1) 72" x 96" - BOX BASE 6inW, 6inF, Variable Ht - 61"
- 1) CVSTENCILING
- 1) ASSEMBLY REQUIRED
- 1) 72" x 96" - Conseal CS-102 1.00"
- 1) 24" x 24" - Conseal CS-102 1.00"
- 1) Hole - 20

- Structure Notes:
1. DESIGN LOADING AASHTO HS-20
 2. DESIGN SPECIFICATION - ACI 318-14
 3. JOINT SEALANT SHALL CONFORM TO ASTM C-443
 4. CONCRETE: 5,000 PSI AT 28 DAYS.
 5. REINFORCING PER ASTM A615 (GRADE 60)
 6. (4" TALL CASTINGS PROVIDED BY OTHERS)
 7. ICAST TO INSTALL THE INTERNALS.
 8. CONTECH'S LOGO AS WELL AS ANY INLETS AND OUTLETS MUST BE STENCILED ONTO THE STRUCTURE.

Structure Total: 20066 lb

Rim: 445' Rim to Invert: 5.9' Slack: -1.45' Sump: 0" Step Position:

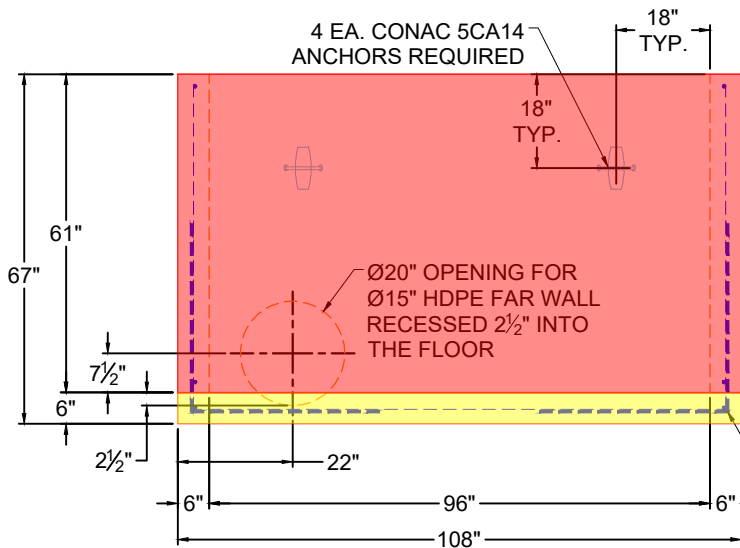


TOP VIEW

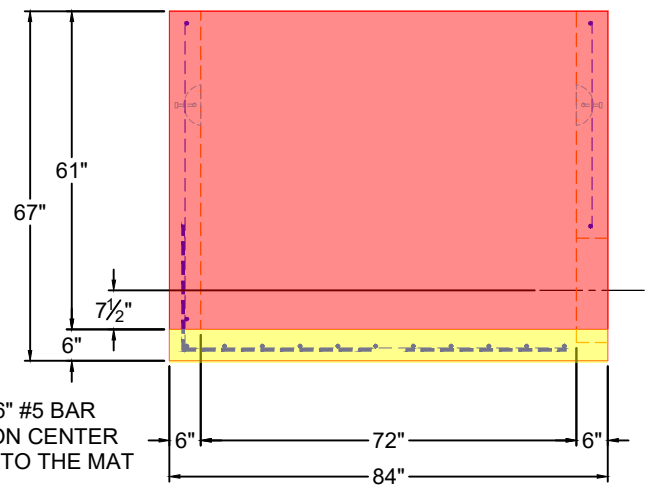
GENERAL NOTES:

1. MANUFACTURED TO ASTM C-913 (LATEST REVISION).
2. CONCRETE: 5,000 PSI AT 28 DAYS. CONCRETE.
3. REINFORCING: USE REINFORCEMENT INFORMATION PROVIDED BY CONTECH. PER ASTM A615 (GRADE 60).
4. WEIGHTS:
 FIRST POUR = 4,568 LBS
 SECOND POUR = 10,898 LBS
 TOTAL = 15,466 LBS
5. VAULT JOINT TO BE SEALED WITH CONCRETE SEALANTS, INC. CS-102 ROLL BUTYL MASTIC. (SUPPLIED BY ICAST)
6. STRUCTURE TO HAVE INTERNALS INSTALLED BY ICAST.

SECOND POUR DRAWING



FRONT VIEW



RIGHT VIEW

Coating (Int):
 Coating (Ext):

Seam Up: Flat
 Seam Dn: n/a

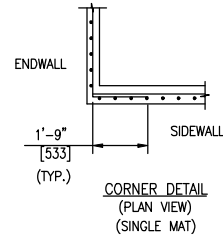
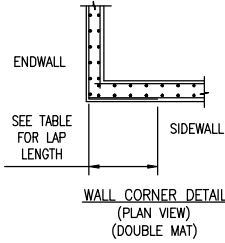
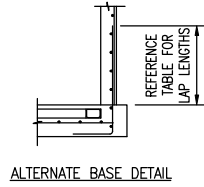
Wall Thickness: 6"
 Floor Height: 6"

Height (Int): 61"
 Height (Ext): 67"

Weight (Net): 15466 lb
 Volume (Net): 3.95cu.yd

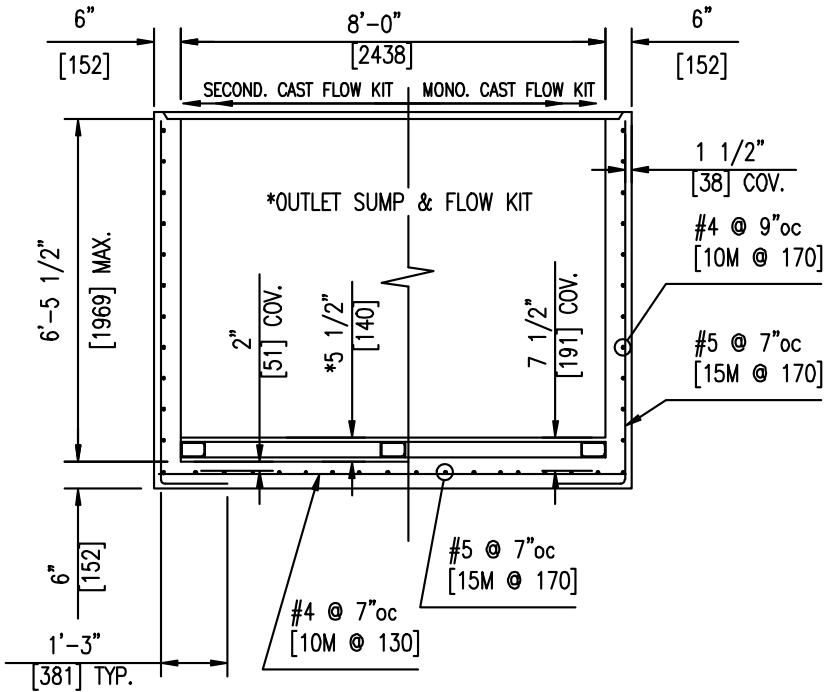
25-4692 - 855187 DISCOUNT TIRE BASE REINFORCEMENT INFORMATION 10-KFPD0608

MINIMUM LAP	
BAR SIZE	LAP
#4 (10M)	21" (535)
#5 (15M)	26" (660)
#6 (20M)	31" (790)
#7 (20M)	36" (915)
#8 (25M)	46" (1170)



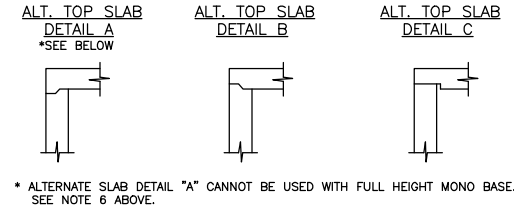
- NOTES:
- DESIGN LOAD = AASHTO HS20-44
 - CONCRETE STRENGTH = 5000psi
 - REINFORCING STEEL - GRADE 60
 - CHART BELOW SHOWS MAXIMUM DEPTH OF FILL FOR UNIT CLASS AT VARIOUS WATER TABLE DEPTHS. DRY INDICATED W/T BELOW UNIT. FILL DEPTHS GREATER THAN 10' SHALL REQUIRE SPECIAL DESIGN.
 - PIPE OPENINGS, SIZE AND LOCATION, AS REQUIRED. PROVIDE ADDITIONAL REINFORCING EQUAL TO THE BARS INTERRUPTED, 1/2 EACH SIDE. ADD #4 DIAGONAL TRIM BARS AROUND OPENINGS.
 - FULL HEIGHT MONO BASE UNIT MUST HAVE TOP SLAB IN PLACE PRIOR TO BACK FILLING.
 - BAR WEIGHTS AND DETAILS BASED ON VISUAL SHOWN.
 - SECONDARY CAST FLOW KIT SHALL BE IN PLACE PRIOR TO BACK FILLING.
 - THE OPENING SIZES AND LOCATIONS MAY VARY. FOR EXACT SIZES AND LOCATIONS SEE CONTECH PROJECT SPECIFIC DRAWINGS.

SECTION	0	3	6	9	DRY
FULL BASE	2.75	4.25	5.75	8.25	10.00



FULL HEIGHT MONOLITHIC BASE UNIT
(BAR WEIGHT = 839 LBS.)
SEE NOTE 6

ALTERNATE WALL DESIGN (HORIZONTAL BARS TO OUTSIDE)			
WALLS	VERT.	HORIZ.	COV. TO HORIZ.
6"	#5 @ 10"	#4 @ 10"	1 1/2"



STORMFILTER 8' X 6': 600 CLASS 6'-0" L x 8'-0" W x 6'-0" I.D.

TITLE: STORMFILTER 8 X 6 - 600 CLASS
PROJECT: STORMFILTER
DRAWN BY: KMK
CHECKED BY: SLV
SCALE: NONE
DATE: 10/2009
JOB No: 2007.025.058
NUMBER: SFBX6

