

Job Name: 25-4690 - Elk Horn Estates Unit 1 Job Location: Winchester, KY Contractor: C&R Asphalt, LLC	Plant: 100 1/26/2026 11:08:41 AM	Tech: J. Horsley - F PC: T. Lewis	
---	-------------------------------------	--------------------------------------	--

Structure ID: 5752

P1 BX2436-08BA18

BOX BASE 8inW, 8inF T/n

P3) 24" x 60" - CB INLET KY A 5' TOP RIGHT F/G - 10"	1895 lb
P2) 24" x 60" - CB INLET KY A 5' BOTTOM RIGHT T/G - 18"	2670 lb
P1) 24" x 36" - BOX BASE 8inW, 8inF T/n - 18"	2965 lb
1) CASTING - HOE KY-206 F/C (KY CBI A)	206 lb
1) This Structure Includes a Cast-in Item - HOE KY-206 Frame	0 lb
1) 24" x 36" - Conseal CS-102 1.00"	0 lb
1) DOGHOUSE INVRTD - 20"x20"	0 lb
Structure Total:	7736 lb

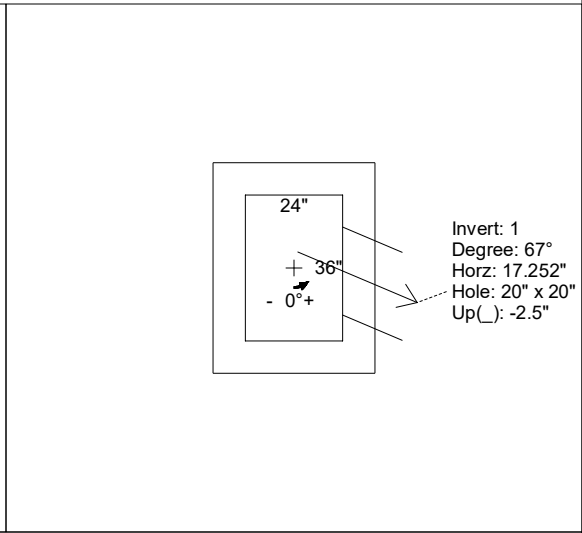
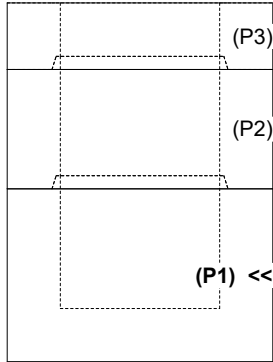
- Structure Notes:**
- PER KYTC CBI TYPE A / ASTM C-913 SPECIFICATIONS
 - CONCRETE: 4,000 PSI AT 28 DAYS
 - REINFORCEMENT: #5 BAR @ 12" C.C. E.W. (GRADE 60) - 2" MIN. REBAR CLEARANCE (TYP)
 - NO STORM INVERT
 - NO STEPS
 - HOE KY-206 FRAME & COVER "STORM" SUPPLIED BY ICAST - FRAME TO BE CAST INTO TOP PHASE TOP FLANGE SIDE UP

Rim: 1031.88' Rim to Invert: 3.88' Slack: 0.56" Sump: 0" Step Position:

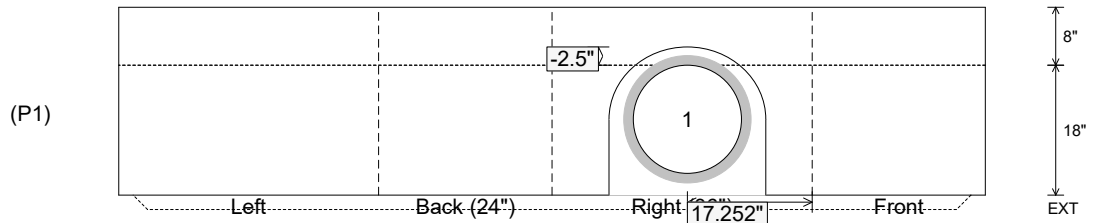
Position	Elev	Angle	Ext. (cw)	Pipe	Pipe OD	Connector	Hole	Horz Size	Up ()	Offset
Invert 1	1028'	67°	21.856"	15" HDPE	17.6"	DOGHOUSE INVRTD 20"x20"	20" x 20"	21.727"	-2.5"	4"
Invert 2										
Invert 3										
Invert 4										
Invert 5										
Invert 6										
Invert 7										
Invert 8										

RIGHT-SIDE UP VIEW (int. dimensions)

UPSIDE-DOWN VIEW (int. dimenions)



INSIDE WALL DIMENSIONS



Coating (Int): Coating (Ext):	Seam Up: Tongue Seam Dn: n/a	Wall Thickness: 8" Floor Height: 8"	Height (Int): 18" Height (Ext): 26"	Weight (Net): 2965 lb Volume (Net): 0.76cu.yd
----------------------------------	---------------------------------	--	--	--