

Job Name: 25-4690 - Elk Horn Estates Unit 1
 Job Location: Winchester, KY
 Contractor: C&R Asphalt, LLC

Plant: 100

1/26/2026 11:08:40 AM

Tech: J. Horsley - F

PC: T. Lewis



Structure ID: 1434L

P1 BX2436-08BVF

BOX BASE 8inW, 8inF, Variable Ht T/n

- P3) 24" x 60" - CB INLET KY A 5' TOP LEFT F/G - 10"
- P2) 24" x 60" - CB INLET KY A 5' BOTTOM LEFT T/G - 18"
- P1) 24" x 36" - BOX BASE 8inW, 8inF, Variable Ht T/n - 26"
- 1) CASTING - HOE KY-206 F/C (KY CBI A)
- 1) This Structure Includes a Cast-in Item - HOE KY-206 Frame
- 1) 24" x 36" - Conseal CS-102 1.00"
- 3) Hole - 20"

1895 lb
 2670 lb
 3393 lb
 206 lb
 0 lb
 0 lb
 0 lb

 8164 lb

Structure Total: 8164 lb

Structure Notes:

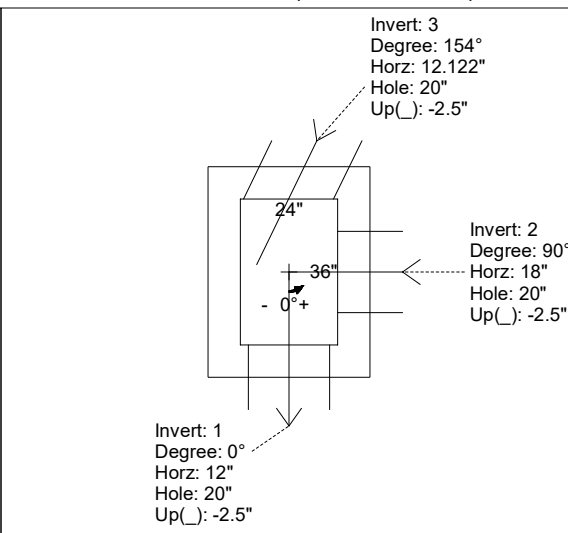
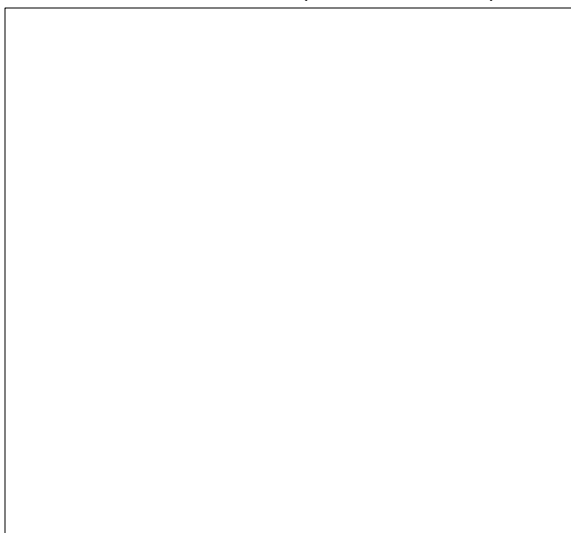
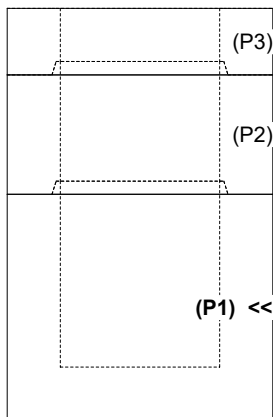
1. PER KYTC CBI TYPE A / ASTM C-913 SPECIFICATIONS
2. CONCRETE: 4,000 PSI AT 28 DAYS
3. REINFORCEMENT: #5 BAR @ 12" C.C. E.W. (GRADE 60) - 2" MIN. REBAR CLEARANCE (TYP)
4. NO STORM INVERT
5. NO STEPS
6. HOE KY-206 FRAME & COVER "STORM" SUPPLIED BY ICAST - FRAME TO BE CAST INTO TOP PHASE TOP FLANGE SIDE UP

Rim: 1030.5' Rim to Invert: 4.5' Slack: 0" Sump: 0" Step Position:

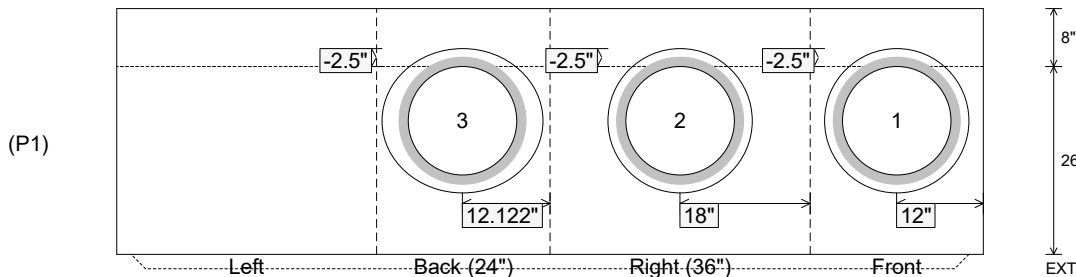
Position	Elev	Angle	Ext. (cw)	Pipe	Pipe OD	Connector	Hole	Horz Size	Up (↓)	Offset
Invert 1	1026'	0°	20"	15" HDPE	17.6"	Hole 20	20"	20"	-2.5"	0"
Invert 2	1026'	90°	26"	15" HDPE	17.6"	Hole 20	20"	20"	-2.5"	0"
Invert 3	1026'	154°	16.22"	15" HDPE	17.6"	Hole 20	20"	22.252"	-2.5"	8"
Invert 4										
Invert 5										
Invert 6										
Invert 7										
Invert 8										

RIGHT-SIDE UP VIEW (int. dimensions)

UPSIDE-DOWN VIEW (int. dimensions)



INSIDE WALL DIMENSIONS



Coating (Int):
 Coating (Ext):

Seam Up: Tongue
 Seam Dn: n/a

Wall Thickness: 8"
 Floor Height: 8"

Height (Int): 26"
 Height (Ext): 34"

Weight (Net): 3393 lb
 Volume (Net): 0.87cu.yd