

Job Name: 25-4689 Water Tank Site Improvements
 Job Location: Crossville, TN
 Contractor: John T Hall Construction

Plant: 100
 3/24/2026 2:45:20 PM

Tech: Jared- A
 PC: Erica Bradley



Structure ID: 54689 (2)

P3 BX120180-08LD08SP

BX FLAT LID 8"W w/60"x72" HATCH

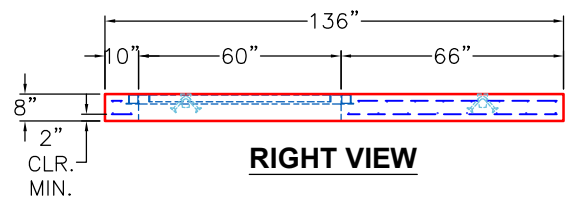
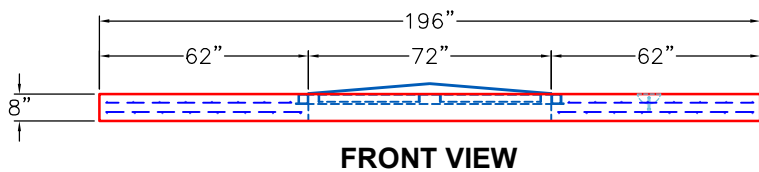
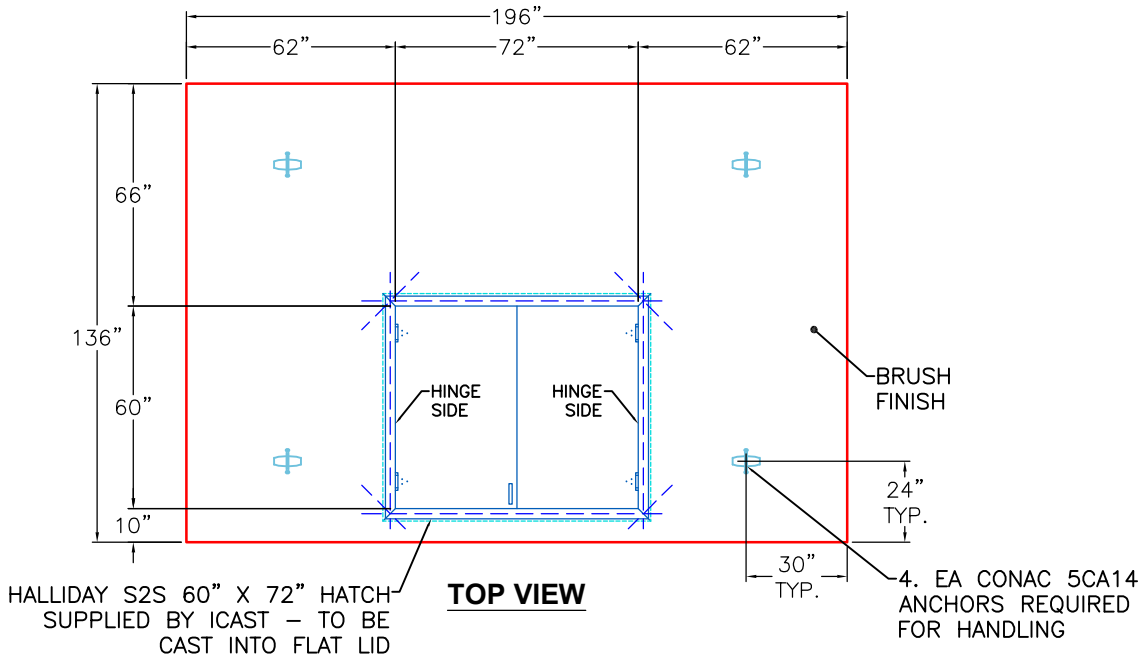
- P4) 60" x 72" - HATCH (CAST FLUSH) - 3"
- P3) 120" x 180" - BX FLAT LID 8"W w/60"x72" HATCH - 8"
- P2) 120" x 180" - BOX RISER 8inW, Variable Ht - 61"
- P1) 120" x 180" - BX Separate Base Slab - 14"
- 1) SECONDARY POUR - Walls
- 1) HATCH (Alum.) - HALLIDAY S2S 72"x60"
- 2) 120" x 180" - Conseal CS-231 1.00" (Double)

	100 lb
	14994 lb
	25456 lb
	41351 lb
	0 lb
	225 lb
	0 lb
Structure Total:	82126 lb

- Structure Notes:**
1. MANUFACTURED PER ASTM C-913 (LATEST REVISION)
 2. CONCRETE: 5,000 PSI AT 28 DAYS
 3. REINFORCEMENT: PER ASTM A615 (GRADE 60)
 TOP SLAB: #6 BAR @ 9" C-C E.W. DBL MAT
 WALLS: #5 BAR @ 8" C-C E.W.
 BASE SLAB: #5 BAR @ 12" C-C E.W. DBL MAT
 4. HATCH: HALLIDAY S2S 60" X 72" PROVIDED BY ICAST
 5. LADDER SUPPLIED BY ICAST.

GENERAL NOTES:

1. MANUFACTURED PER ASTM C-913 (LATEST REVISION)
2. CONCRETE: 5,000 PSI AT 28 DAYS
3. REINFORCEMENT - 2" MIN. REBAR CLEARANCE (TYP):
 - TOP SLAB: #6 BAR @ 9" C.C. E.W. (GRADE 60) DBL. MAT
4. WEIGHTS: 8" TOP SLAB - 14,994 LBS
5. HALLIDAY S2S 60" X 72" HATCH SUPPLIED BY ICAST TO BE CAST INTO FLAT LID
6. JOINT TO BE SEALED WITH CS-231 1" BUTYL DOUBLE



Coating (Int): Coating (Ext):	Seam Up: Flat Seam Dn: Flat	Wall Thickness: 8"	Height (Ext): 8"	Weight (Net): 14994 lb Volume (Net): 3.83cu.yd
----------------------------------	--------------------------------	--------------------	------------------	---