

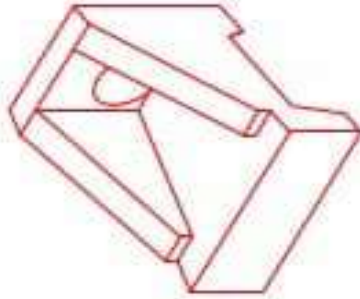


Structure ID: 9 (10)

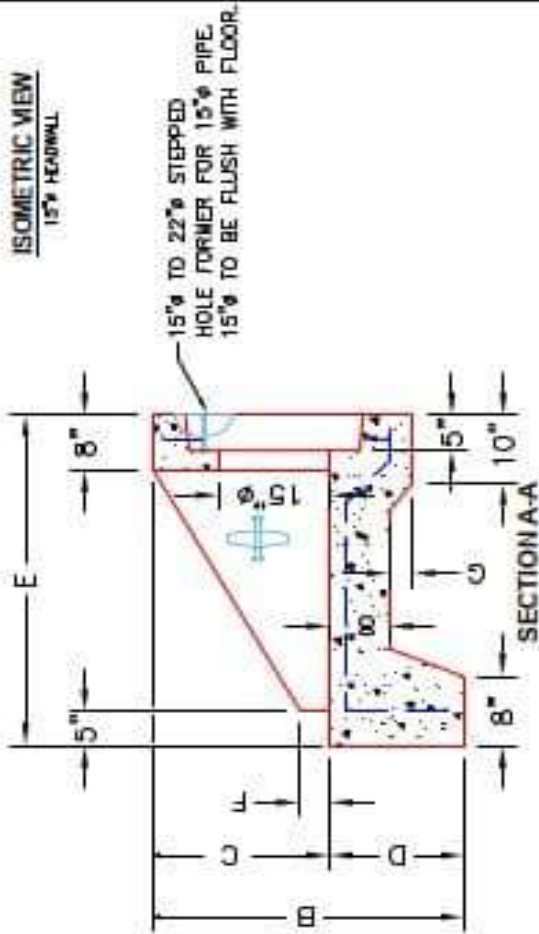
P1 HWSF15

15" - SLOPED & FLARED HEADWALL F/F

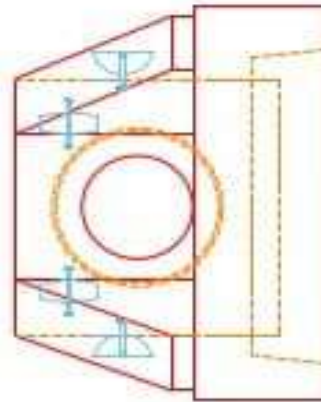
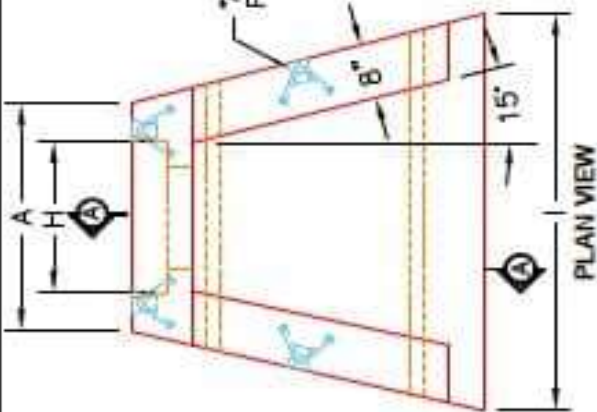
DIMENSIONS										
PPE #	A	B	C	D	E	F	G	H	I	WEIGHT
15"	2'-8"	2'-8"	2'-0"	1'-8"	4'-0"	3"	2"	2'-0"	4'-0"	3,161 LBS.



ISOMETRIC VIEW
15" HEADWALL



A-ANCHOR LIFTING SYSTEM FOR PLANT & FIELD HANDLING.



NOTES:

1. CONCRETE: 4500 PSI @ 28 DAYS.
2. REINFORCING: #4 BAR @ 12" C/C E-W - GRADE @ 0, (WITH 2" CONCRETE COVER MINIMUM)
3. REINFORCING BARS TO BE TACK WELDED OR TIED.
4. DRAWING TO BE USED IN CONJUNCTION WITH KYTC STD. DRAWING RDH-020-03 AND THE STANDARD SPECIFICATIONS FOR ROAD AND BRIDGE CONSTRUCTION.
5. CHAMFER ON ALL EXPOSED EDGES.

PRODUCTION WORK ORDER

- QUALITY CONTROL CHECKLIST
- ALL DIMENSIONS CORRECT.
 - LIFTERS INSTALLED.
 - STEPPED HF CORRECT SIZE.
 - REINFORCING CORRECT.
 - DISPENSER BLOCK INSTALLED.
 - EDGES CHAMFERED.
 - ALL PATCHWORK ACCEPTABLE.



DESCRIPTION: KYTC 15" SLOPED & FLARED HEADWALL
CUSTOMER: STOCK
PROJECT: STOCK INVENTORY
STRUCTURE ID: N/A
QUOTE/SALES ORDER NO: N/A
CHECK: J.H. ROSS, PE
DRAWING: N. RICHARDS
DATE: 09/15/22
SCALE: NTS
PG. 1 of 1