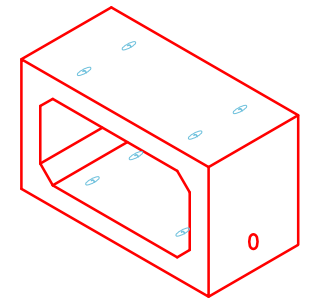
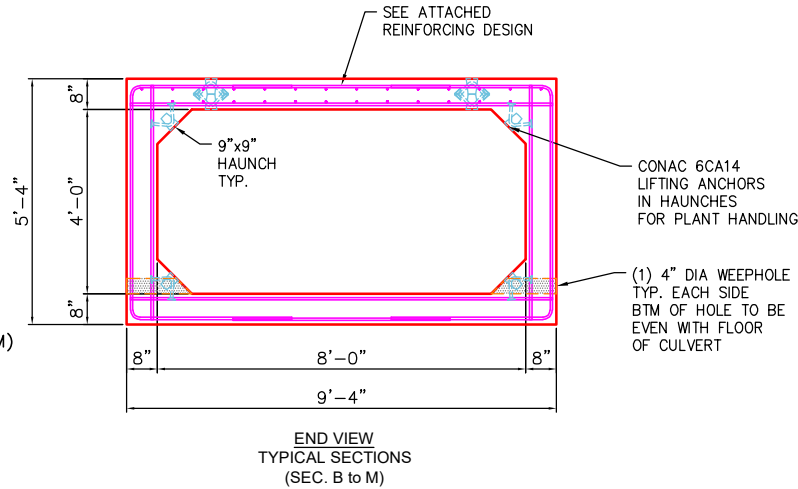
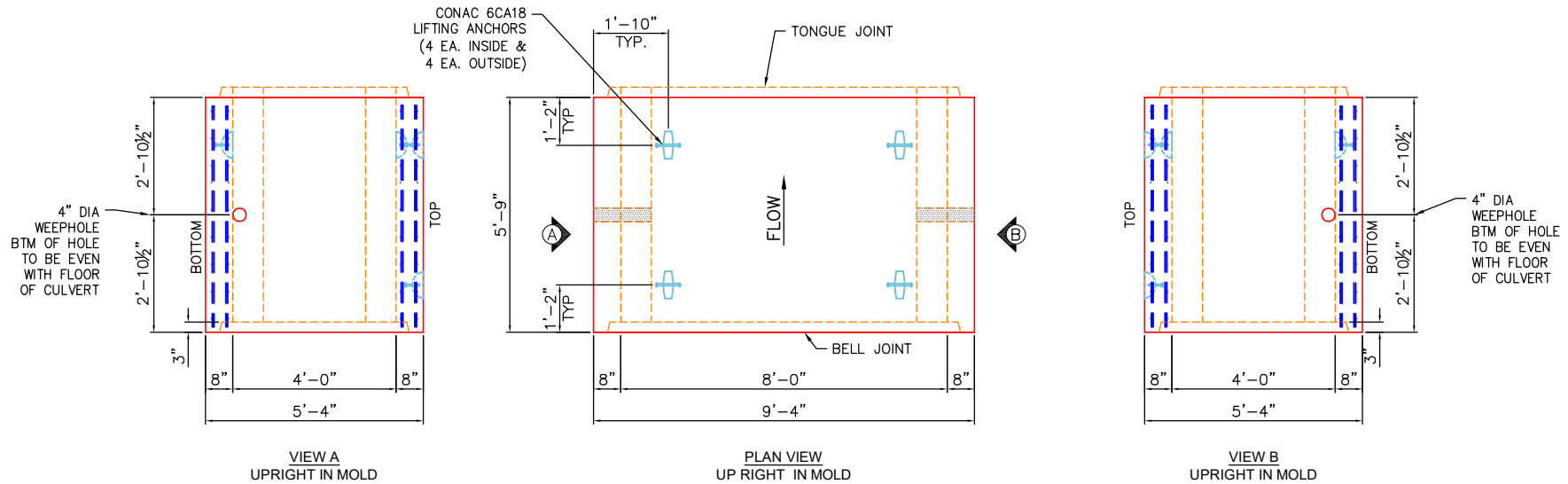



NOTES:

1. BOX CULVERT IS DESIGNED PER SECTION 605 OF THE KYTC STANDARD SPECIFICATIONS FOR ROAD & BRIDGE CONSTRUCTION.
 - KYTC STAMP REQUIRED.
 - WEEP HOLES REQUIRED.
2. LOAD REQUIREMENTS = KY-HL93 (KY TABLE 1).
3. COVER DEPTH = 0' TO 4'.
4. CONCRETE: 5,000 PSI AT 28 DAYS.
5. JOINT SEALANT = 1" BUTYL MASTIC (CS 102).
6. EXTERIOR JOINT WRAP = 12" WIDE CS212.
7. REINFORCING PER ASTM C1577 (GRADE 60).
8. WEIGHT = 8'x4' RCBC = 2,577 LBS/L.FT
 - 5.17' LONG SECTION = 16,871 LBS (SEC. N)
 - 5.75' LONG SECTION = 14,822 LBS (SEC. A-M)



COMPONENT ISOMETRIC VIEW



PRODUCTION WORK ORDER		PRODUCT I.D.: BC096048-08WLF-9H	DESCRIPTION: 96"x48"x69" BOX CULV. (8W & 9" HAUNCH)
	QUALITY CONTROL CHECKLIST	PRODUCT VIEW: RIGHT SIDE UP	CUSTOMER: SCOTTY'S CONTRACTING & STONE LLC.
	<input type="checkbox"/> ALL DIMENSIONS CORRECT.	PLANT: BEAVER DAM, KY.	PROJECT: INDUSTRIAL DRIVE EXTENSION
	<input type="checkbox"/> LIFTERS INSTALLED INSIDE.	WEIGHT: 14,822 LBS.	STRUCTURE: 8x4 BC (SEC. B-M) P12
	<input type="checkbox"/> RECESS WITH HAUNCHES CORRECT.	TOP JOINT: TONGUE	SALES ORDER/QUOTE NO: 25-4685BC
	<input type="checkbox"/> REINFORCING CORRECT.	BOTTOM JOINT: GROOVE	CHECK: B. SMITH DRAWING: J. HORSLEY
	<input type="checkbox"/> SURFACE QUALITY ACCEPTABLE.	QC CHECK INITIALS:	DATE: 02/19/26 SCALE: NTS PG. 1 of 1
<input type="checkbox"/> LIFTERS INSTALLED OUTSIDE.			
<input type="checkbox"/> PRODUCT SQUARE.			

INFRASTRUCTURE PRECAST (ICAST)

Sht _____ of _____

By: J. Horsley

Ck: _____

2/19/2026 2:31:59 PM

Page 1 of 4

Project : Morgantown Industrial Park

Task : 8x4 BC

Job No. : 25-4685BC

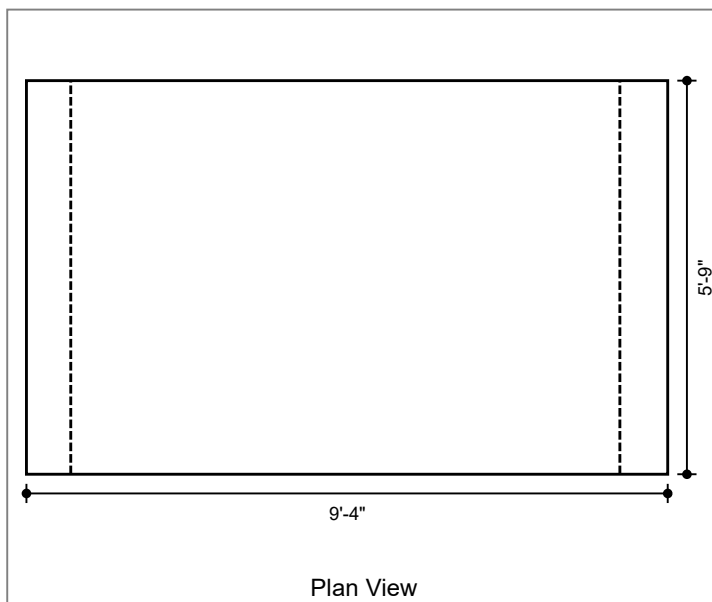
Client: Scotty's Contractng

File: 8x4 Four Sided - 25-4685BC Morgantown Industrial Park.dwg

Spec.: LRFD 9th ed.
Type of Culvert: Precast

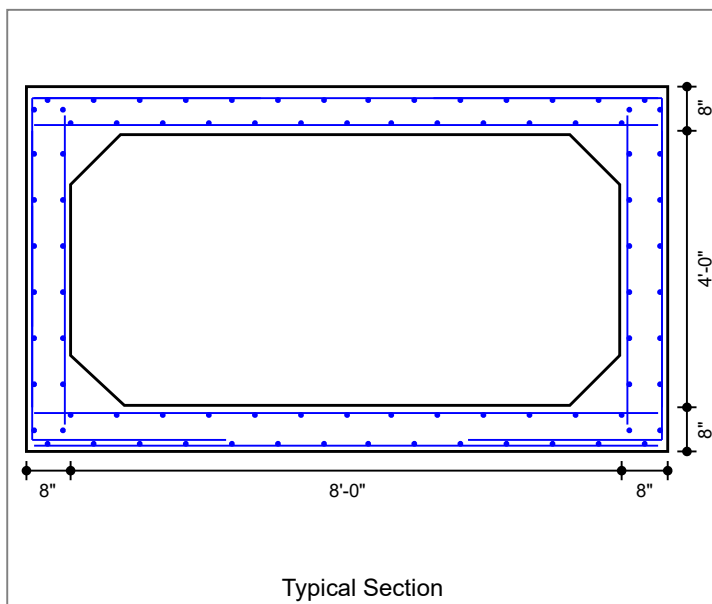
Physical Dimensions

Clear Span:	8'-0"
Clear Height:	4'-0"
Top Slab:	8"
Bottom Slab:	8"
Ext. Wall:	8"
Fill Depth Range	
Maximum:	3.99 ft
Minimum:	2.00 ft
Increment:	0.50 ft
Length:	5'-9"
Skew Angle:	0.00 deg
Bottom Slab Support:	Full Slab
Top Haunch, Width:	9"
Top Haunch, Height:	9"
Bottom Haunch, Width:	9"
Bottom Haunch, Height:	9"



Material Properties

Concrete	
Strength, f'c:	5.000 ksi
Density:	0.150 kcf
Elasticity, Ec:	4592 ksi
Type:	Normal wt
Steel	
Yield, fy:	60 ksi
Allow Stress:	36 ksi
Elasticity, Es:	29000 ksi
Soil	
Density:	0.120 kcf
Exposure Factor	Class 2 Exposure
Reinforcement Covers	
Ext. Cover Top Slab:	2"
Ext. Cover Bottom Slab:	1"
Ext. Cover Walls:	1"
Int. Cover Walls:	1"
Int. Cover Top Slab:	1"
Int. Cover Bottom Slab:	1"



Controlling Ratings

Inventory Rating: 1.30
Operating Rating: 1.68

Loads

Live Load	
Vehicle Names:	KY HL-93
Traffic Direction:	Parallel
Eq. Height of Soil:	Calculated
Dead Load	
Future Wearing Surface:	0.000 klf
Additional Dead Load:	0.000 klf
Concentrated Loads:	none

Lateral Soil Loads	
Eq. Fluid Press. Max:	60.00 pcf
Eq. Fluid Press. Min:	30.00 pcf

Interior Water Pressure: yes, head pressure = 0 ft
Exterior Water Pressure: no

INFRASTRUCTURE PRECAST (ICAST)

Sht _____ of _____
 By: J. Horsley
 Ck: _____
 2/19/2026 2:31:59 PM
 etc of 4

Project : Morgantown Industrial Park

Task : 8x4 BC

Client: Scotty's Contractng

Job No. : 25-4685BC

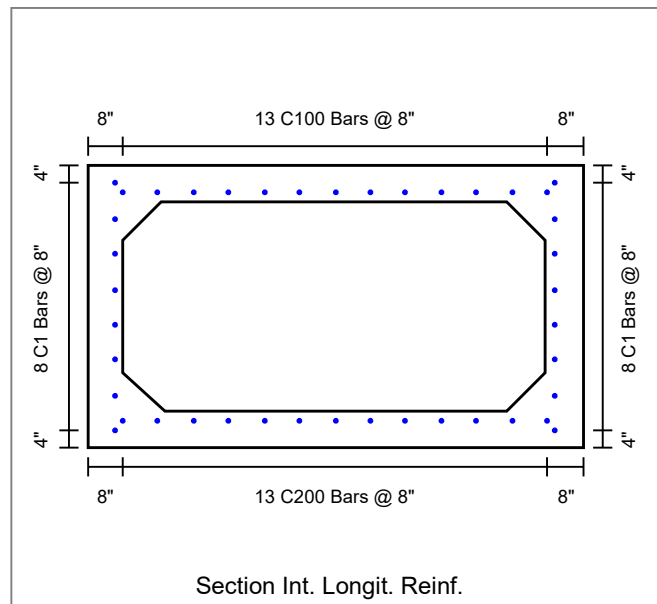
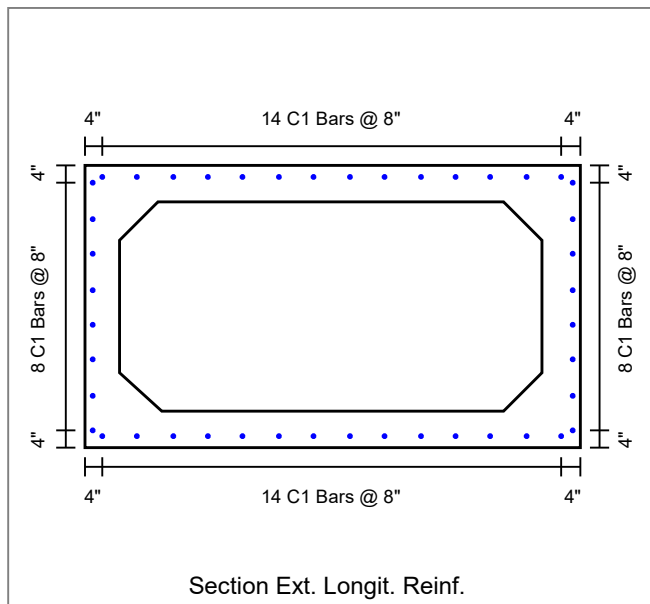
File: 8x4 Four Sided - 25-4685BC Morganton Industrial Park

Concrete Summary

Volume of Concrete: 0.700 cy/ft Total Volume of Concrete: 4.026 cy

Reinforcing Steel Bar Schedule (lb)

Location	Mark	Qty	Size	Spacing	Type	Length	Hor.Leg	Ver.Leg	Tot.Weight
Top Slab(Int)	A100 (AS2)	12	5	6"	S	9'-1"	--	--	114.0
Bot Slab(Int)	A200 (AS3)	9	5	8"	S	9'-1"	--	--	85.0
Top Slab(Ext)	A300 (AS7)	12	5	6"	S	9'-1"	--	--	114.0
Bot Slab(Ext)	A400 (AS8)	9	5	8"	S	9'-1"	--	--	85.0
Corner(Top)	A1 (AS1)	24	5	6"	L	6'-8"	3'-4"	3'-4"	167.0
Corner(Bot)	A2 (AS1)	18	5	8"	L	6'-3"	2'-10"	3'-5"	117.0
Wall(Int)	B1 (AS4)	18	5	8"	S	4'-6"	--	--	84.0
Wall(Ext)	B2 (AS1)	18	5	8"	S	4'-0"	--	--	75.0
Longit. Top (Int)	C100 (AS5)	13	5	8"	S	5'-8"	--	--	77.0
Longit. Bot (Int)	C200	13	5	8"	S	5'-8"	--	--	77.0
Longit. Top (Ext)	C1 (AS6)	14	5	8"	S	5'-8"	--	--	82.8
Longit. Bot (Ext)	C1 (AS6)	14	5	8"	S	5'-8"	--	--	82.8
Longit. Wall (Ext)	C1 (AS6)	16	5	8"	S	5'-8"	--	--	94.6
Longit. Wall (Int)	C1 (AS6)	16	5	8"	S	5'-8"	--	--	94.6
									1350



INFRASTRUCTURE PRECAST (ICAST)

Sht _____ of _____

By: J. Horsley

Ck: _____

2/19/2026 2:31:59 PM

Project : Morgantown Industrial Park

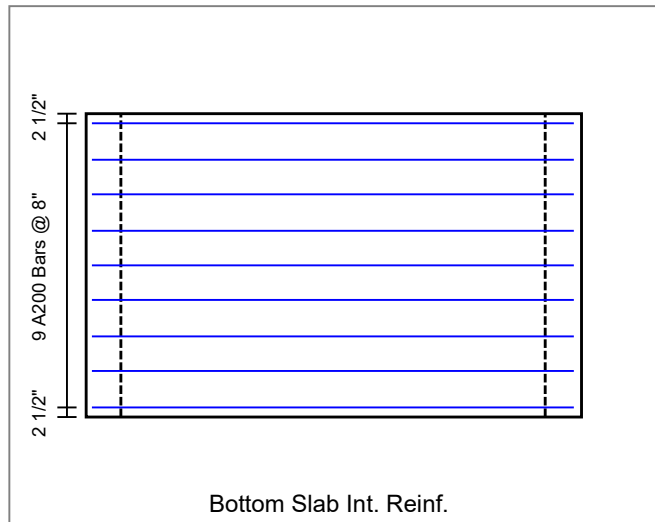
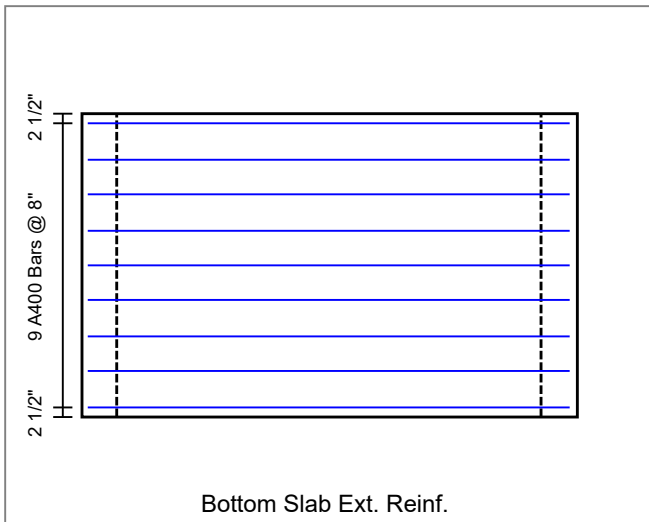
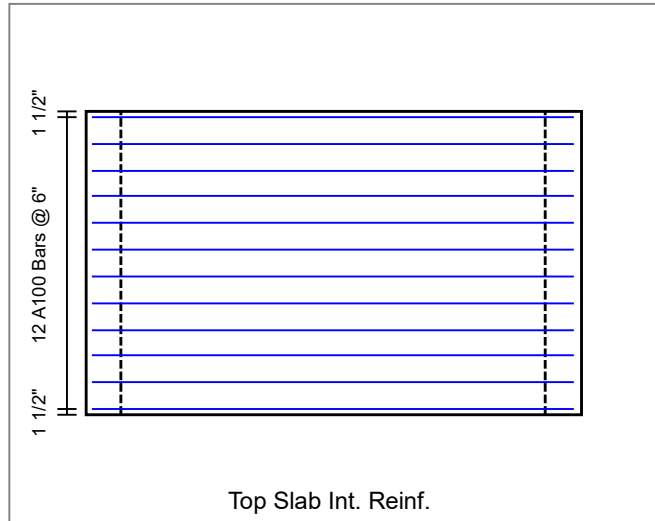
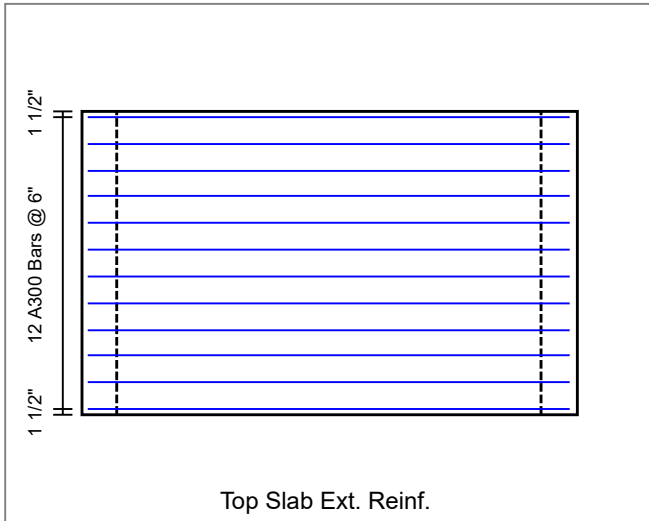
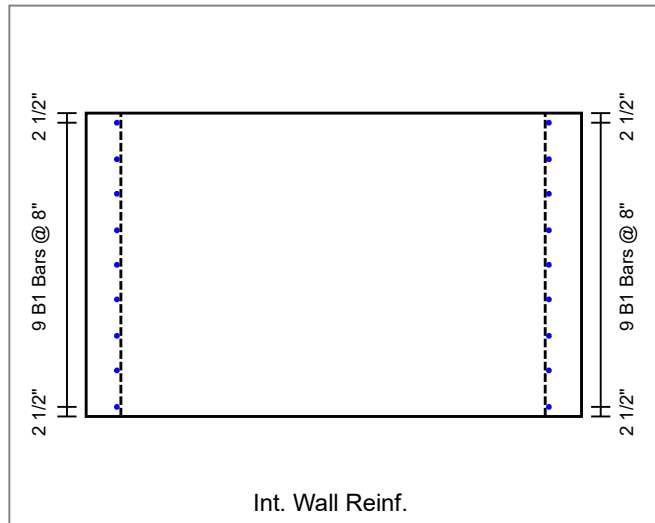
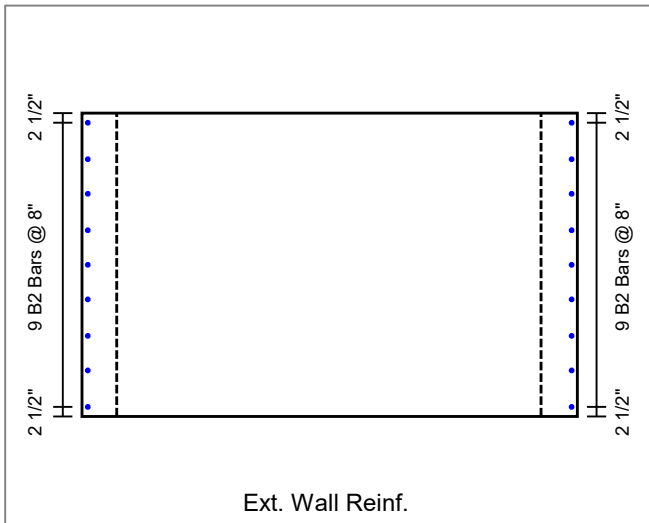
Task : 8x4 BC

Client: Scotty's Contractng

Job No. : 25-4685BC

File: 8x4 Four Sided - 25-4685BC Morgantown Industrial Park

etc of 4



INFRASTRUCTURE PRECAST (ICAST)

Sht _____ of _____

By: J. Horsley

Ck: _____

2/19/2026 2:32:00 PM

Project : Morgantown Industrial Park

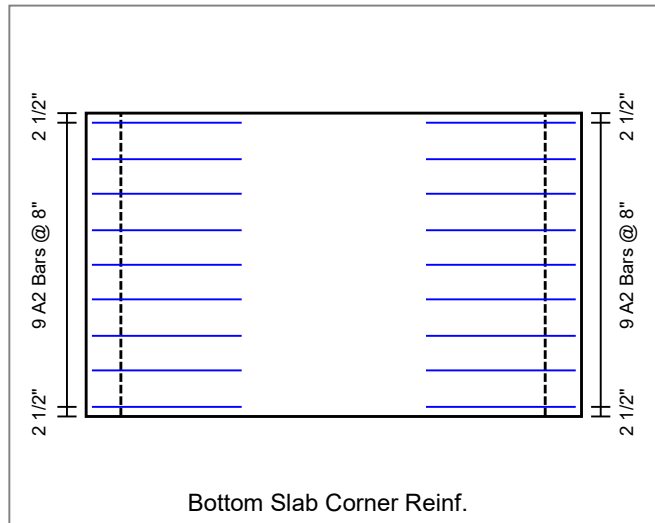
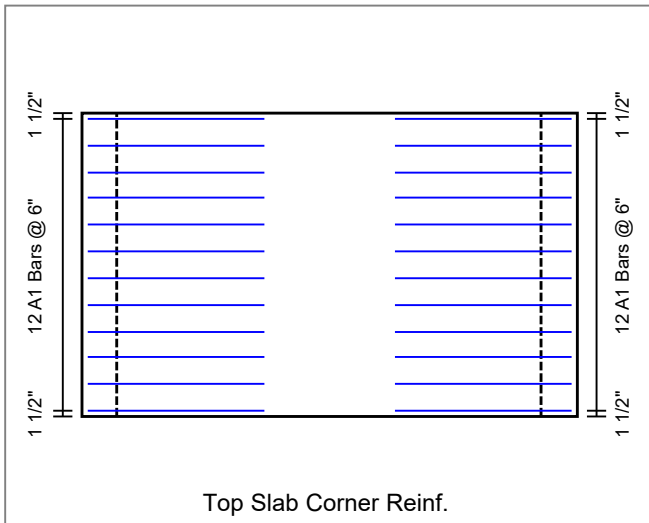
Task : 8x4 BC

Client: Scotty's Contractng

Job No. : 25-4685BC

File: 8x4 Four Sided - 25-4685BC Morganton Industrial Park

Sheet 4 of 4



REINFORCEMENT SUMMARY
 =====

M dimension = 1' 8" (method of equivalent capacity)
 = 4' 1" (method of contraflexure - ASTM)

Reinforcing steel Schedule

Location	Bar Mark	Qty	Size	Type	Spacing (in)	As,prv (in2/ft)	Length (ft-in)	Wgt (lbs)	H Leg (ft-in)	V Leg (ft-in)
Top slab (int)	A100 (AS2)	12	5	STR	6.00	0.620	9- 1	114		
Bot slab (int)	A200 (AS3)	9	5	STR	8.00	0.465	9- 1	85		
Top slab (ext)	A300 (AS7)	12	5	STR	6.00	0.620	9- 1	114		
Bot slab (ext)	A400 (AS8)	9	5	STR	8.00	0.465	9- 1	85		
Corner (Top)	A1 (AS1)	24	5	L-BAR	6.00	0.620	6- 8	167	3- 4	3- 4
Corner (Bottom)	A2 (AS1)	18	5	L-BAR	8.00	0.465	6- 3	117	2-10	3- 5
Ext wall (int)	B1 (AS4)	18	5	STR	8.00	0.465	4- 6	84		
Ext wall (ext)	B2 (AS1)	18	5	STR	8.00	0.465	4- 0	75		
Top slab (int- 1)	C100 (AS5)	13	5	STR	8.00	0.465	5- 8	77		
Bot slab (int- 1)	C200	13	5	STR	8.00	0.465	5- 8	77		
Temperature (1)	C1 (AS6)	14	5	STR	8.00	0.465	5- 8	83		
Temperature (1)	C1 (AS6)	14	5	STR	8.00	0.465	5- 8	83		
Temperature (1)	C1 (AS6)	16	5	STR	8.00	0.465	5- 8	95		
Temperature (1)	C1 (AS6)	16	5	STR	8.00	0.465	5- 8	95		
Total								1350		

Note: A denotes flexural steel, B denotes vertical steel, C denotes longitudinal steel

AS Bar Marks

Location	As prv in2/ft
Transverse Side Wall - Outside Face (AS1)	0.620
Transverse Top Slab - Inside Face (AS2)	0.620
Transverse Bottom Slab - Inside Face (AS3)	0.465
Transverse Side Wall - Inside Face (AS4)	0.465
Distribution Top Slab - Inside Face (AS5)	0.465
Distribution Top Slab - Outside Face (AS6)	0.465
Transverse Top Slab - Outside Face (AS7)	0.620
Transverse Bottom Slab - Outside Face (AS8)	0.465

Notes: 1.) Final areas of steel provided must be checked in analysis mode