

Job Name: 25-4677 - 870550 Murray State University  
 Job Location: Murray, KY  
 Contractor: Contech Engineering Solutions

Plant: Beaver Dam

12/11/2025 11:07:48 AM

Tech: J. Coppage

PC: T. Sekula



**Structure ID: 10-CS-4**

**P3 MH048LD12-30**

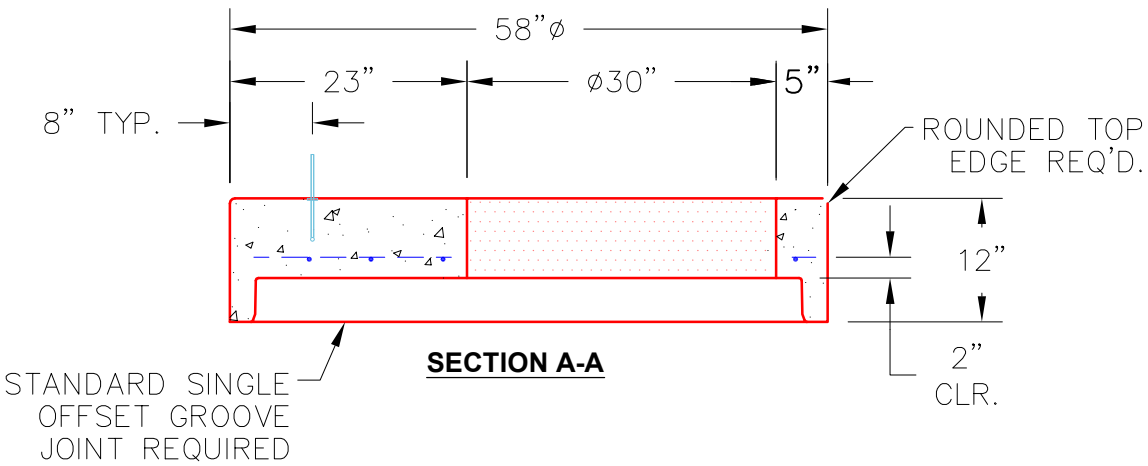
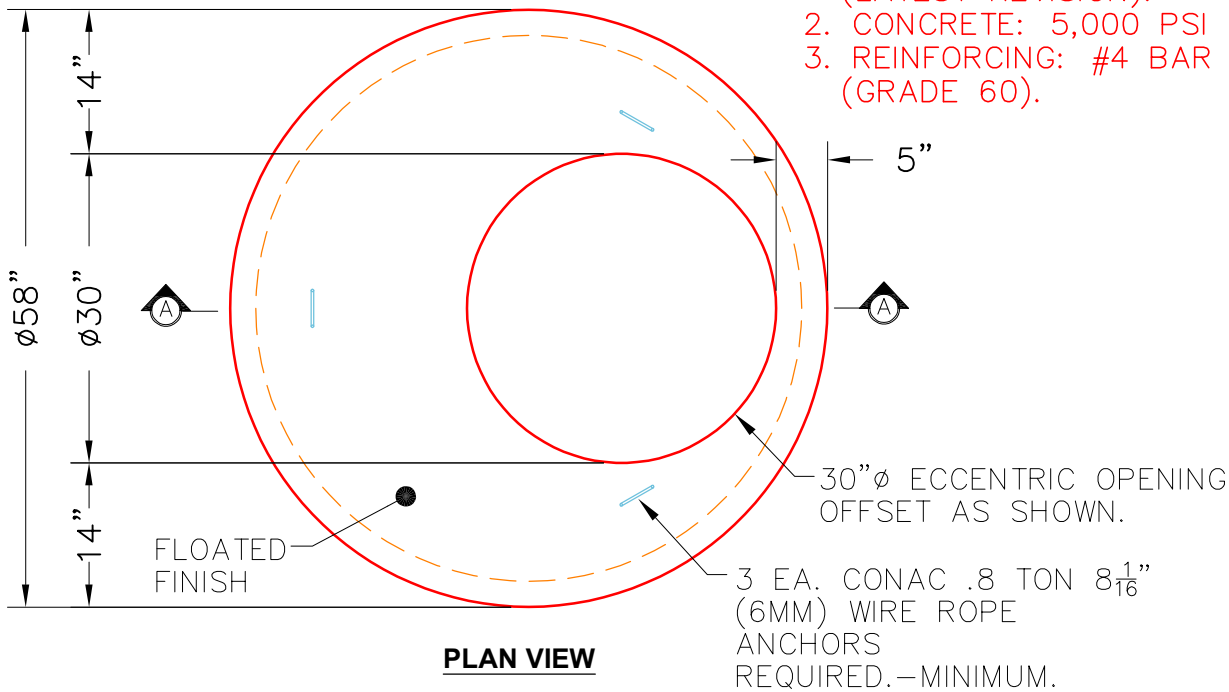
**MH FLAT LID w/30in ECC Hole**

- P4) 30" - CASTING HEIGHT - 4"
- P3) 48" - MH FLAT LID w/30in ECC Hole - 12"
- P2) 48" - MH RISER NO STEPS - 60"
- P1) 48" - MH BASE - 18"
- 1) ASSEMBLY REQUIRED
- 1) CVSTENCILING
- 2) 48" - Conseal CS-102 1.00"
- 1) Hole - 24
- 1) Hole - 20

0 lb Structure Notes:  
 1413 lb (4" TALL CASTING PROVIDED BY OTHERS)  
 3859 lb  
 2588 lb LIFTING ANCHORS TO BE INSTALLED  
 0 lb ON THE OUTSIDE OF THE STRUCTURE  
 0 lb  
 0 lb ICAST TO INSTALL THE INTERNALS  
 0 lb  
 0 lb  
 0 lb  
 Structure Total: 7860 lb CONTECH'S LOGO AS WELL AS THE  
 INTELT AND OUTLET MUST BE  
 STENCILED ONTO THE STRUCTURE

**NOTES:**

1. MANUFACTURED TO ASTM C-478 (LATEST REVISION).
2. CONCRETE: 5,000 PSI AT 28 DAYS.
3. REINFORCING: #4 BAR @ 10" O.C. E.W. (GRADE 60).



Coating (Int): Coating (Ext):	Seam Up: Flat Seam Dn: Groove	Wall Thickness: 5"	Height (Ext): 12"	Weight (Net): 1413 lb Volume (Net): 0.36cu.yd
----------------------------------	----------------------------------	--------------------	-------------------	--