

Job Name: 25-4676 GH-24-01049008 WKU Field House
 Job Location: Bowling Green, KY
 Contractor: Scott & Ritter, Inc.

Plant: Beaver Dam

Tech: J. Coppage

12/5/2025 10:44:52 AM

PC: C. Goff



Structure ID: WKU Vault Slab

P1 BX060120-08LD06SP

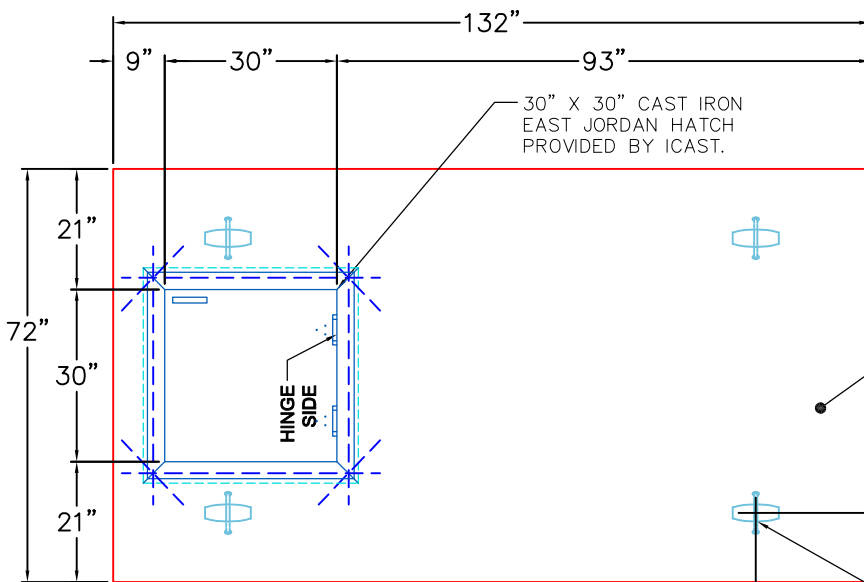
BX FLAT LID 6inW w/30"x30" HOLE

P1) 60" x 120" - BX FLAT LID 6inW w/30"x30" HOLE - 8"
 1) This Structure Includes a Cast-in Item

5776 lb

 0 lb
 Structure Total: 5776 lb

Structure Notes:
 1. PER ASTM C913 SPECIFICATIONS.
 2. CONCRETE = 4,000 PSI AT 28 DAYS.
 3. NO INVERT CHANNEL.
 4. REINFORCING PER ASTM A615 (GRADE 60).
 - TOP SLAB (As .62) #5 BARS AT 4" C.C.E.W.



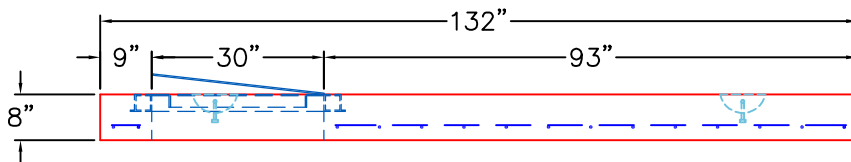
TOP VIEW

NOTES:

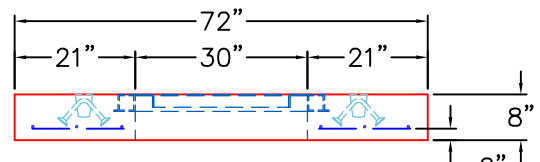
1. MANUFACTURED TO ASTM C-913 (LATEST REVISION).
2. CONCRETE: 5,000 PSI AT 28 DAYS.
3. HIGH EARLY MIX REQUIRED.
4. REINFORCING: HS-20 LOADING #5 BAR @ 4" C/C E.W. (GRADE 60).
 ADDITIONAL REINFORCEMENT AROUND HATCH.
5. VAULT JOINT TO BE SEALED WITH CS-102. ROLL BUTYL MASTIC (SUPPLIED BY ICAST).
6. EAST JORDAN 30" X 30" CAST IRON HATCH (SUPPLIED BY ICAST)
7. HATCH TO BE CAST INTO THE TOP SLAB
8. WEIGHT: 5,776 LBS.

TOP SURFACE TO HAVE LIGHT BROOM FINISH

12" TYP.
 20" TYP.
 4 EA. CONAC 5CA14 ANCHORS CAST IN VAULT LID FOR PLANT & FIELD HANDLING.



FRONT VIEW



RIGHT VIEW

2" CLR. MIN.

Coating (Int):
 Coating (Ext):

Seam Up: Flat
 Seam Dn: Flat

Wall Thickness: 6"

Height (Ext): 8"

Weight (Net): 5776 lb
 Volume (Net): 1.48cu.yd