

Job Name: 25-4674 TMMI Maverick SW3 & 4
 Job Location: Georgetown, KY
 Contractor: Aristeo Contracting

Plant: Beaver Dam
 4/10/2026 2:02:32 PM

Tech: S. Felletter
 PC: E. Bradley



Structure ID: YD305A (12)

P2 MH072LD10-24ECC

MH FLAT LID w/24in ECC Hole F/F

- P3) 24" - CASTING HEIGHT - 7"
- P2) 72" - MH FLAT LID w/24in ECC Hole F/F - 10"
- P1) 72" - MH BASE F/n - 84"
- 1) CASTING - HOE MCB-375-B F/Bar Grt
- 1) 72" - Hamilton Kent MH Gasket
- 1) Hole - 56
- 1) Hole - 8
- 5) MH Step ML-10-TDS-NCR - 10"

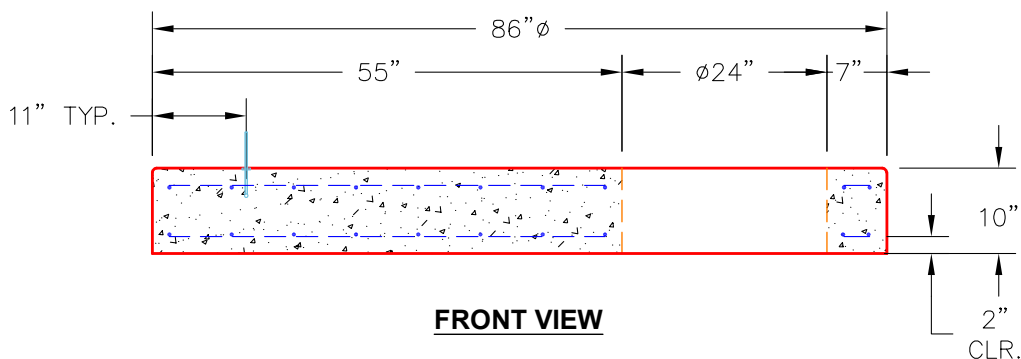
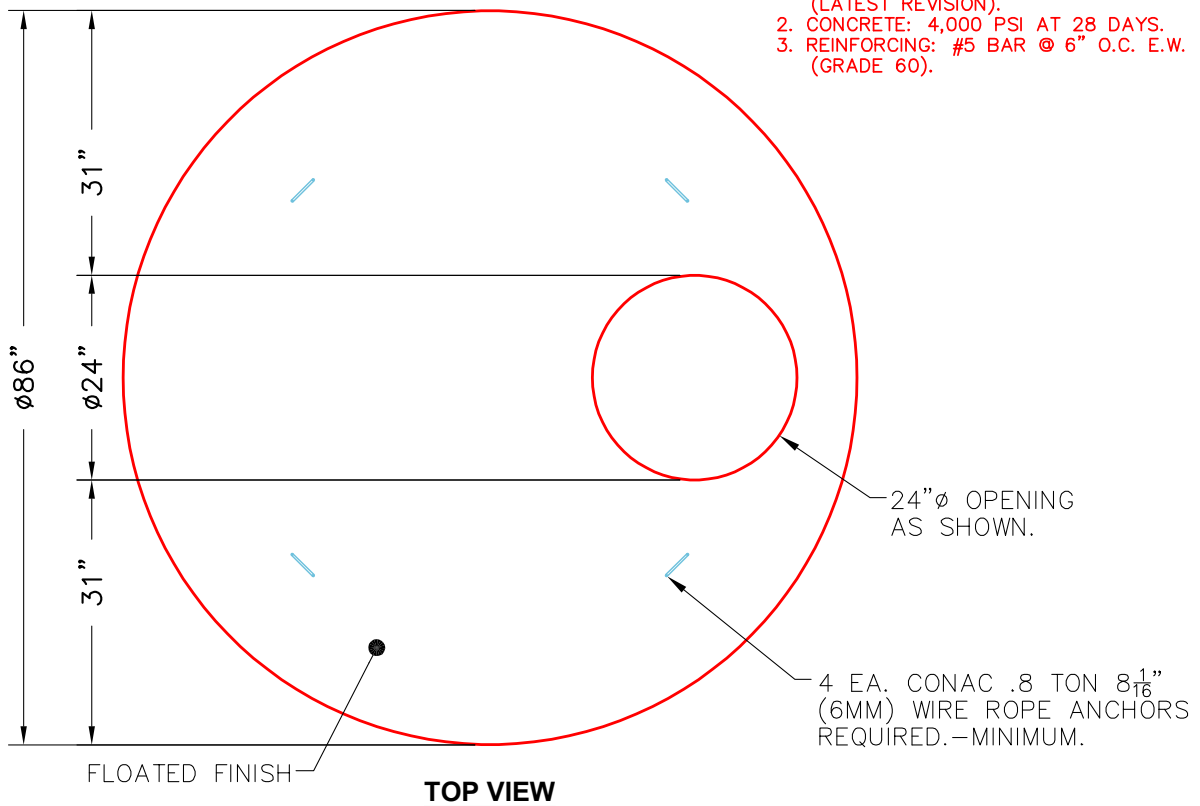
0 lb
 4495 lb
 14499 lb
 250 lb
 0 lb
 0 lb
 0 lb
 0 lb
 0 lb
 Structure Total: 19244 lb

Structure Notes:
 1. PER ASTM C913 SPECIFICATIONS.
 2. CONCRETE = 5,000 PSI AT 28 DAYS.
 3. CASTING HOE MCB-375-BH BY ICAST.

REINFORCING PER ASTM A615 (GRADE 60).
 - TOP SLAB (As .62) #5 BARS AT 6" C.C.E.W.
 - WALLS (As .47) #5 BARS AT 8" C.C.E.W.
 - FLOOR (As .47) #5 BARS AT 8" C.C.E.W.

NOTES:

- 1. MANUFACTURED TO ASTM C-478 (LATEST REVISION).
- 2. CONCRETE: 4,000 PSI AT 28 DAYS.
- 3. REINFORCING: #5 BAR @ 6" O.C. E.W. (GRADE 60).



Coating (Int): Coating (Ext):	Seam Up: Flat Seam Dn: Flat	Wall Thickness: 7"	Height (Ext): 10"	Weight (Net): 4495 lb Volume (Net): 1.15cu.yd
----------------------------------	--------------------------------	--------------------	-------------------	--