

Job Name: 25-4674 TMMI Maverick SW3 & 4
 Job Location: Georgetown, KY
 Contractor: Aristeo Contracting

Plant: Beaver Dam
 3/2/2026 3:14:28 PM

Tech: S. Felletter
 PC: E. Bradley



Structure ID: YD305 (3)

P2 MH072LD15-24ECC

MH FLAT LID w/24in ECC Hole F/G

- P3) 24" - CASTING HEIGHT - 7"
- P2) 72" - MH FLAT LID w/24in ECC Hole F/G - 15"
- P1) 72" - MH BASE T/n - 84"
- 1) CASTING - HOE MCB-375-BH Beehive Grt
- 1) 72" - Hamilton Kent MH Gasket
- 1) Hole - 56
- 1) Hole - 8
- 5) MH Step ML-10-TDS-NCR - 10"

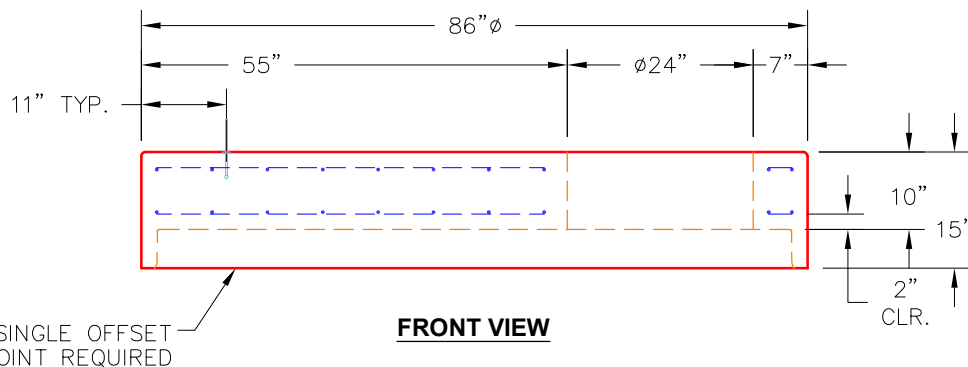
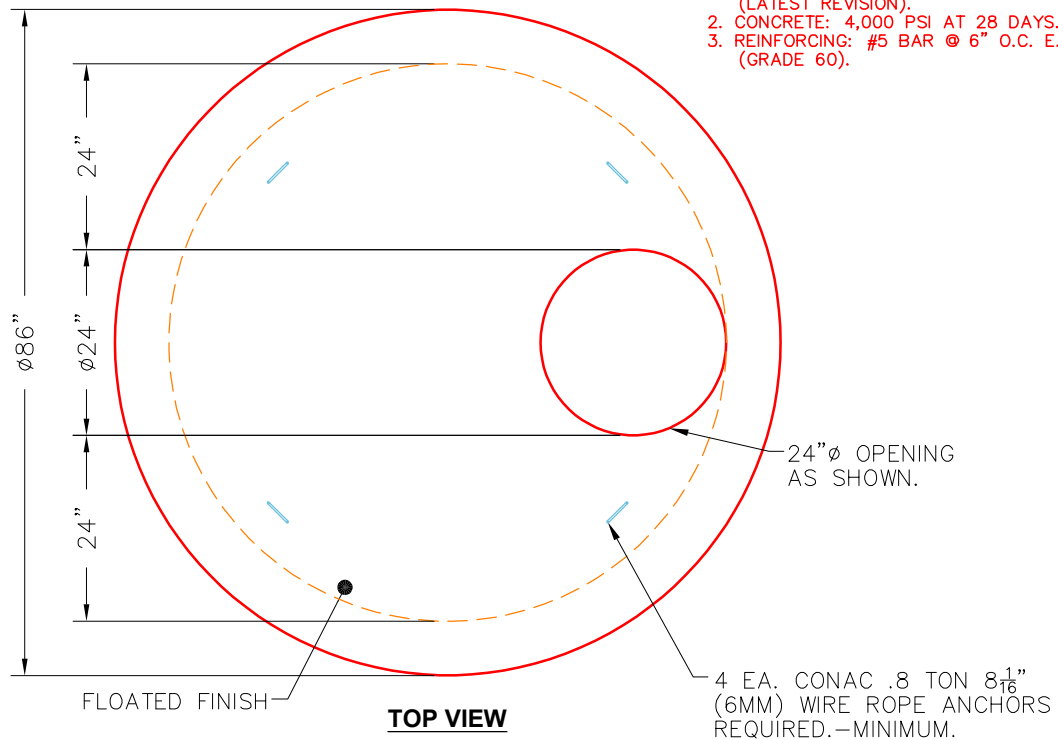
0 lb
 5098 lb
 14499 lb
 250 lb
 0 lb
 0 lb
 0 lb
 0 lb
 0 lb
 Structure Total: 19847 lb

Structure Notes:
 1. PER ASTM C913 SPECIFICATIONS.
 2. CONCRETE = 5,000 PSI AT 28 DAYS.
 3. CASTING HOE MCB-375-BH BY ICAST.

REINFORCING PER ASTM A615 (GRADE 60).
 - TOP SLAB (As .62) #5 BARS AT 6" C.C.E.W.
 - WALLS (As .47) #5 BARS AT 8" C.C.E.W.
 - FLOOR (As .47) #5 BARS AT 8" C.C.E.W.

NOTES:

- 1. MANUFACTURED TO ASTM C-478 (LATEST REVISION).
- 2. CONCRETE: 4,000 PSI AT 28 DAYS.
- 3. REINFORCING: #5 BAR @ 6" O.C. E.W. (GRADE 60).



Coating (Int):
 Coating (Ext):

Seam Up: Flat
 Seam Dn: Groove

Wall Thickness: 7"

Height (Ext): 15"

Weight (Net): 5098 lb
 Volume (Net): 1.3cu.yd