

Job Name: 25-4674 TMMI Maverick SW3 & 4
 Job Location: Georgetown, KY
 Contractor: Aristeo Contracting

Plant: Beaver Dam
 3/3/2026 2:30:54 PM

Tech: S. Felletter
 PC: E. Bradley



Structure ID: YD300 (2)

P4 MH096LD12ECC

MH FLAT TOP w/ 24" ECC Hole F/F

- P5) 24" - CASTING HEIGHT - 7"
- P4) 96" - MH FLAT TOP w/ 24" ECC Hole F/F - 12"
- P3) 96" - MH RISER F/G - 96"
- P2) 96" - MH RISER Custom Ht T/G - 91"
- P1) 96" - MH BASE Custom Ht T/n - 88"
- 1) CASTING - HOE MCB-375-BH Beehive Grt
- 3) 96" - Hamilton Kent MH Gasket
- 1) Hole - 76
- 1) Hole - 44
- 1) Hole - 56
- 1) Hole - 8
- 21) MH Step ML-10-TDS-NCR - 10"

0 lb
 9821 lb
 20726 lb
 22528 lb
 25064 lb
 250 lb
 0 lb
 0 lb
 0 lb
 0 lb
 0 lb
 0 lb
 0 lb

 Structure Total: 78390 lb

Structure Notes:

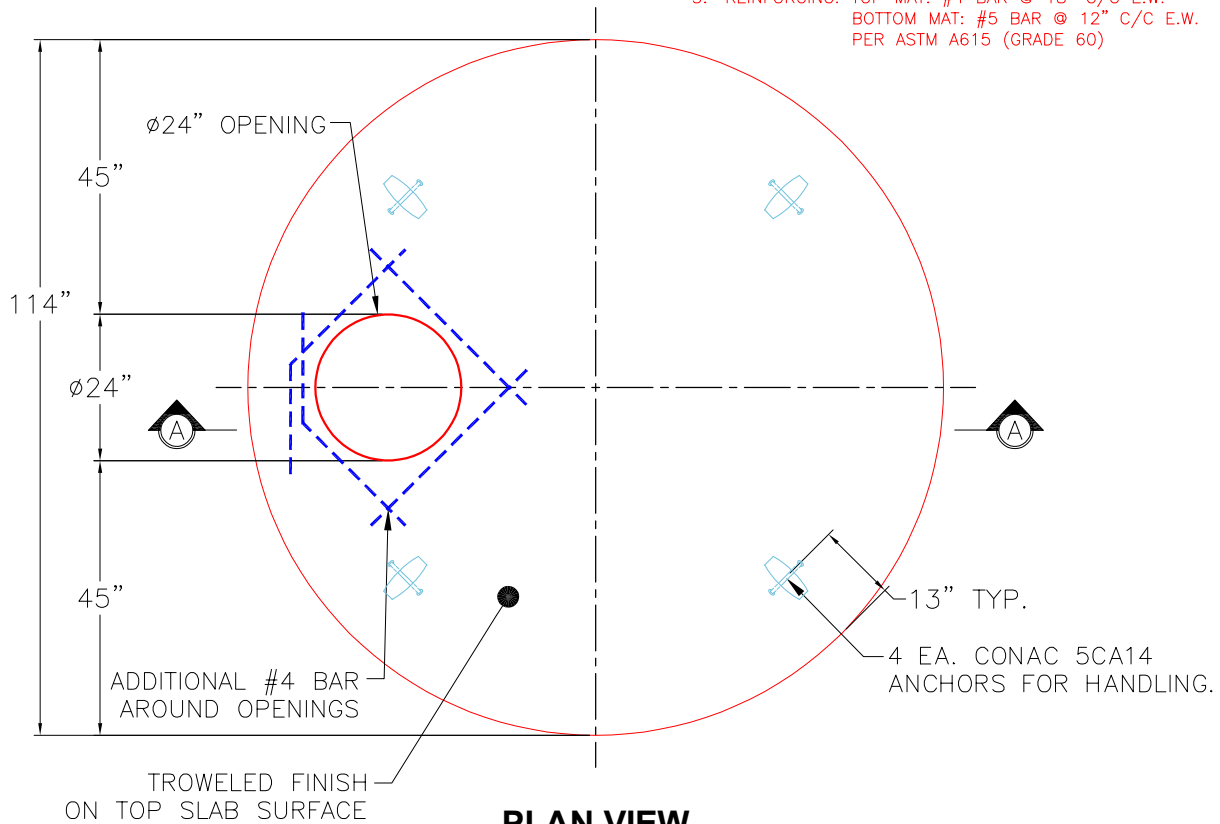
1. PER ASTM C478 SPECIFICATIONS.
2. CONCRETE = 4,000 PSI AT 28 DAYS.
3. CASTING HOE MCB-375-BH BY ICAST.

REINFORCING PER ASTM A615 (GRADE 60).

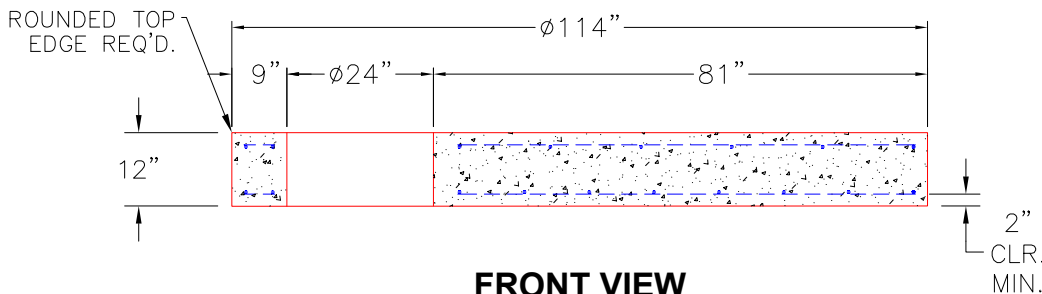
- TOP SLAB (As .62) #5 BARS AT 6" C.C.E.W.
- RISER/WALLS (As .24)
- FLOOR (As .47) #5 BARS AT 8" C.C.E.W.

GENERAL NOTES:

1. MANUFACTURED TO ASTM C-478 (LATEST REVISION).
2. CONCRETE 5,000 PSI AT 28 DAYS.
3. REINFORCING: TOP MAT: #4 BAR @ 18" C/C E.W.
 BOTTOM MAT: #5 BAR @ 12" C/C E.W.
 PER ASTM A615 (GRADE 60)



PLAN VIEW



FRONT VIEW

Coating (Int):
 Coating (Ext):

Seam Up: Flat
 Seam Dn: Flat

Wall Thickness: 9"

Height (Ext): 12"

Weight (Net): 9821 lb
 Volume (Net): 2.51cu.yd