

Job Name: 25-4674 TMMI Maverick SW3 & 4
 Job Location: Georgetown, KY
 Contractor: Aristeo Contracting

Plant: Beaver Dam
 3/3/2026 2:30:38 PM

Tech: S. Felletter
 PC: E. Bradley



Structure ID: YD300 (2)

P1 MH096BAVF

MH BASE Custom Ht T/n

- P5) 24" - CASTING HEIGHT - 7"
- P4) 96" - MH FLAT TOP w/ 24" ECC Hole F/F - 12"
- P3) 96" - MH RISER F/G - 96"
- P2) 96" - MH RISER Custom Ht T/G - 91"
- P1) 96" - MH BASE Custom Ht T/n - 88"
- 1) CASTING - HOE MCB-375-BH Beehive Grt
- 3) 96" - Hamilton Kent MH Gasket
- 1) Hole - 76
- 1) Hole - 44
- 1) Hole - 56
- 1) Hole - 8
- 21) MH Step ML-10-TDS-NCR - 10"

0 lb
 9821 lb
 20726 lb
 22528 lb
 25064 lb
 250 lb
 0 lb
 0 lb
 0 lb
 0 lb
 0 lb
 0 lb
 0 lb

 Structure Total: 78390 lb

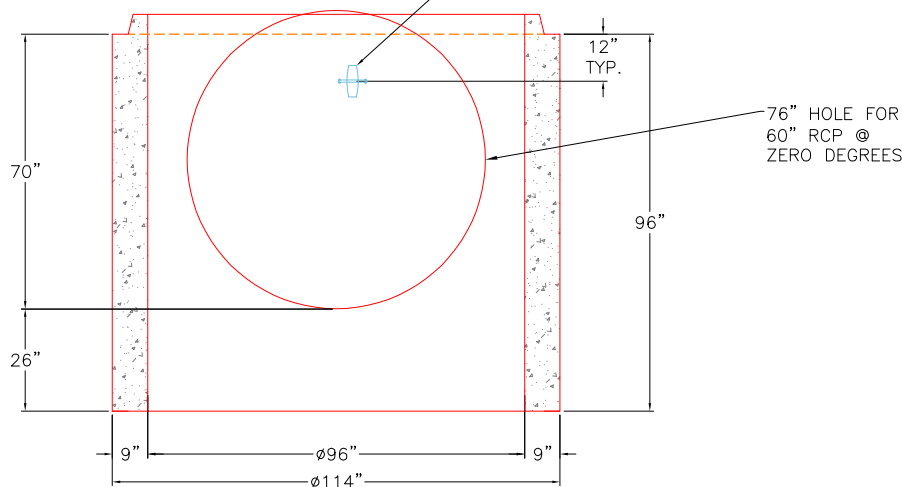
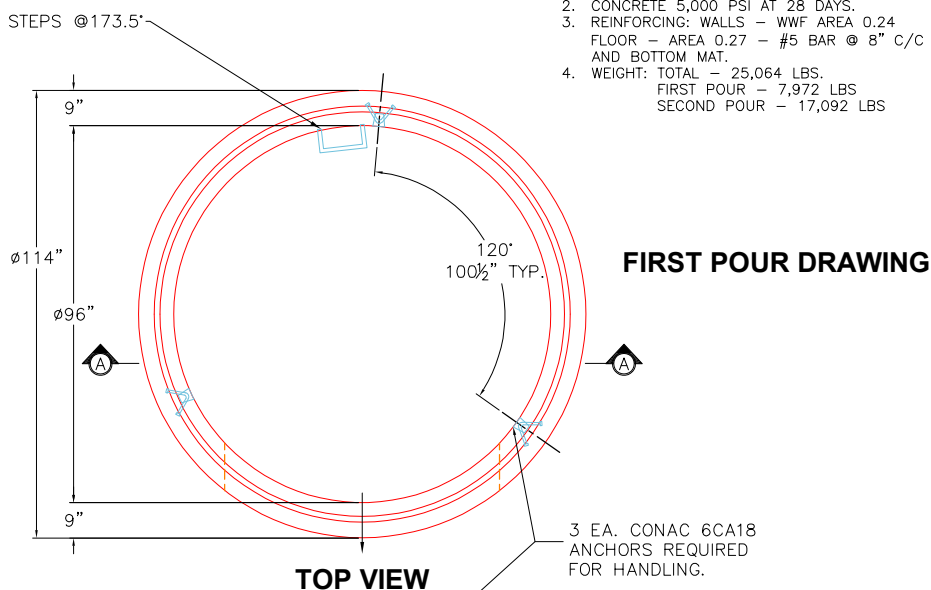
Structure Notes:
 1. PER ASTM C478 SPECIFICATIONS.
 2. CONCRETE = 4,000 PSI AT 28 DAYS.
 3. CASTING HOE MCB-375-BH BY ICAST.

 REINFORCING PER ASTM A615 (GRADE 60).
 - TOP SLAB (As .62) #5 BARS AT 6" C.C.E.W.
 - RISER/WALLS (As .24)
 - FLOOR (As .47) #5 BARS AT 8" C.C.E.W.

Rim: 901.5' Rim to Invert: 22.52' Slack: 0.24" Sump: 24" Step Position: 173.5°

GENERAL NOTES:

1. MANUFACTURED TO ASTM C-478 (LATEST REVISION).
2. CONCRETE 5,000 PSI AT 28 DAYS.
3. REINFORCING: WALLS - WWF AREA 0.24
 FLOOR - AREA 0.27 - #5 BAR @ 8" C/C TOP AND BOTTOM MAT.
4. WEIGHT: TOTAL - 25,064 LBS.
 FIRST POUR - 7,972 LBS
 SECOND POUR - 17,092 LBS



Coating (Int):
 Coating (Ext):

Seam Up: Tongue
 Seam Dn: n/a

Wall Thickness: 9"
 Floor Height: 8"

Height (Int): 88"
 Height (Ext): 96"

Weight (Net): 25064 lb
 Volume (Net): 6.4cu.yd

