

Job Name: 25-4674 TMMI Maverick SW3 & 4
 Job Location: Georgetown, KY
 Contractor: Aristeo Contracting

Plant: Beaver Dam
 3/5/2026 2:10:44 PM

Tech: S. Felletter
 PC: E. Bradley



Structure ID: OCS (11)

P1 BX3636-08BAVF-EB

BX BASE w/FLANGE 08W/08F/08EF T/n

- P3) 36" x 36" - CASTING HEIGHT - 0"
- P2) 36" x 36" - BOX RISER 8inW, Variable Ht F/G - 37"
- P1) 36" x 36" - BX BASE w/FLANGE 08W/08F/08EF T/n - 32"
- 1) CASTING - TRASHRACKS LFS-3636-P SQ. Flush Mount Grate
- 2) 36" x 36" - Conseal CS-102 1.00"
- 1) Hole - 32
- 2) Hole - 8
- 1) Weir n/n - 24"x15"
- 1) Weir n/n - 24"x10"

0 lb
 3969 lb
 6277 lb
 195 lb
 0 lb
 0 lb
 0 lb
 0 lb
 0 lb
 0 lb

Structure Total: 10441 lb

- Structure Notes:**
1. PER ASTM C913 SPECIFICATIONS.
 2. CONCRETE = 5,000 PSI AT 28 DAYS.
 3. CASTING BY ICAST (LFS-36 TRASH RACK).

REINFORCING PER ASTM A615 (GRADE 60).
 - WALLS (As .47) #5 BARS AT 8" C.C.E.W.
 - FLOOR (As .47) #5 BARS AT 8" C.C.E.W.

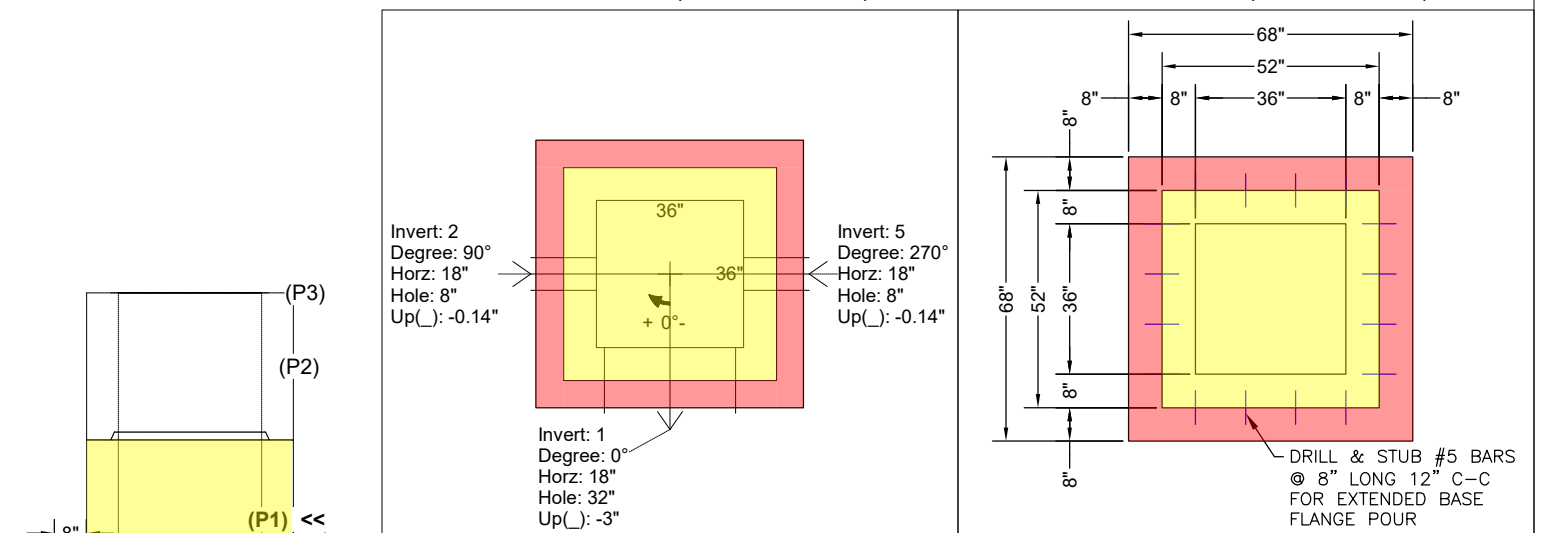
FIRST POUR DRAWING WEIGHTS:
FIRST POUR: 5,310 LBS
SECOND POUR: 967 LBS
TOTAL: 6277 LBS

Rim: 861.25' Rim to Invert: 5.75' Slack: -0.002" Sump: 0" Step Position:

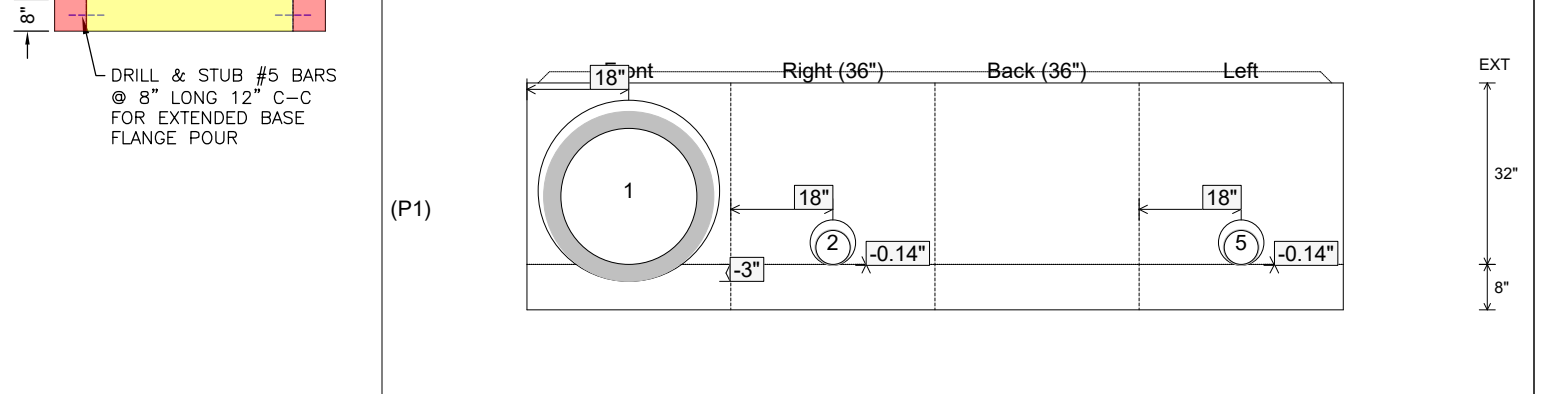
Position	Elev	Angle	Ext. (cw)	Pipe	Pipe OD	Connector	Hole	Horz Size	Up ()	Offset
Invert 1	855.5'	0°	26"	24" RCP B WALL	30"	Hole 32	32"	32"	-3"	0"
Invert 2	855.5'	90°	26"	6" PVC PERF	6.28"	Hole 8	8"	8"	-0.14"	0"
Invert 3										
Invert 4										
Invert 5	855.5'	270°	26"	6" PVC PERF	6.28"	Hole 8	8"	8"	-0.14"	0"
Invert 6										
Invert 7										
Invert 8										

RIGHT-SIDE UP VIEW (int. dimensions)

UPSIDE-DOWN VIEW (int. dimensions)



INSIDE WALL DIMENSIONS

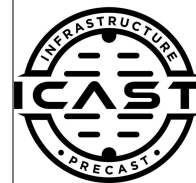


Coating (Int): Coating (Ext):	Seam Up: Tongue Seam Dn: n/a	Wall Thickness: 8" Floor Height: 8"	Height (Int): 32" Height (Ext): 40"	Weight (Net): 6277 lb Volume (Net): 1.6cu.yd
----------------------------------	---------------------------------	--	--	---

Job Name: 25-4674 TMMI Maverick SW3 & 4
 Job Location: Georgetown, KY
 Contractor: Aristeo Contracting

Plant: Beaver Dam
 3/5/2026 2:10:44 PM

Tech: S. Felletter
 PC: E. Bradley



Structure ID: OCS (11)

P1 BX3636-08BAVF-EB

BX BASE w/FLANGE 08W/08F/08EF T/n

- P3) 36" x 36" - CASTING HEIGHT - 0"
- P2) 36" x 36" - BOX RISER 8inW, Variable Ht F/G - 37"
- P1) 36" x 36" - BX BASE w/FLANGE 08W/08F/08EF T/n - 32"
- 1) CASTING - TRASHRACKS LFS-3636-P SQ. Flush Mount Grate
- 2) 36" x 36" - Conseal CS-102 1.00"
- 1) Hole - 32
- 2) Hole - 8
- 1) Weir n/n - 24"x15"
- 1) Weir n/n - 24"x10"

0 lb
 3969 lb
 6277 lb
 195 lb
 0 lb
 0 lb
 0 lb
 0 lb
 0 lb
 0 lb

Structure Total: 10441 lb

- Structure Notes:**
1. PER ASTM C913 SPECIFICATIONS.
 2. CONCRETE = 5,000 PSI AT 28 DAYS.
 3. CASTING BY ICAST (LFS-36 TRASH RACK).

REINFORCING PER ASTM A615 (GRADE 60).
 - WALLS (As .47) #5 BARS AT 8" C.C.E.W.
 - FLOOR (As .47) #5 BARS AT 8" C.C.E.W.

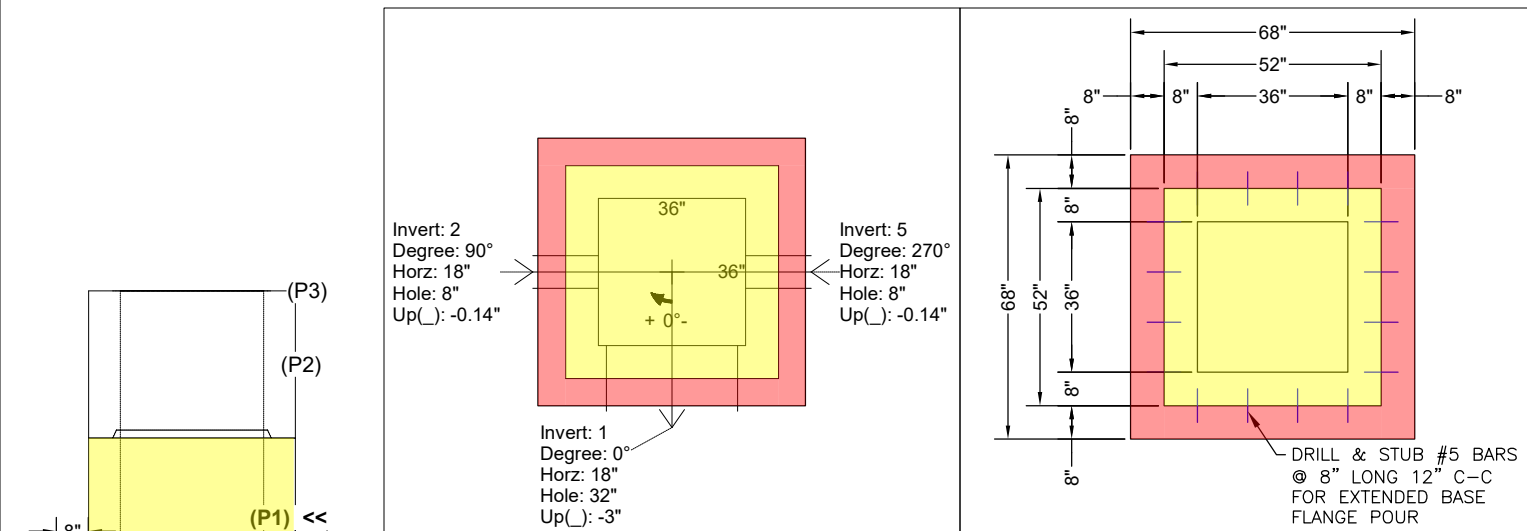
SECOND POUR DRAWING
WEIGHTS:
FIRST POUR: 5,310 LBS
SECOND POUR: 967 LBS
TOTAL: 6277 LBS

Rim: 861.25' Rim to Invert: 5.75' Slack: -0.002" Sump: 0" Step Position:

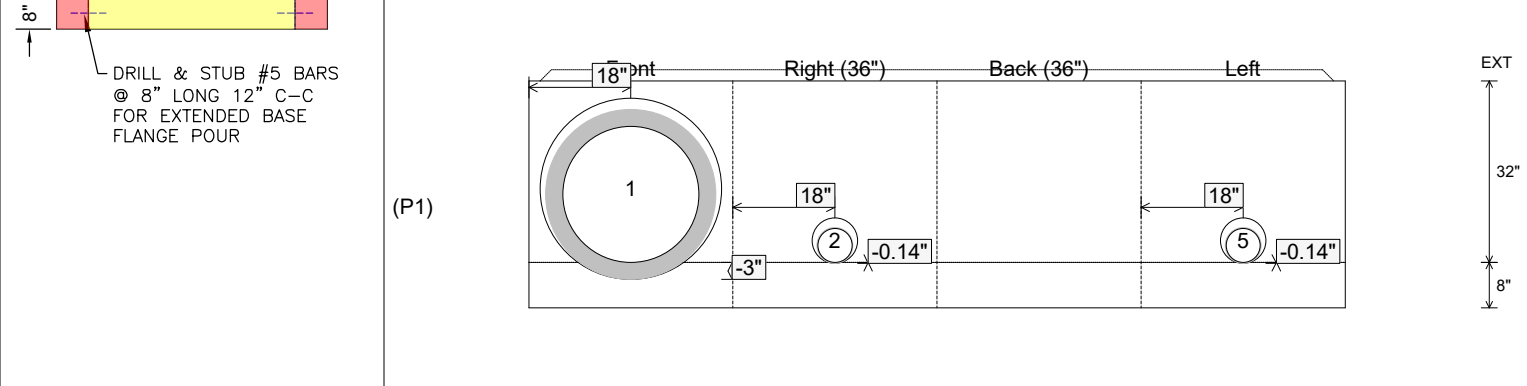
Position	Elev	Angle	Ext. (cw)	Pipe	Pipe OD	Connector	Hole	Horz Size	Up ()	Offset
Invert 1	855.5'	0°	26"	24" RCP B WALL	30"	Hole 32	32"	32"	-3"	0"
Invert 2	855.5'	90°	26"	6" PVC PERF	6.28"	Hole 8	8"	8"	-0.14"	0"
Invert 3										
Invert 4										
Invert 5	855.5'	270°	26"	6" PVC PERF	6.28"	Hole 8	8"	8"	-0.14"	0"
Invert 6										
Invert 7										
Invert 8										

RIGHT-SIDE UP VIEW (int. dimensions)

UPSIDE-DOWN VIEW (int. dimensions)



INSIDE WALL DIMENSIONS



Coating (Int): Coating (Ext):	Seam Up: Tongue Seam Dn: n/a	Wall Thickness: 8" Floor Height: 8"	Height (Int): 32" Height (Ext): 40"	Weight (Net): 6277 lb Volume (Net): 1.6cu.yd
----------------------------------	---------------------------------	--	--	---