

Job Name: 25-4674 TMMI Maverick SW3 & 4  
 Job Location: Georgetown, KY  
 Contractor: Aristeo Contracting

Plant: Beaver Dam  
 3/2/2026 3:14:32 PM

Tech: S. Felletter  
 PC: E. Bradley



**Structure ID: CB501 (8)**

**P2 MH048LD07ECC**

**MH FLAT LID w/24in ECC Hole F/F**

- P3) 24" - CASTING HEIGHT - 7"
- P2) 48" - MH FLAT LID w/24in ECC Hole F/F - 7"
- P1) 48" - MH BASE F/n - 60"
- 1) CASTING - HOE MCB-375-B F/Bar Grt
- 1) 48" - Hamilton Kent MH Gasket
- 1) Hole - 24
- 1) Hole - 8
- 3) MH Step ML-10-TDS-NCR - 10"

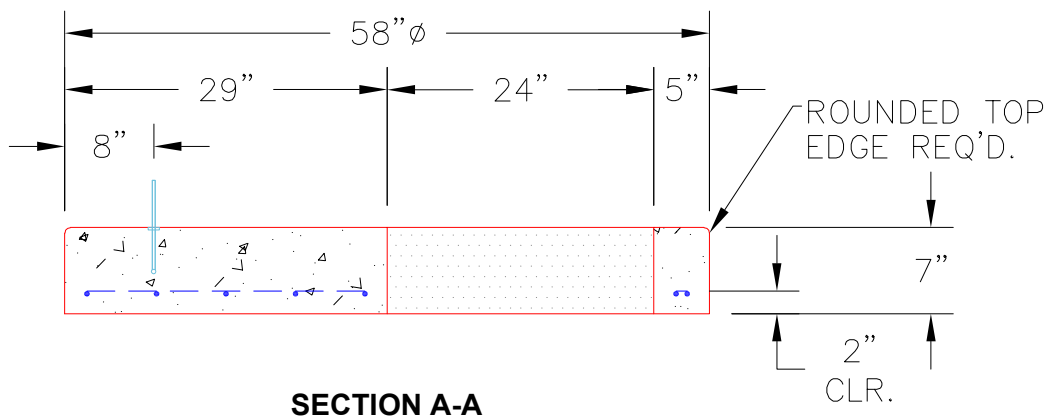
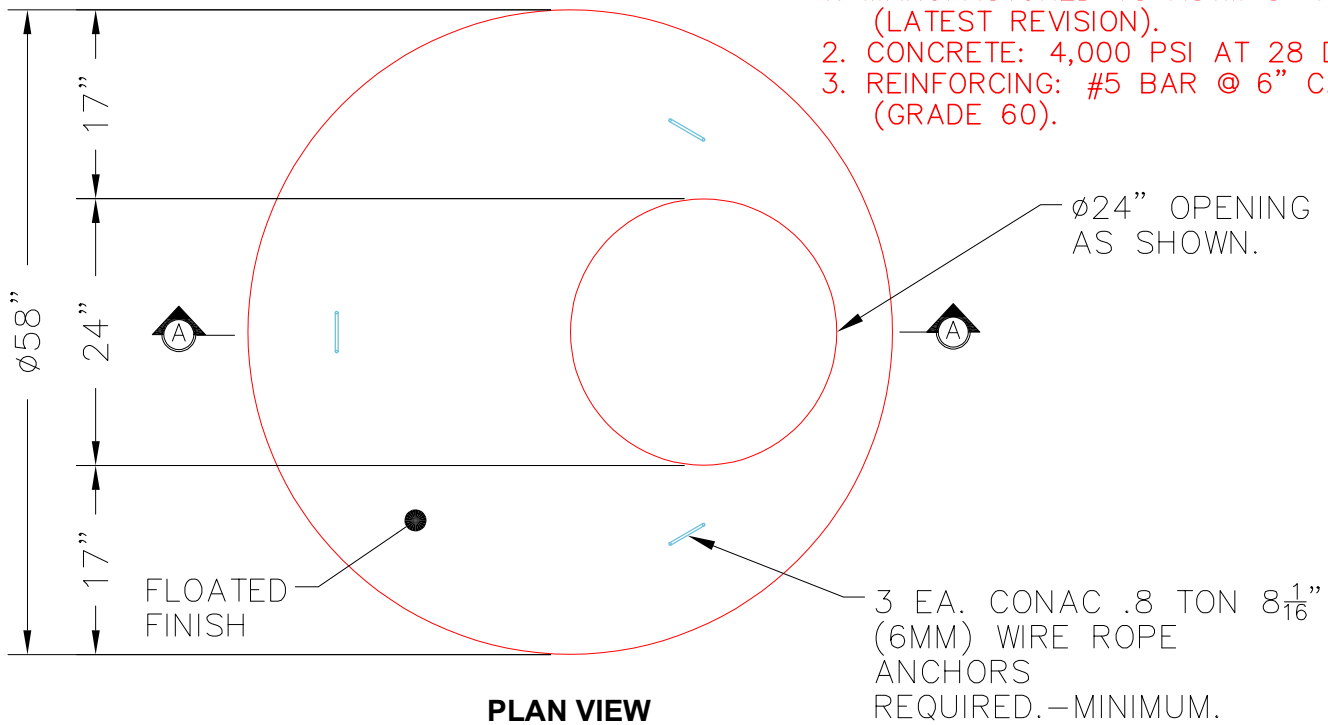
0 lb  
 1286 lb  
 5303 lb  
 250 lb  
 0 lb  
 0 lb  
 0 lb  
 0 lb  
 0 lb  
 -----  
 Structure Total: 6840 lb

Structure Notes:  
 1. PER ASTM C478 SPECIFICATIONS.  
 2. CONCRETE = 4,000 PSI AT 28 DAYS.  
 3. CASTING HOE MCB-375-B BY ICAST.

REINFORCING PER ASTM A615 (GRADE 60).  
 - TOP SLAB (As .62) #5 BARS AT 6" C.C.E.W..  
 - RISER/WALLS (As .12)  
 - FLOOR (As .31) #5 BARS AT 12" C.C.E.W.

NOTES:

1. MANUFACTURED TO ASTM C-478 (LATEST REVISION).
2. CONCRETE: 4,000 PSI AT 28 DAYS.
3. REINFORCING: #5 BAR @ 6" C.C. E.W. (GRADE 60).



Coating (Int):  
 Coating (Ext):

Seam Up: Flat  
 Seam Dn: Flat

Wall Thickness: 5"

Height (Ext): 7"

Weight (Net): 1286 lb  
 Volume (Net): 0.33cu.yd