

Job Name: 25-4674 TMMI Maverick SW3 & 4
 Job Location: Georgetown, KY
 Contractor: Aristeo Contracting

Plant: Beaver Dam
 3/2/2026 3:14:31 PM

Tech: S. Felletter
 PC: E. Bradley



Structure ID: CB315 (7)

P3 MH060LD13

MH FLAT TOP w/ 24" ECC Hole F/G

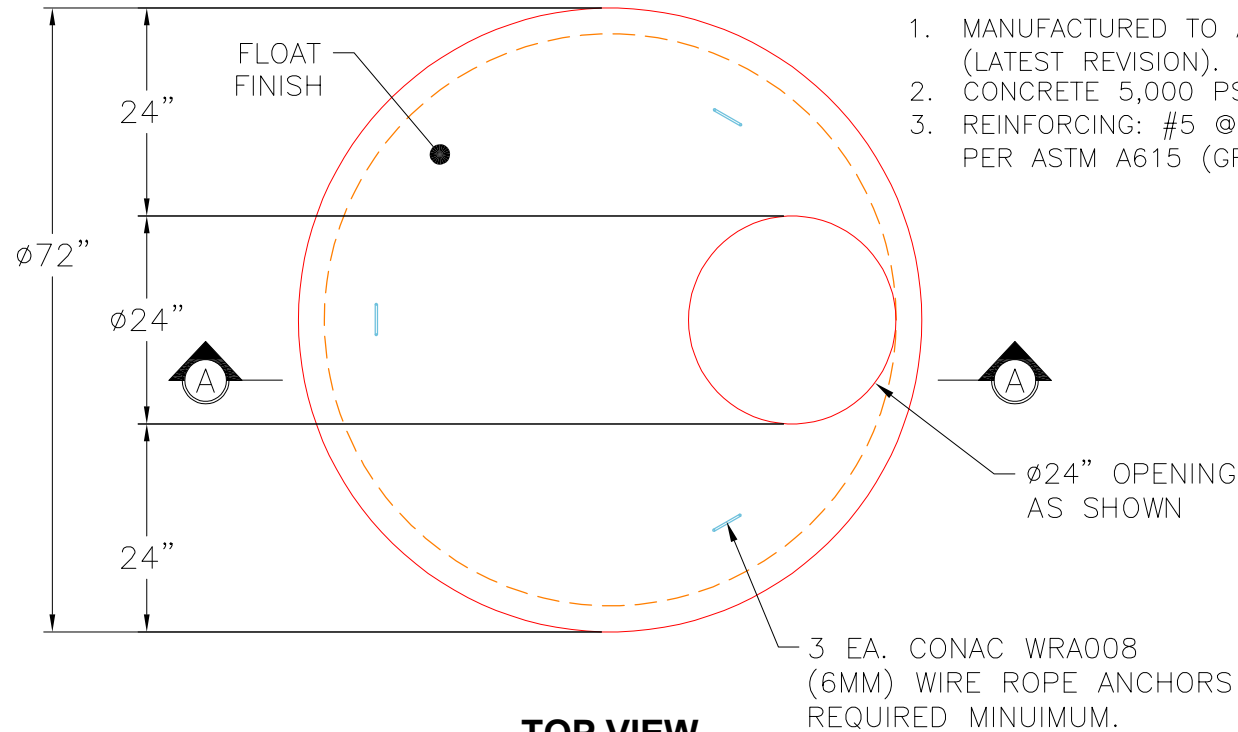
- P4) 24" - CASTING HEIGHT - 7"
- P3) 60" - MH FLAT TOP w/ 24" ECC Hole F/G - 13"
- P2) 60" - MH RISER T/G - 60"
- P1) 60" - MH BASE Custom Ht T/n - 70"
- 1) CASTING - HOE MCB-375-B F/Bar Grt
- 2) 60" - Hamilton Kent MH Gasket
- 1) Hole - 44
- 1) Hole - 30
- 1) Hole - 8
- 9) MH Step ML-10-TDS-NCR - 10"

0 lb
 2869 lb
 5868 lb
 9199 lb
 250 lb
 0 lb
 0 lb
 0 lb
 0 lb
 0 lb

 Structure Total: 18186 lb

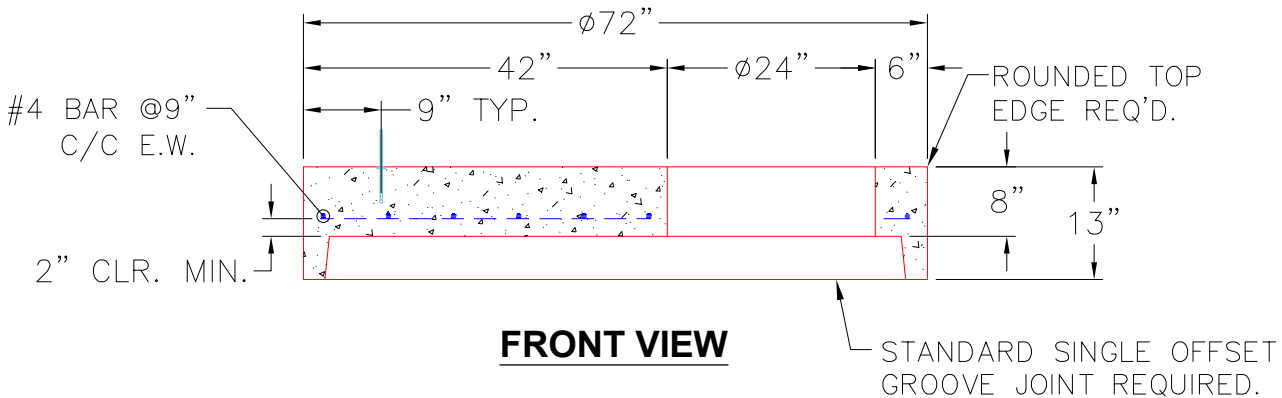
Structure Notes:
 1. PER ASTM C478 SPECIFICATIONS.
 2. CONCRETE = 4,000 PSI AT 28 DAYS.
 3. CASTING HOE MCB-375-B BY ICAST.

REINFORCING PER ASTM A615 (GRADE 60).
 - TOP SLAB (As .62) #5 BARS AT 6" C.C.E.W..
 - RISER/WALLS (As .18)
 - FLOOR (As .37) #5 BARS AT 10" C.C.E.W.



GENERAL NOTES:

1. MANUFACTURED TO ASTM C-478 (LATEST REVISION).
2. CONCRETE 5,000 PSI AT 28 DAYS.
3. REINFORCING: #5 @ 6" C.C. E.W. PER ASTM A615 (GRADE 60)



Coating (Int): Coating (Ext):	Seam Up: Flat Seam Dn: Groove	Wall Thickness: 6"	Height (Ext): 13"	Weight (Net): 2869 lb Volume (Net): 0.73cu.yd
----------------------------------	----------------------------------	--------------------	-------------------	--