

Job Name: 25-4668 - Single Pressure Zone Project
 Job Location: La Grange, KY
 Contractor: Connhurst, LLC

Plant: 100

Tech: J. Horsley - A

2/20/2026 1:23:50 PM

PC: Erica Bradley



Structure ID: 54668 (4)

P2 BX072072-08TS-S

CB FLAT TOP 8"W w/36"X36 Hatch F/F

- P3) 36" x 36" - HATCH (CAST FLUSH) - 3"
- P2) 72" x 72" - CB FLAT TOP 8"W w/36"X36 Hatch F/F - 8"
- P1) 72" x 72" - BOX BASE 8inW, 8inF, Variable Ht F/n - 72"
- 1) HATCH (Alum.) - HALLIDAY H1W 36"x36"
- 1) This Structure Includes a Cast-in Item - Halliday H1W 36" x 36" Hatch
- 1) SPECIAL Pre-Assembly of Internal Material Required
- 1) SECONDARY POUR
- 1) 72" x 72" - Conseal CS-102 1.00" (Double)
- 1) 36" x 36" - Conseal CS-102 1.00" (Double)
- 2) Hole - 8
- 6) MH Step ML-10-TDS-NCR - 10"

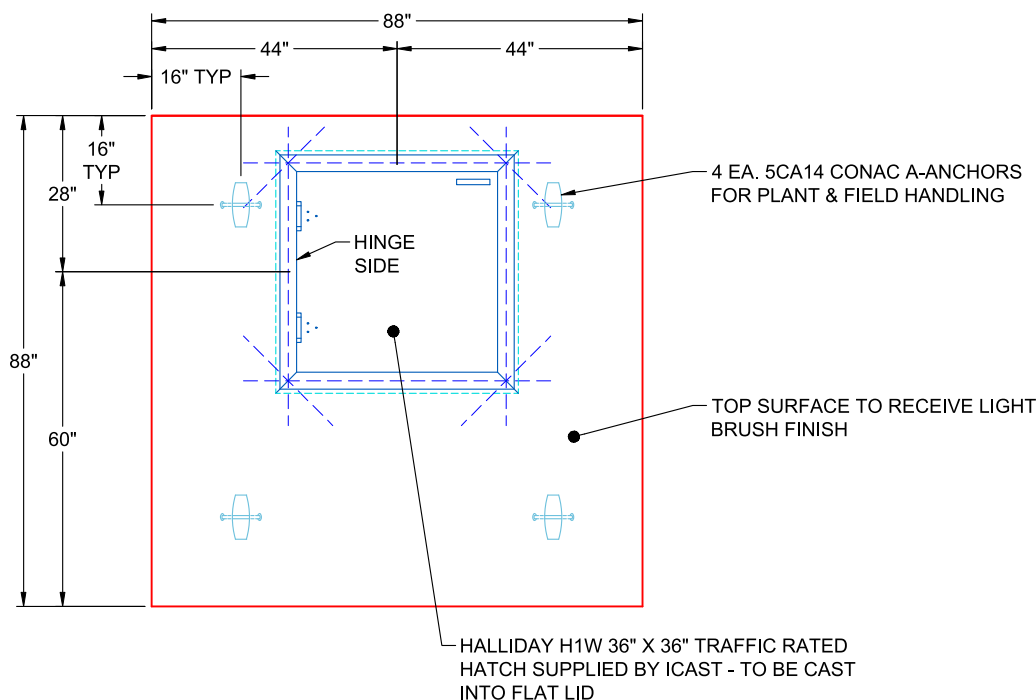
0 lb
 4655 lb
 20578 lb
 235 lb
 0 lb
 0 lb
 0 lb
 0 lb
 0 lb
 0 lb
 0 lb
 0 lb

 25468 lb

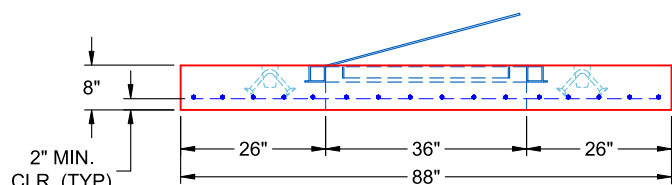
Structure Total:

Structure Notes:

1. PER ASTM C-913 SPECIFICATIONS
2. CONCRETE: 5,000 PSI AT 28 DAYS
3. REINFORCEMENT: #5 BAR @ 6" C.C. E.W. (GRADE 60) - 2" MIN. REBAR CLEARANCE (TYP)
4. HALLIDAY H1W 36" X 36" TRAFFIC RATED HATCH SUPPLIED BY ICAST - TO BE CAST INTO FLAT LID
5. LIFTERS: 4 EA. 5CA14 CONAC A-ANCHORS FOR PLANT & FIELD HANDLING
6. TOP SURFACE TO RECEIVE LIGHT BRUSH FINISH

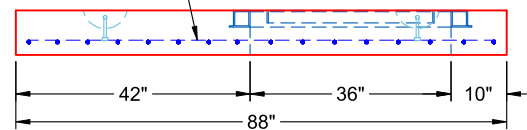


**PLAN VIEW
(RIGHT SIDE UP)**



**FRONT VIEW
(RIGHT SIDE UP)**

#5 BAR @ 6" C.C. E.W. (GRADE 60)



**SIDE VIEW
(RIGHT SIDE UP)**

Coating (Int):
 Coating (Ext):

Seam Up: Flat
 Seam Dn: Flat

Wall Thickness: 8"

Height (Ext): 8"

Weight (Net): 4655 lb
 Volume (Net): 1.19cu.yd

Job Number:

25-4668

Job Name:

Single Pressure Zone Project

Structure:

54668 (4)

Note:

Halliday H1W 36" x 36" Traffic Rated
Hatch Supplied By iCast To Be Cast
Into Flat Lid