

Job Name: 25-4668 - Single Pressure Zone Project  
 Job Location: La Grange, KY  
 Contractor: Connhurst, LLC

Plant: 100

Tech: J. Horsley - A

2/20/2026 1:23:49 PM

PC: Erica Bradley



**Structure ID: 54668 (3)**

**P2 BX072072-08TS-S**

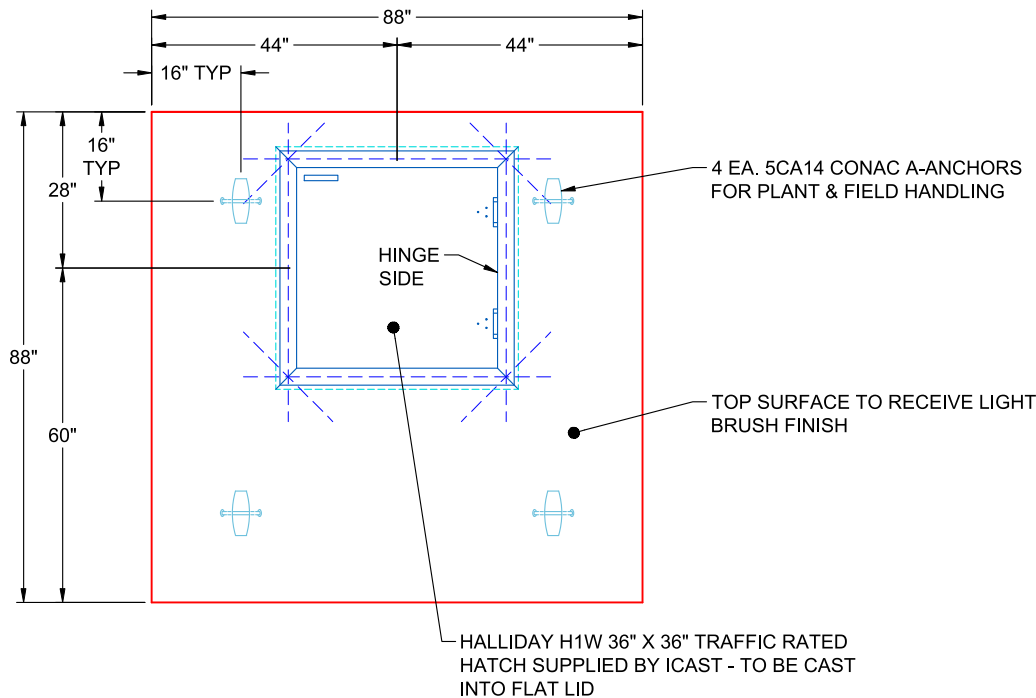
**CB FLAT TOP 8"W w/36"X36 Hatch F/F**

- P3) 36" x 36" - HATCH (CAST FLUSH) - 3"
- P2) 72" x 72" - CB FLAT TOP 8"W w/36"X36 Hatch F/F - 8"
- P1) 72" x 72" - BOX BASE 8inW, 8inF, Variable Ht F/n - 72"
- 1) HATCH (Alum.) - HALLIDAY H1W 36"x36"
- 1) This Structure Includes a Cast-in Item - Halliday H1W 36" x 36" Hatch
- 1) SPECIAL Pre-Assembly of Internal Material Required
- 1) SECONDARY POUR
- 1) 72" x 72" - Conseal CS-102 1.00" (Double)
- 1) 36" x 36" - Conseal CS-102 1.00" (Double)
- 2) Hole - 8
- 6) MH Step ML-10-TDS-NCR - 10"

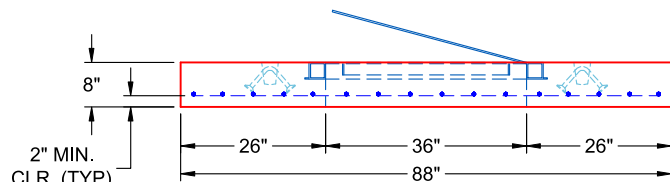
0 lb  
 4655 lb  
 20578 lb  
 235 lb  
 0 lb  
 0 lb  
 0 lb  
 0 lb  
 0 lb  
 0 lb  
 0 lb  
 0 lb  
 \_\_\_\_\_  
 25468 lb

Structure Total:

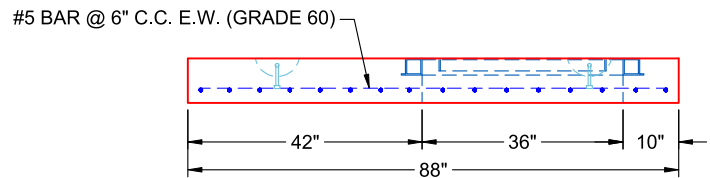
- Structure Notes:
1. PER ASTM C-913 SPECIFICATIONS
  2. CONCRETE: 5,000 PSI AT 28 DAYS
  3. REINFORCEMENT: #5 BAR @ 6" C.C. E.W. (GRADE 60)
  4. HALLIDAY H1W 36" X 36" TRAFFIC RATED HATCH SUPPLIED BY ICAST - TO BE CAST INTO FLAT LID
  5. LIFTERS: 4 EA. 5CA14 CONAC A-ANCHORS FOR PLANT & FIELD HANDLING
  6. TOP SURFACE TO RECEIVE LIGHT BRUSH FINISH



**PLAN VIEW  
(RIGHT SIDE UP)**



**FRONT VIEW  
(RIGHT SIDE UP)**



**SIDE VIEW  
(RIGHT SIDE UP)**

Coating (Int):  
 Coating (Ext):

Seam Up: Flat  
 Seam Dn: Flat

Wall Thickness: 8"

Height (Ext): 8"

Weight (Net): 4655 lb  
 Volume (Net): 1.19cu.yd

**Job Number:**

25-4668

**Job Name:**

Single Pressure Zone Project

**Structure:**

54668 (3)

**Note:**

Halliday H1W 36" x 36" Traffic Rated  
Hatch Supplied By iCast To Be Cast  
Into Flat Lid