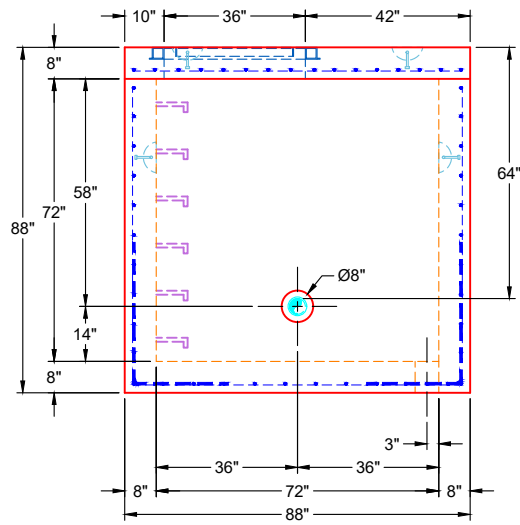
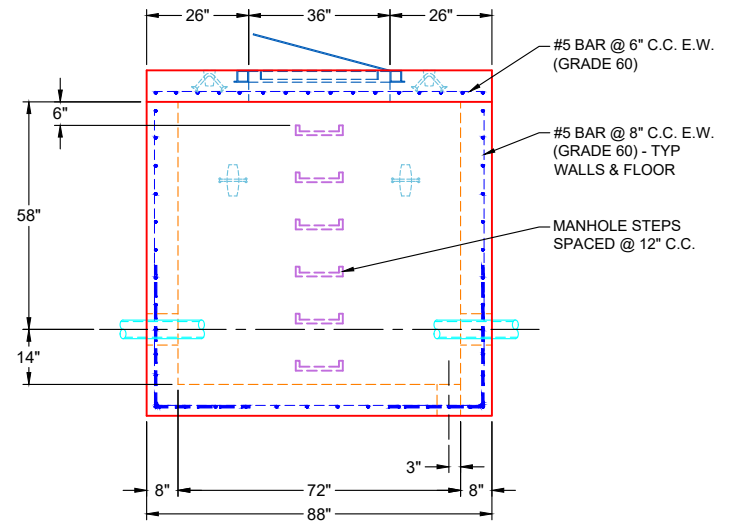


PLAN VIEW



FRONT VIEW



SIDE VIEW

GENERAL NOTES:

1. MANUFACTURED PER ASTM C-913 SPECIFICATIONS
2. CONCRETE: 5,000 PSI AT 28 DAYS
3. REINFORCEMENT:
 - FLAT LID: #5 BAR @ 6" C.C. E.W. (GRADE 60)
 - BASE WALLS & FLOOR: #5 BAR @ 8" C.C. E.W. (GRADE 60)
4. WEIGHTS:

8" FLAT LID	4,655 LBS
72" BASE (8" WALLS & FLOOR)	20,578 LBS
TOTAL WEIGHT	25,233 LBS
5. CONTRACTOR TO VERIFY ALL DIMENSIONS BEFORE MANUFACTURING
6. HALLIDAY H1W 36" X 36" TRAFFIC RATED HATCH SUPPLIED BY ICAST - TO BE CAST INTO FLAT LID
7. JOINT SEALANT: CONSEAL CS-102 - 1" (PRIMARY & SECONDARY ROWS)
8. PRE-ASSEMBLY OF INTERNAL COMPONENTS TO BE PERFORMED BY ICAST
9. MANHOLE STEPS REQUIRED

REVISION INFORMATION

REV.	DATE:	NO REVISIONS TO DATE



SUBMITTAL DRAWING: 72" X 72" PRV VAULT		
CUSTOMER: CONNHURST, LLC		
PROJECT: SINGLE PRESSURE ZONE PROJECT		
STRUCTURE: 54668 (2)		
QUOTE/SALES ORDER NO: 25-4668		
CHECKED BY: B. SMITH	DRAWN BY: ADVENSER	
DATE: 02/20/26	SCALE: NTS	PG. 1 OF 1