

Job Name: 25-4665 - Buckhorn WTP
Job Location: Hazard, KY
Contractor: Smith Contractors, Inc.

PC: E. Bradley
 TECH: J. Horsley
 Plant: 100



Structure ID: **SV (5)**
 Spec: Sanitary
 Type: Valve Vault 8inW, 8inF
 Size: 108" x 108"

Rim: 762'
 Invert: 750'
 Rim to Invert: 12'

Sump: 24"
 Floor (Top): 748"
 Floor Height: 0"

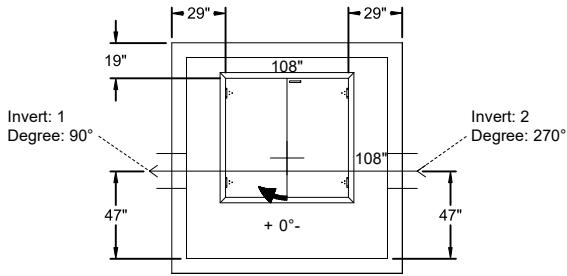
Floor (Bot): 748'
 Overall Height: 14'
 Slack: 0"

Structure Notes:

- PER ASTM C-913 SPECIFICATIONS
- CONCRETE: 4,500 PSI AT 28 DAYS
- REINFORCEMENT:
 - FLAT LID: DOUBLE MAT #5 BAR @ 6" C.C. E.W. (GRADE 60)
 - RISERS: #5 BAR @ 8" C.C. E.W. (GRADE 60)
- NO INVERT CHANNEL
- NO STEPS
- HALLIDAY W2R 66" X 64" HATCH SUPPLIED BY OTHERS - TO BE CAST INTO FLAT LID
- LADDER SUPPLIED BY OTHERS

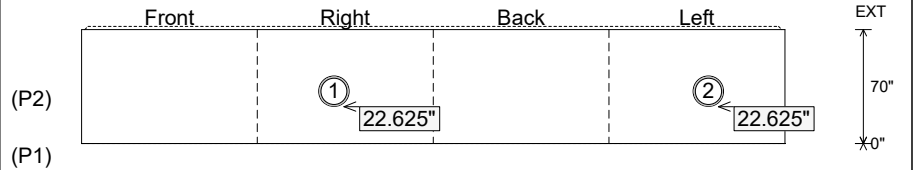
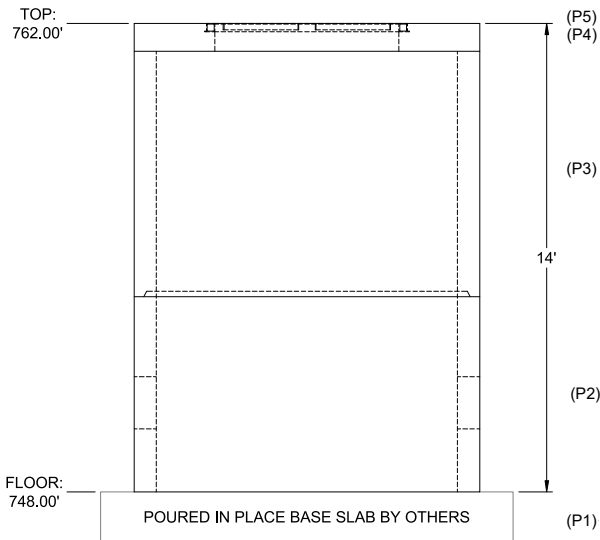
STRUCTURE SUMMARY:

- P5) 66" x 64" - HATCH (CAST FLUSH) - 3" 0 lb
 - P4) 108" x 108" - BX FLAT TOP 8"W w/66"x64" HATCH F/F - 10" 9582 lb
 - P3) 108" x 108" - BOX RISER 8inW, Variable Ht F/G - 88" 27410 lb
 - P2) 108" x 108" - BOX RISER 8inW, Variable Ht T/F - 70" 21433 lb
 - P1) 108" x 108" - P.I.P. BY OTHERS - BTM SLAB F/n - 0" 0 lb
 - 1) JOINT WRAP - 0.065"x6"x50' CONSEAL CS212 0 lb
 - 1) JOINT WRAP PRIMER - CONSEAL CS-75 (1 gal.) 0 lb
 - 1) This Structure Includes a Cast-in Item - Hatch (Supplied by Others) 0 lb
 - 3) 108" x 108" - Conseal CS-102 1.00" (Double) 0 lb
 - 2) A-Lok - 0570 2 lb
- Structure Total: 58425 lb



| Position | Elev | Angle | Pipe | Pipe OD | Hole | Connector | Up (") | Ref |
|----------|------|-------|--------|---------|--------|------------|---------|-----|
| Rim | 762' | | | | | | | |
| Reducer | | | | | | | | |
| Invert 1 | 750' | 90° | 16" DI | 17.5" | 18.75" | A-Lok 0570 | 22.625" | P2 |
| Invert 2 | 750' | 270° | 16" DI | 17.5" | 18.75" | A-Lok 0570 | 22.625" | P2 |
| Invert 3 | | | | | | | | |
| Invert 4 | | | | | | | | |
| Invert 5 | | | | | | | | |
| Invert 6 | | | | | | | | |
| Invert 7 | | | | | | | | |
| Invert 8 | | | | | | | | |

Cast (Int. Dim.) - Interior Dimensions



Submittal Drawing
 4/7/2026 2:11:42 PM

SUBMITTAL
 APPROVED BY: