

Job Name: 25-4665 - Buckhorn WTP  
 Job Location: Hazard, KY  
 Contractor: Smith Contractors, Inc.

Plant: 100

4/7/2026 3:53:18 PM

Tech: J. Horsley

PC: E. Bradley



**Structure ID: SV (5)**

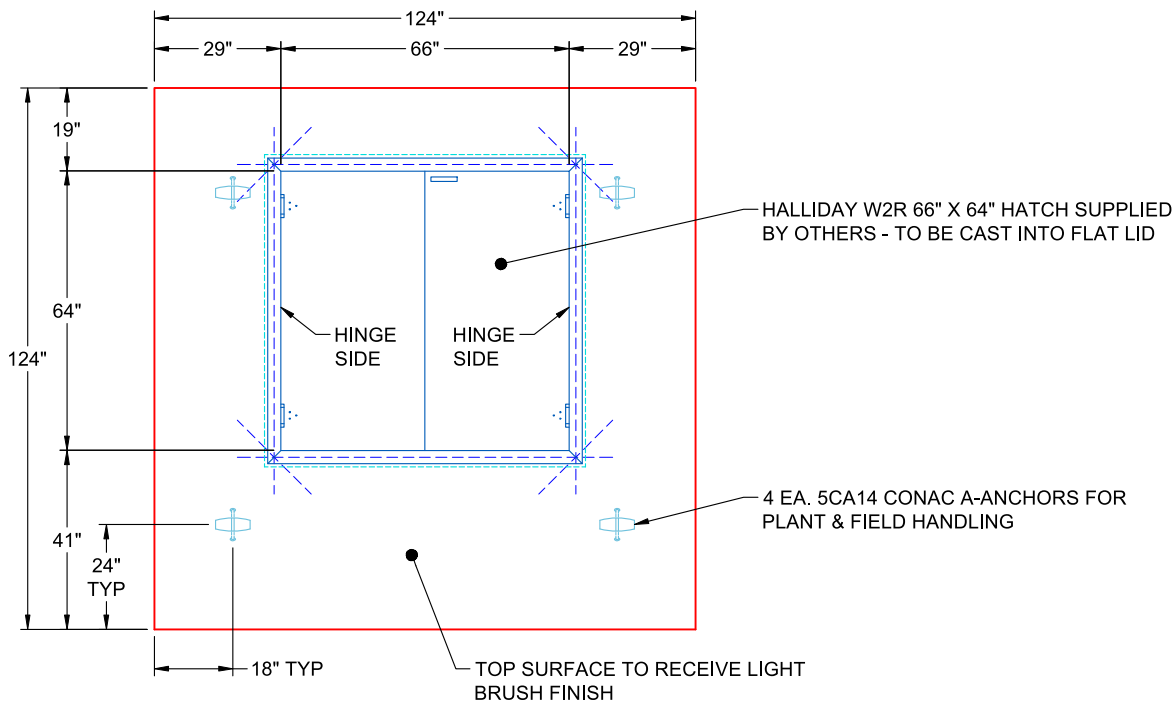
**P4 BX108108-10LD08S**

**BX FLAT TOP 8"W w/66"x64" HATCH F/F**

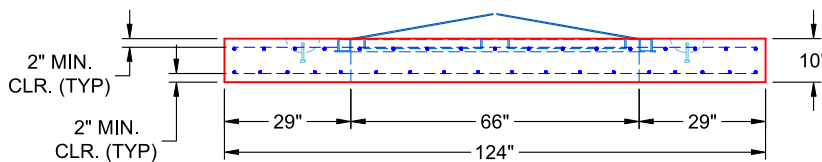
- P5) 66" x 64" - HATCH (CAST FLUSH) - 3"
- P4) 108" x 108" - BX FLAT TOP 8"W w/66"x64" HATCH F/F - 10"
- P3) 108" x 108" - BOX RISER 8inW, Variable Ht F/G - 88"
- P2) 108" x 108" - BOX RISER 8inW, Variable Ht T/F - 70"
- P1) 108" x 108" - P.I.P. BY OTHERS - BTM SLAB F/n - 0"
- 1) JOINT WRAP - 0.065"x6"x50' CONSEAL CS212
- 1) JOINT WRAP PRIMER - CONSEAL CS-75 (1 gal.)
- 1) This Structure Includes a Cast-in Item - Hatch (Supplied by Others)
- 3) 108" x 108" - Conseal CS-102 1.00" (Double)
- 2) A-Lok - 0570

	0 lb
	9582 lb
	27410 lb
	21433 lb
	0 lb
	0 lb
	0 lb
	0 lb
	0 lb
	2 lb
Structure Total:	58427 lb

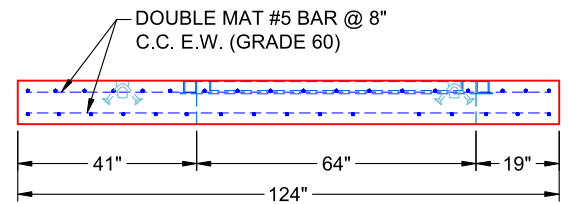
- Structure Notes:
1. PER ASTM C-913 SPECIFICATIONS
  2. CONCRETE: 4,500 PSI AT 28 DAYS
  3. REINFORCEMENT: DOUBLE MAT #5 BAR @ 6" C.C. E.W. (GRADE 60) - 2" MIN. REBAR CLEARANCE (TYP)
  4. HALLIDAY W2R 66" X 64" HATCH SUPPLIED BY OTHERS - TO BE CAST INTO FLAT LID
  5. LIFTERS: 4 EA. 5CA14 CONAC A-ANCHORS FOR PLANT & FIELD HANDLING
  6. TOP SURFACE TO RECEIVE LIGHT BRUSH FINISH



**PLAN VIEW  
(RIGHT SIDE UP)**



**FRONT VIEW  
(RIGHT SIDE UP)**



**SIDE VIEW  
(RIGHT SIDE UP)**

Coating (Int):  
 Coating (Ext):

Seam Up: Flat  
 Seam Dn: Flat

Wall Thickness: 8"

Height (Ext): 10"

Weight (Net): 9582 lb  
 Volume (Net): 2.45cu.yd

**Job Number:**

25-4665

**Job Name:**

Buckhorn WTP

**Structure:**

SV (5)

**Note:**

Halliday W2R 66" x 64" Hatch

Supplied By Others To Be Cast Into

Flat Lid