

Job Name: 25-4665 - Buckhorn WTP Job Location: Hazard, KY Contractor: Smith Contractors, Inc.	Plant: 100 4/7/2026 3:51:36 PM	Tech: J. Horsley PC: E. Bradley	
---	-----------------------------------	------------------------------------	--

Structure ID: SV (5)

P2 BX108108-08W-RSVF

BOX RISER 8inW, Variable Ht T/F

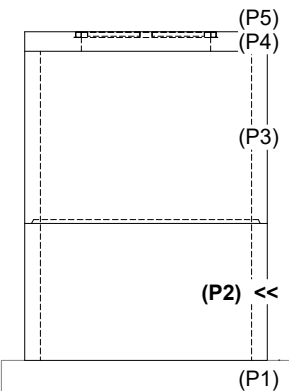
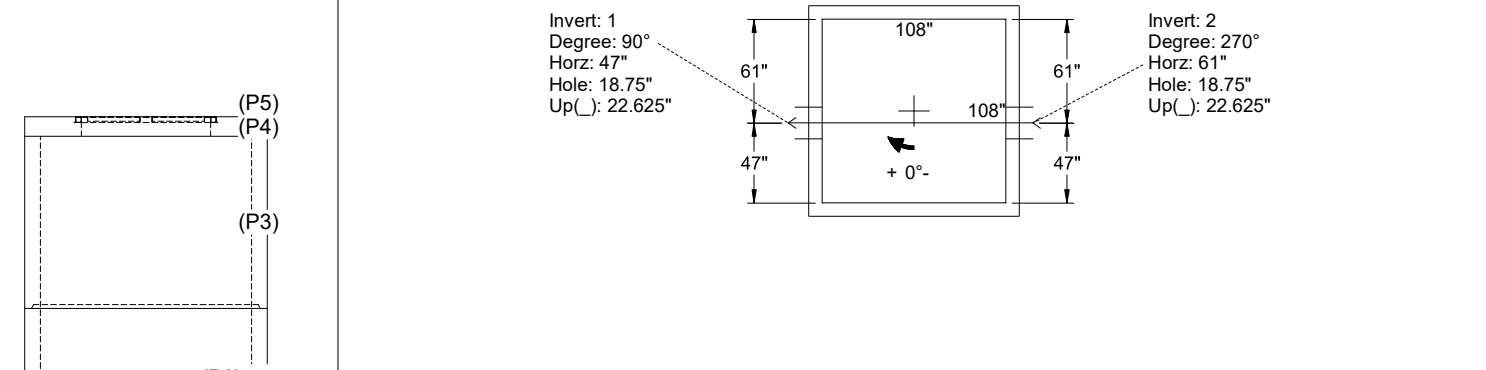
P5) 66" x 64" - HATCH (CAST FLUSH) - 3"	0 lb
P4) 108" x 108" - BX FLAT TOP 8"W w/66"x64" HATCH F/F - 10"	9582 lb
P3) 108" x 108" - BOX RISER 8inW, Variable Ht F/G - 88"	27410 lb
P2) 108" x 108" - BOX RISER 8inW, Variable Ht T/F - 70"	21433 lb
P1) 108" x 108" - P.I.P. BY OTHERS - BTM SLAB F/n - 0"	0 lb
1) JOINT WRAP - 0.065"x6"x50' CONSEAL CS212	0 lb
1) JOINT WRAP PRIMER - CONSEAL CS-75 (1 gal.)	0 lb
1) This Structure Includes a Cast-in Item - Hatch (Supplied by Others)	0 lb
3) 108" x 108" - Conseal CS-102 1.00" (Double)	0 lb
2) A-Lok - 0570	2 lb
Structure Total:	58427 lb

- Structure Notes:**
- PER ASTM C-913 SPECIFICATIONS
 - CONCRETE: 4,500 PSI AT 28 DAYS
 - REINFORCEMENT: #5 BAR @ 8" C.C. E.W. (GRADE 60) - 2" MIN. REBAR CLEARANCE (TYP)
 - NO STEPS
 - HALLIDAY W2R 66" X 64" HATCH SUPPLIED BY OTHERS - TO BE CAST INTO FLAT LID
 - LADDER SUPPLIED BY OTHERS

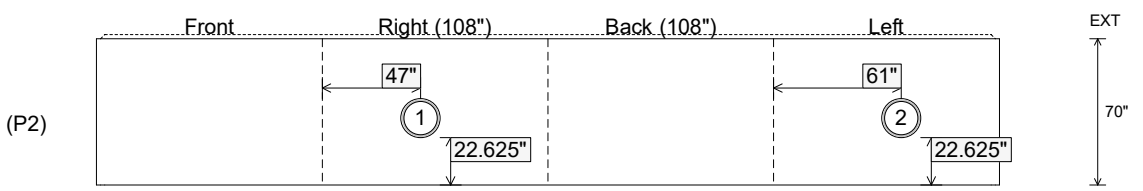
Rim: 762' Rim to Invert: 12' Slack: 0" Sump: 24" Step Position:

Position	Elev	Angle	Ext. (cw)	Pipe	Pipe OD	Connector	Hole	Horz Size	Up ()	Offset
Invert 1	750'	90°	55"	16" DI	17.5"	A-Lok 0570	18.75"	18.75"	22.625"	-7"
Invert 2	750'	270°	69"	16" DI	17.5"	A-Lok 0570	18.75"	18.75"	22.625"	7"
Invert 3										
Invert 4										
Invert 5										
Invert 6										
Invert 7										
Invert 8										

RIGHT-SIDE UP VIEW (int. dimensions)



INSIDE WALL DIMENSIONS



Coating (Int): Coating (Ext):	Seam Up: Tongue Seam Dn: Flat	Wall Thickness: 8" Floor Height: 0"	Height (Int): 70" Height (Ext): 70"	Weight (Net): 21433 lb Volume (Net): 5.48cu.yd
----------------------------------	----------------------------------	--	--	---