

Job Name: 25-4665 - Buckhorn WTP
 Job Location: Hazard, KY
 Contractor: Smith Contractors, Inc.

Plant: 100

4/9/2026 4:18:30 PM

Tech: J. Horsley

PC: E. Bradley



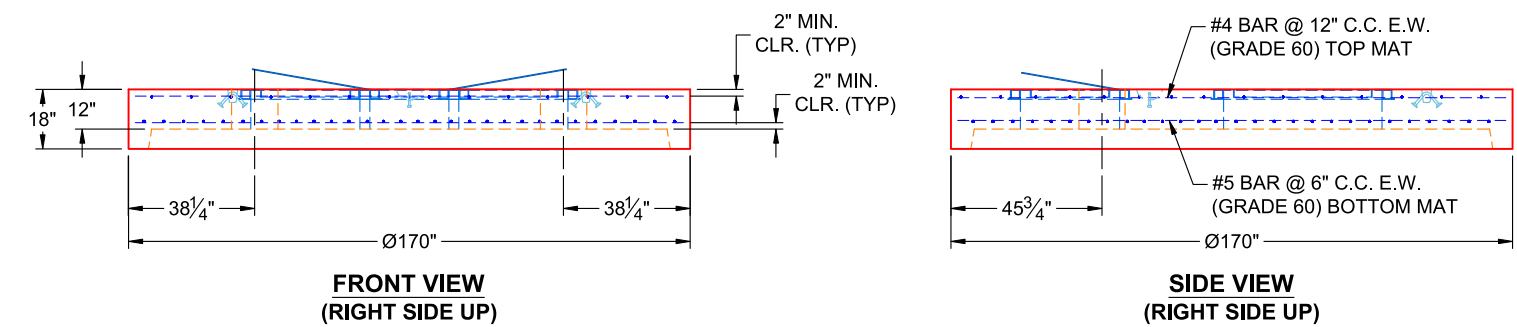
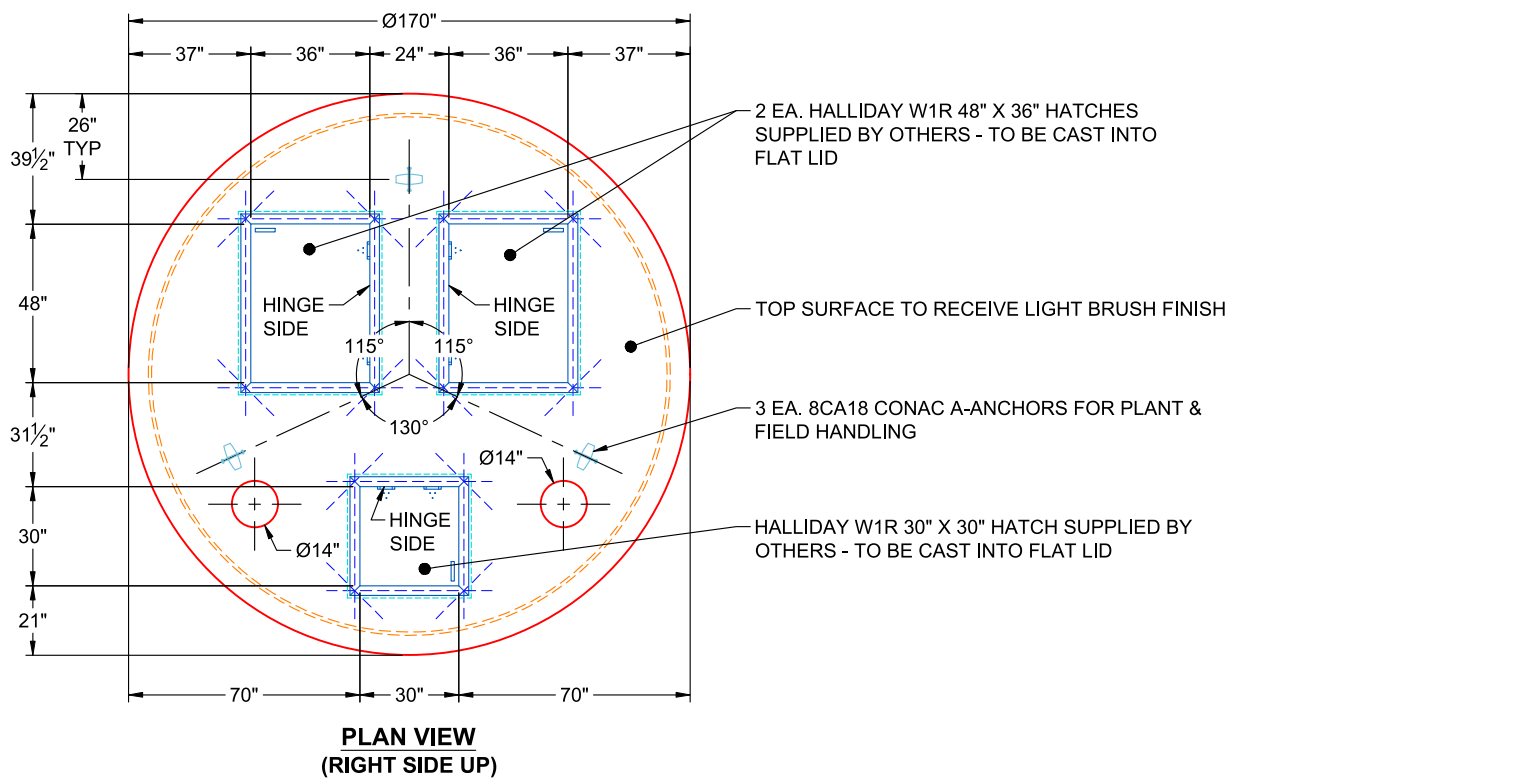
Structure ID: 54665 (4)

P9 MH144LD18S

MH FLAT TOP w/(2) 48"x36" & (1) 30"x30" Hatches

P10) 48" x 36" - HATCH (CAST FLUSH) - 0"	0 lb
P9) 144" - MH FLAT TOP w/(2) 48"x36" & (1) 30"x30" Hatches F/G - 18"	19644 lb
P8) 144" - MH RISER Custom Ht T/G - 81"	43581 lb
P7) 144" - MH RISER Custom Ht T/G - 81"	43581 lb
P6) 144" - MH RISER Custom Ht T/G - 81"	43581 lb
P5) 144" - MH RISER Custom Ht T/G - 81"	43581 lb
P4) 144" - MH RISER Custom Ht T/G - 74"	39815 lb
P3) 144" - MH RISER Custom Ht T/G - 74"	39815 lb
P2) 144" - MH RISER Custom Ht T/F - 74"	39445 lb
P1) 144" - P.I.P. BY OTHERS - BTM SLAB F/n - 0"	0 lb
7) JOINT WRAP - 12" WD x 144" MAC WRAP	0 lb
1) SECONDARY POUR - Intermediate Slab (In Riser P5)	13500 lb
1) This Structure Includes a Cast-in Item - Hatches (Supplied by Others)	0 lb
4) Stainless Steel Strap - 3"W x 24"L Stainless Steel Strap	0 lb
8) 144" - Conseal CS-231 1.00" (Double)	0 lb
1) A-Lok - 0630	1 lb
Structure Total:	326544 lb

- Structure Notes:**
- PER ASTM C-478 SPECIFICATIONS
 - CONCRETE: 4,500 PSI AT 28 DAYS
 - REINFORCEMENT - 2" MIN. REBAR CLEARANCE (TYP):
 - TOP MAT: #4 BAR @ 12" C.C. E.W. (GRADE 60)
 - BOTTOM MAT: #5 BAR @ 6" C.C. E.W. (GRADE 60)
 - 2 EA. HALLIDAY W1R 48" X 36" HATCHES & 1 EA. HALLIDAY W1R 30" X 30" HATCH SUPPLIED BY OTHERS - TO BE CAST INTO FLAT LID
 - 2 EA. 12" DUCTILE IRON VENT PIPES SUPPLIED BY OTHERS (INSTALLED IN FIELD BY OTHERS)
 - LIFTERS: 3 EA. 8CA18 CONAC A-ANCHORS FOR PLANT & FIELD HANDLING
 - TOP SURFACE TO RECEIVE LIGHT BRUSH FINISH



Coating (Int): Coating (Ext):	Seam Up: Flat Seam Dn: Groove	Wall Thickness: 13"	Height (Ext): 18"	Weight (Net): 19644 lb Volume (Net): 5.02cu.yd
----------------------------------	----------------------------------	---------------------	-------------------	---

Job Number:

25-4665

Job Name:

Buckhorn WTP

Structure:

54665 (4)

Note:

2 Ea. Halliday W1R 48" x 36"

Hatches & 1 Ea. Halliday W1R 30" x
30" Hatch Supplied By Others To Be
Cast Into Flat Lid