

Job Name: 25-4665 - Buckhorn WTP
 Job Location: Hazard, KY
 Contractor: Smith Contractors, Inc.

Plant: 100
 4/9/2026 3:44:45 PM

Tech: J. Horsley
 PC: E. Bradley



Structure ID: 54665 (4)

P5 MH144RSVF

MH RISER Custom Ht T/G

- P10) 48" x 36" - HATCH (CAST FLUSH) - 0"
- P9) 144" - MH FLAT TOP w/(2) 48"x36" & (1) 30"x30" Hatches F/G - 18"
- P8) 144" - MH RISER Custom Ht T/G - 81"
- P7) 144" - MH RISER Custom Ht T/G - 81"
- P6) 144" - MH RISER Custom Ht T/G - 81"
- P5) 144" - MH RISER Custom Ht T/G - 81"
- P4) 144" - MH RISER Custom Ht T/G - 74"
- P3) 144" - MH RISER Custom Ht T/G - 74"
- P2) 144" - MH RISER Custom Ht T/F - 74"
- P1) 144" - P.I.P. BY OTHERS - BTM SLAB F/n - 0"
- 7) JOINT WRAP - 12" WD x 144" MAC WRAP
- 1) SECONDARY POUR - Intermediate Slab (In Riser P5)
- 1) This Structure Includes a Cast-in Item - Hatches (Supplied by Others)
- 4) Stainless Steel Strap - 3"W x 24"L Stainless Steel Strap
- 8) 144" - Conseal CS-231 1.00" (Double)
- 1) A-Lok - 0630

0 lb
 19644 lb
 43581 lb
 43581 lb
 43581 lb
 43581 lb
 39815 lb
 39815 lb
 39445 lb
 0 lb
 0 lb
 13500 lb
 0 lb
 0 lb
 0 lb
 0 lb
 1 lb

- Structure Notes:
1. PER ASTM C-478 SPECIFICATIONS
 2. CONCRETE: 4,500 PSI AT 28 DAYS
 3. REINFORCEMENT: PER ASTM A615
 4. NO STEPS
 5. 2 EA. HALLIDAY W1R 48" X 36" HATCHES & 1 EA. HALLIDAY W1R 30" X 30" HATCHE SUPPLIED BY OTHERS - TO BE CAST INTO FLAT LID
 6. LADDER SUPPLIED BY OTHERS
 7. 4 EA. 3"W X 24"L STAINLESS STEEL STRAPS SUPPLIED BY ICAST

Structure Total: 326544 lb

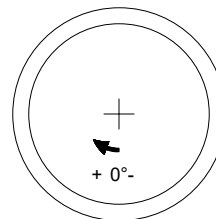
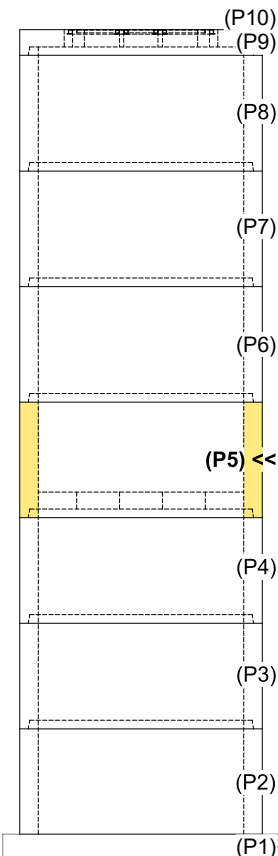
FIRST POUR (RISER): 43,581 LBS

SECOND POUR (INTERMEDIATE SLAB): 13,500 LBS

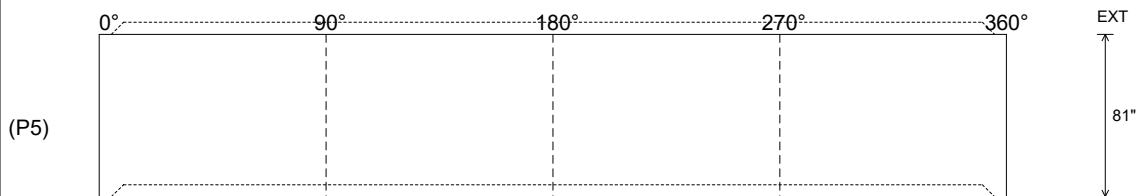
Rim: 755' Rim to Invert: 46' Slack: 0" Sump: 12" Step Position:

Position	Elev	Angle	Ext. (cw)	Pipe	Pipe OD	Connector	Hole	Horz Size	Up (L)	Offset
Invert 1										
Invert 2										
Invert 3										
Invert 4										
Invert 5										
Invert 6										
Invert 7										

RIGHT-SIDE UP VIEW (int. dimensions)



INSIDE WALL DIMENSIONS



Coating (Int):
 Coating (Ext):

Seam Up: Tongue
 Seam Dn: Groove

Wall Thickness: 13"
 Floor Height: 0"

Height (Int): 81"
 Height (Ext): 81"

Weight (Net): 43581 lb
 Volume (Net): 11.13cu.yd

Job Name: 25-4665 - Buckhorn WTP
 Job Location: Hazard, KY
 Contractor: Smith Contractors, Inc.

Plant: 100
 4/9/2026 3:44:45 PM

Tech: J. Horsley
 PC: E. Bradley



Structure ID: 54665 (4)

P5 MH144RSVF

MH RISER Custom Ht T/G

- P10) 48" x 36" - HATCH (CAST FLUSH) - 0"
- P9) 144" - MH FLAT TOP w/(2) 48"x36" & (1) 30"x30" Hatches F/G - 18"
- P8) 144" - MH RISER Custom Ht T/G - 81"
- P7) 144" - MH RISER Custom Ht T/G - 81"
- P6) 144" - MH RISER Custom Ht T/G - 81"
- P5) 144" - MH RISER Custom Ht T/G - 81"
- P4) 144" - MH RISER Custom Ht T/G - 74"
- P3) 144" - MH RISER Custom Ht T/G - 74"
- P2) 144" - MH RISER Custom Ht T/F - 74"
- P1) 144" - P.I.P. BY OTHERS - BTM SLAB F/n - 0"
- 7) JOINT WRAP - 12" WD x 144" MAC WRAP
- 1) SECONDARY POUR - Intermediate Slab (In Riser P5)
- 1) This Structure Includes a Cast-in Item - Hatches (Supplied by Others)
- 4) Stainless Steel Strap - 3"W x 24"L Stainless Steel Strap
- 8) 144" - Conseal CS-231 1.00" (Double)
- 1) A-Lok - 0630

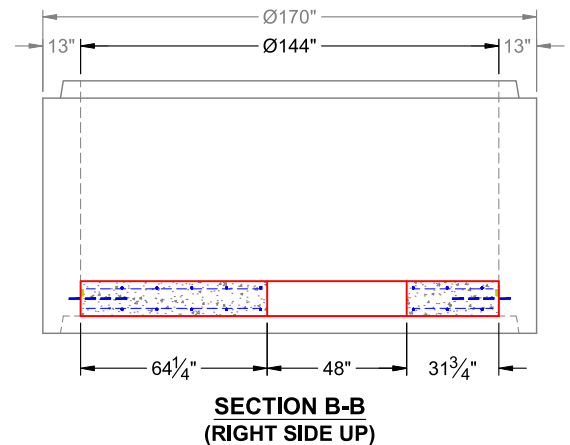
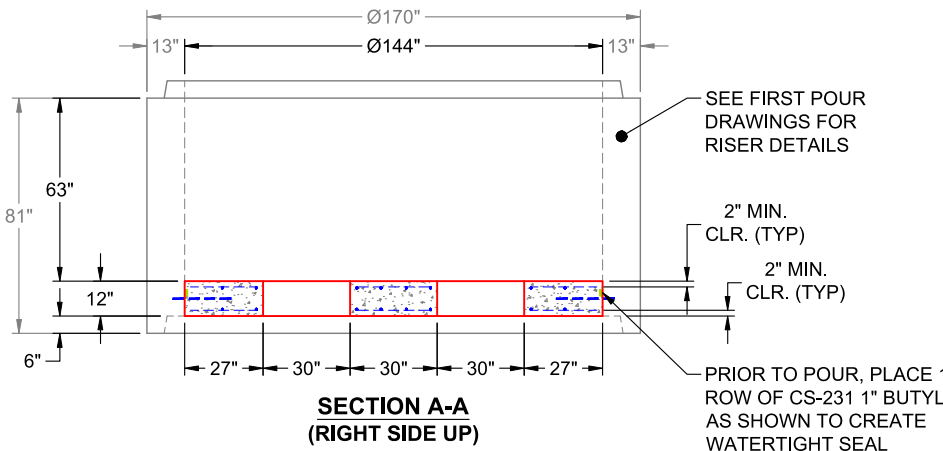
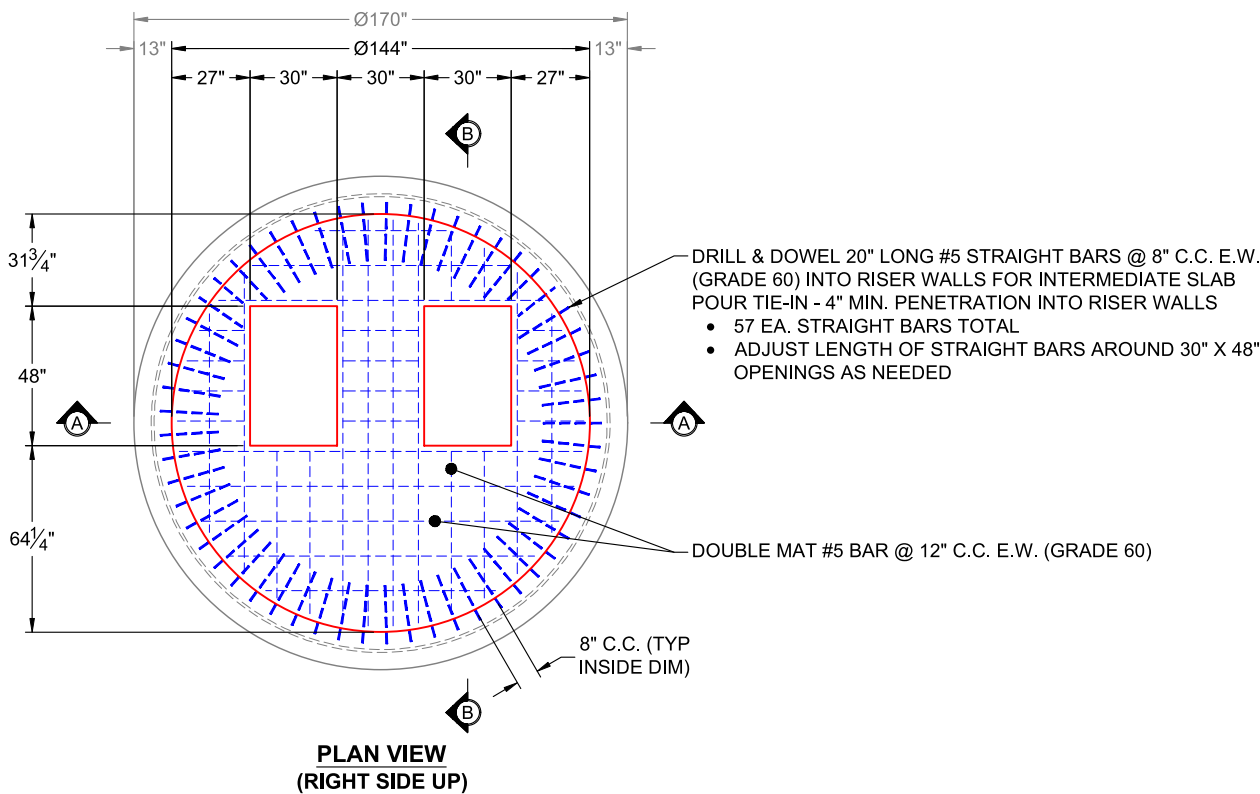
0 lb
 19644 lb
 43581 lb
 43581 lb
 43581 lb
 43581 lb
 39815 lb
 39815 lb
 39815 lb
 39445 lb
 0 lb
 0 lb
 13500 lb
 0 lb
 0 lb
 0 lb
 0 lb
 1 lb

 Structure Total: 326544 lb

- Structure Notes:
1. PER ASTM C-478 SPECIFICATIONS
 2. CONCRETE: 4,500 PSI AT 28 DAYS
 3. REINFORCEMENT: DOUBLE MAT #5 BAR @ 12" C.C. E.W. (GRADE 60) - 2" MIN. REBAR CLEARANCE (TYP)
 4. DRILL & DOWEL 20" LONG #5 BAR @ 8" C.C. E.W. (GRADE 60) INTO RISER WALLS FOR INTERMEDIATE SLAB POUR TIE-IN - MIN. 4" PENETRATION INTO RISER WALLS
 5. PRIOR TO SLAB POUR, PLACE 1 ROW OF CS-231 1" BUTYL TO CREATE WATERTIGHT SEAL

FIRST POUR (RISER): 43,581 LBS
SECOND POUR (INTERMEDIATE SLAB): 13,500 LBS

Rim: 755' Rim to Invert: 46' Slack: 0" Sump: 12" Step Position:



Coating (Int): Coating (Ext):	Seam Up: Tongue Seam Dn: Groove	Wall Thickness: 13" Floor Height: 0"	Height (Int): 81" Height (Ext): 81"	Weight (Net): 43581 lb Volume (Net): 11.13cu.yd
----------------------------------	------------------------------------	---	--	--