

Job Name: 25-4631 Bishop Cotton Apartments
Job Location: Owensboro, KY
Contractor: Winwater Hartford KY Co.

PC: Andy Chambers
 TECH: J. Horsley - A
 Plant: 100



Structure ID: **CA4 (3)**
 Spec: Storm
 Type: BX 8inW, 8inF
 Size: 24" x 72"

Rim: 430.93'
 Invert: 428.92'
 Rim to Invert: 2.01'

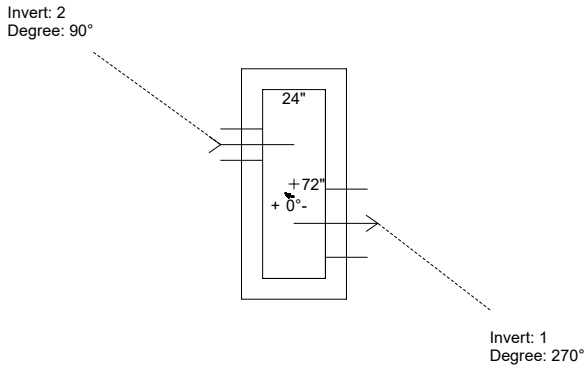
Sump: 2.5"
 Floor (Top): 428.712'
 Floor Height: 8"

Floor (Bot): 428.045'
 Overall Height: 2.833'
 Slack: 0.62"

- Structure Notes:**
 PLAN LABEL: CA-4
 1. PER ASTM C-913 SPECIFICATIONS
 2. CONCRETE: 4,000 PSI AT 28 DAYS
 3. REINFORCEMENT: #5 BAR @ 12" C.C. E.W. (GRADE 60)
 4. NO STORM INVERT
 5. NO STEPS
 6. HOE 525 DOUBLE FRAMES, GRATES, & CURB HOODS SUPPLIED BY ICAST
 7. CONTRACTOR WILL BE RESPONSIBLE FOR NOTCHING 18" RCP (INVERT 1)
 8. INVERT 1 OFFSET 15" FROM CENTER
 INVERT 2 OFFSET 15" FROM CENTER

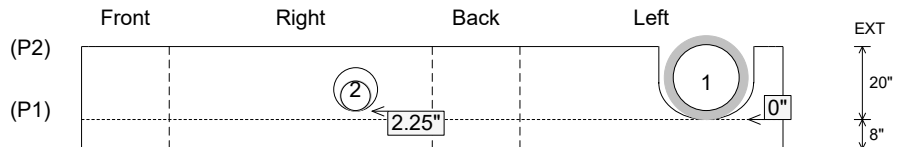
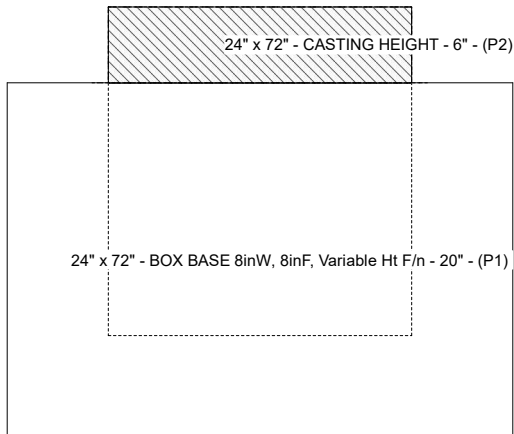
STRUCTURE SUMMARY:

P2) 24" x 72" - CASTING HEIGHT - 6"	0 lb
P1) 24" x 72" - BOX BASE 8inW, 8inF, Variable Ht F/n - 20"	4983 lb
1) SECONDARY POUR	0 lb
1) CASTING - HOE 525 LV DOUBLE SET (F/G/H)	442 lb
1) 24" x 72" - Conseal CS-102 1.00"	0 lb
1) DOGHOUSE INVRTD - 26"x20"	0 lb
1) Hole - 12	0 lb
Structure Total:	5425 lb



Position	Elev	Angle	Pipe	Pipe OD	Hole	Connector	Up (L)	Ref
Rim	430.93'							
Reducer								
Invert 1	428.92'	270°	18" RCP B WALL	23"	26" x 20"	DOGHOUSE INVRTD 26"x20"	0"	P1
Invert 2	428.92'	90°	8" PVC SDR26	8.5"	12"	Hole 12	2.25"	P1
Invert 3								
Invert 4								
Invert 5								
Invert 6								
Invert 7								
Invert 8								

Cast (Int. Dim.) - Interior Dimensions



Submittal Drawing
 1/21/2026 12:28:11 PM

SUBMITTAL
 APPROVED BY: