



Structure ID: CA4 (3)

P1 BX2472-08BAVF

BOX BASE 8inW, 8inF, Variable Ht F/n

- P2) 24" x 72" - CASTING HEIGHT - 6"
- P1) 24" x 72" - BOX BASE 8inW, 8inF, Variable Ht F/n - 20"
- 1) SECONDARY POUR
- 1) CASTING - HOE 525 LV DOUBLE SET (F/G/H)
- 1) 24" x 72" - Conseal CS-102 1.00"
- 1) DOGHOUSE INVRTD - 26"x20"
- 1) Hole - 12

0 lb
 4983 lb
 0 lb
 442 lb
 0 lb
 0 lb
 0 lb

 0 lb
 Structure Total: 5425 lb

- Structure Notes:**
1. PER ASTM C-913 SPECIFICATIONS
 2. CONCRETE: 4,000 PSI AT 28 DAYS
 3. REINFORCEMENT: #5 BAR @ 12" C.C. E.W. (GRADE 60) - 2" MIN. REBAR CLEARANCE (TYP)
 4. NO STORM INVERT
 5. NO STEPS
 6. HOE 525 DOUBLE FRAMES, GRATES, & CURB HOODS SUPPLIED BY ICAST
 7. CONTRACTOR WILL BE RESPONSIBLE FOR NOTCHING 18" RCP (INVERT 1)
 8. WET STICK 12" X 14" #5 L-BARS SPACED @ 12" C.C. (GRADE 60) OUT OF FLOOR FOR WALL POUR TIE-IN (SEE L-BAR DETAIL)

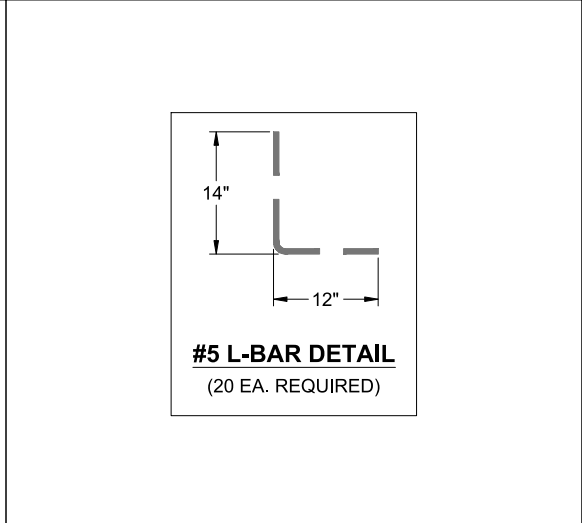
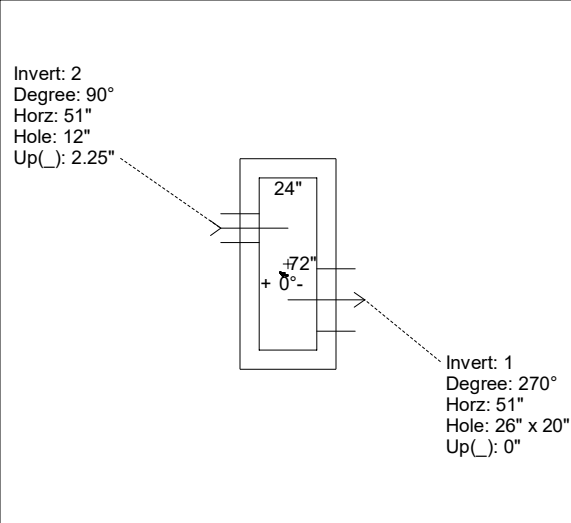
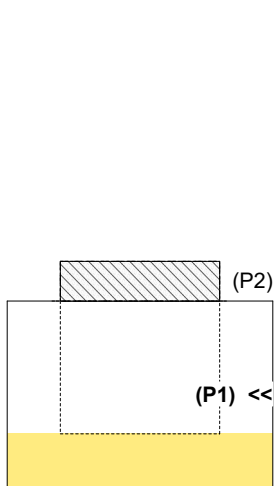
FIRST POUR (FLOOR): 2,363 LBS
SECOND POUR (WALLS): 2,620 LBS

Rim: 430.93' Rim to Invert: 2.01' Slack: 0.62" Sump: 2.5" Step Position:

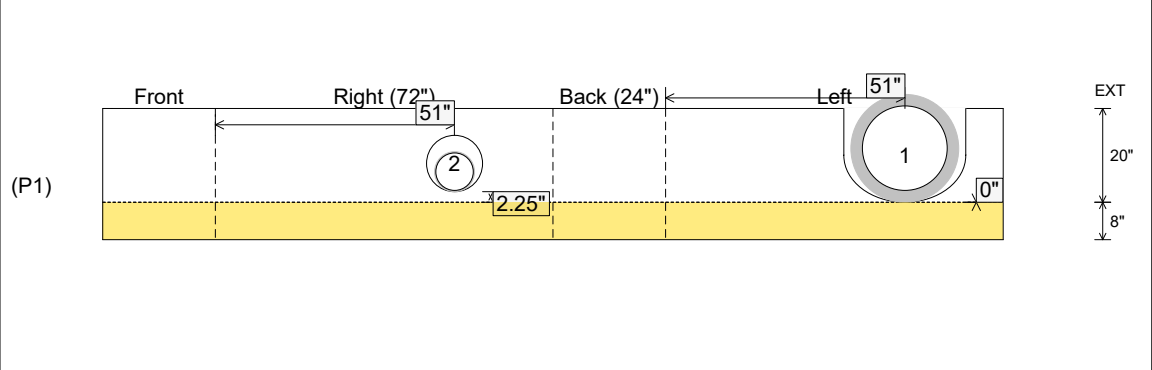
Position	Elev	Angle	Ext. (cw)	Pipe	Pipe OD	Connector	Hole	Horz Size	Up (↓)	Offset
Invert 1	428.92'	270°	59"	18" RCP B WALL	23"	DOGHOUSE INVRTD 26"x20"	26" x 20"	26"	0"	15"
Invert 2	428.92'	90°	59"	8" PVC SDR26	8.5"	Hole 12	12"	12"	2.25"	15"
Invert 3										
Invert 4										
Invert 5										
Invert 6										
Invert 7										
Invert 8										

RIGHT-SIDE UP VIEW (int. dimensions)

UPSIDE-DOWN VIEW (int. dimenions)



INSIDE WALL DIMENSIONS



Coating (Int): Coating (Ext):	Seam Up: Flat Seam Dn: n/a	Wall Thickness: 8" Floor Height: 8"	Height (Int): 20" Height (Ext): 28"	Weight (Net): 4983 lb Volume (Net): 1.27cu.yd
----------------------------------	-------------------------------	--	--	--



Structure ID: CA4 (3)

P1 BX2472-08BAVF

BOX BASE 8inW, 8inF, Variable Ht F/n

- P2) 24" x 72" - CASTING HEIGHT - 6"
- P1) 24" x 72" - BOX BASE 8inW, 8inF, Variable Ht F/n - 20"
- 1) SECONDARY POUR
- 1) CASTING - HOE 525 LV DOUBLE SET (F/G/H)
- 1) 24" x 72" - Conseal CS-102 1.00"
- 1) DOGHOUSE INVRTD - 26"x20"
- 1) Hole - 12

0 lb
 4983 lb
 0 lb
 442 lb
 0 lb
 0 lb
 0 lb
 -----0 lb
 Structure Total: 5425 lb

- Structure Notes:**
1. PER ASTM C-913 SPECIFICATIONS
 2. CONCRETE: 4,000 PSI AT 28 DAYS
 3. REINFORCEMENT: #5 BAR @ 12" C.C. E.W. (GRADE 60) - 2" MIN. REBAR CLEARANCE (TYP)
 4. NO STORM INVERT
 5. NO STEPS
 6. HOE 525 DOUBLE FRAMES, GRATES, & CURB HOODS SUPPLIED BY ICAST
 7. CONTRACTOR WILL BE RESPONSIBLE FOR NOTCHING 18" RCP (INVERT 1)
 8. LIFTERS: 4 EA. 5CA14 CONAC A-ANCHORS FOR PLANT & FIELD HANDLING - INSTALLED IN 0° & 180° WALLS, 10" FROM TOP OF WALLS

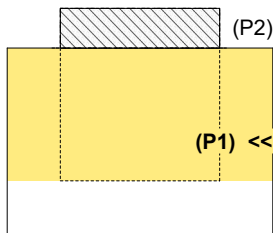
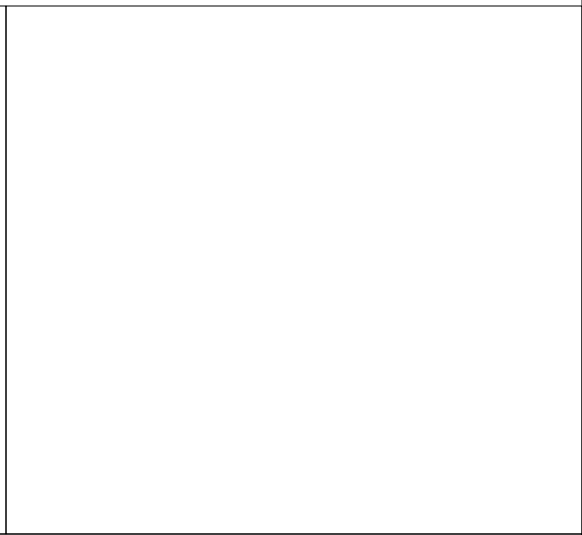
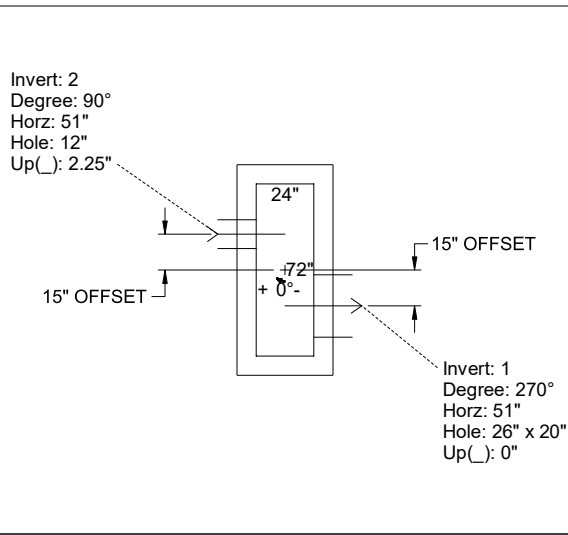
FIRST POUR (FLOOR): 2,363 LBS
SECOND POUR (WALLS): 2,620 LBS

Rim: 430.93' Rim to Invert: 2.01' Slack: 0.62" Sump: 2.5" Step Position:

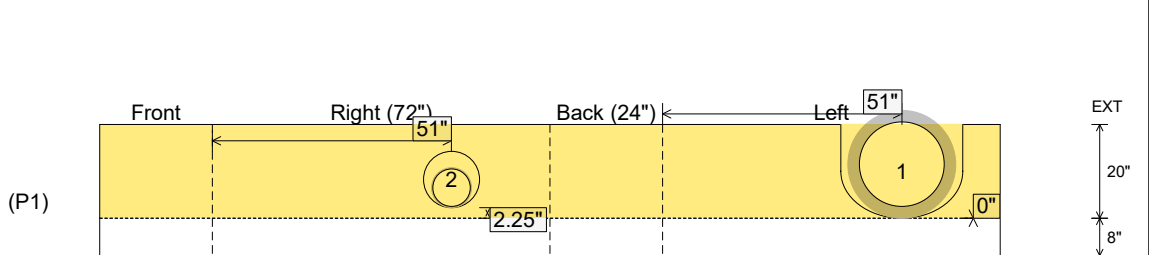
Position	Elev	Angle	Ext. (cw)	Pipe	Pipe OD	Connector	Hole	Horz Size	Up ()	Offset
Invert 1	428.92'	270°	59"	18" RCP B WALL	23"	DOGHOUSE INVRTD 26"x20"	26" x 20"	26"	0"	15"
Invert 2	428.92'	90°	59"	8" PVC SDR26	8.5"	Hole 12	12"	12"	2.25"	15"
Invert 3										
Invert 4										
Invert 5										
Invert 6										
Invert 7										
Invert 8										

RIGHT-SIDE UP VIEW (int. dimensions)

UPSIDE-DOWN VIEW (int. dimenions)



INSIDE WALL DIMENSIONS



Coating (Int): Coating (Ext):	Seam Up: Flat Seam Dn: n/a	Wall Thickness: 8" Floor Height: 8"	Height (Int): 20" Height (Ext): 28"	Weight (Net): 4983 lb Volume (Net): 1.27cu.yd
----------------------------------	-------------------------------	--	--	--