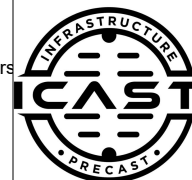


Job Name: 25-4631 Bishop Cotton Apartments
 Job Location: Owensboro, KY
 Contractor: Winwater Hartford KY Co.

Plant: 100
 1/21/2026 12:49:33 PM

Tech: J. Horsley - A
 PC: Andy Chambers



Structure ID: BA3 (7)

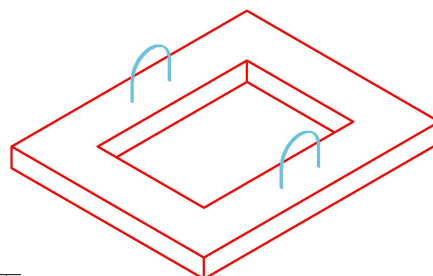
P3 GR24x36x8x3

GRADE RING F/F

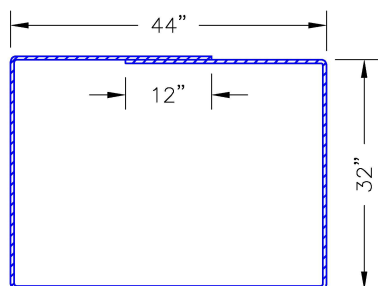
- P4) 24" x 36" - CASTING HEIGHT - 6"
- P3) 24" x 36" - GRADE RING F/F - 3"
- P2) 48" - MH FLAT TOP w/24"x36" Hole F/G - 12"
- P1) 48" - MH BASE T/n - 48"
- 1) CASTING - HOE 525 SET (F/G/H)
- 1) 48" - Conseal CS-102 1.00"
- 2) 24" x 36" - Conseal CS-102 1.00"
- 1) Hole - 26
- 1) Hole - 14
- 1) Hole - 22
- 4) MH Step ML-10-TDS-NCR - 10"

0 lb
 306 lb
 1300 lb
 4220 lb
 442 lb
 0 lb
 0 lb
 0 lb
 0 lb
 0 lb
 0 lb
 0 lb
 Structure Total: 6268 lb

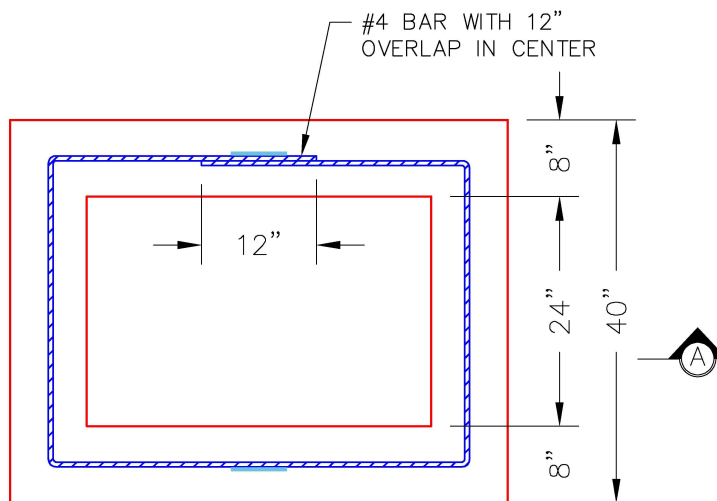
- Structure Notes:**
1. PER ASTM C-913 SPECIFICATIONS
 2. CONCRETE: 4,000 PSI AT 28 DAYS
 3. REINFORCEMENT: #4 BAR AS SHOWN (GRADE 60)
 4. LIFTERS: 2 EA. WRA016 CONAC WIRE ROPE ANCHORS FOR PLANT & FIELD HANDLING



ISOMETRIC VIEW

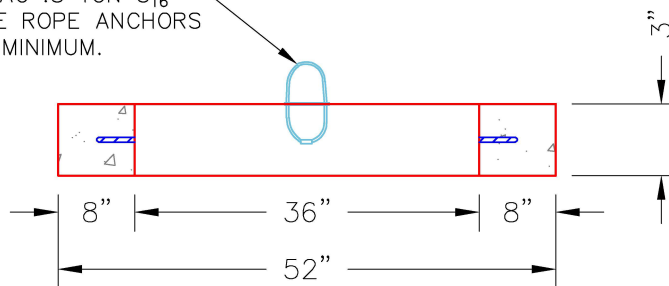


#4 BAR REINFORCING



PLAN VIEW

2 EA. CONAC .8 TON $8\frac{1}{16}$ " (6MM) WIRE ROPE ANCHORS REQUIRED—MINIMUM.



SECTION A-A

Coating (Int):
 Coating (Ext):

Seam Up: Flat
 Seam Dn: Flat

Wall Thickness: 8"

Height (Ext): 3"

Weight (Net): 306 lb
 Volume (Net): 0.08cu.yd