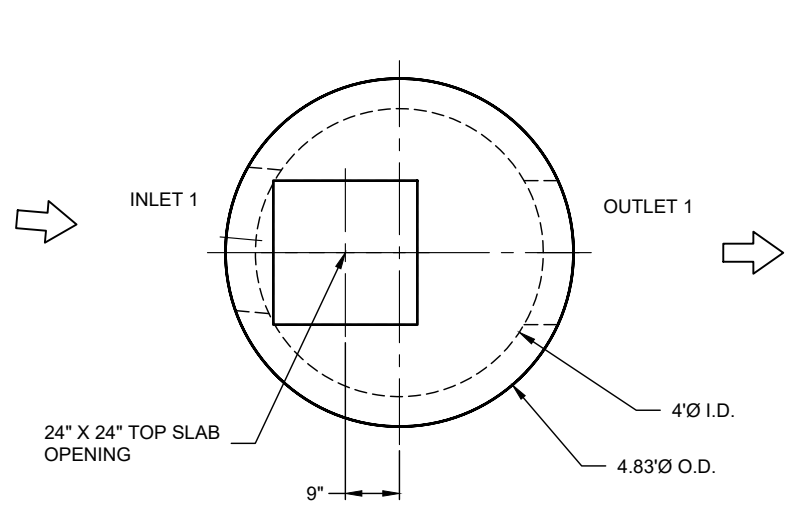
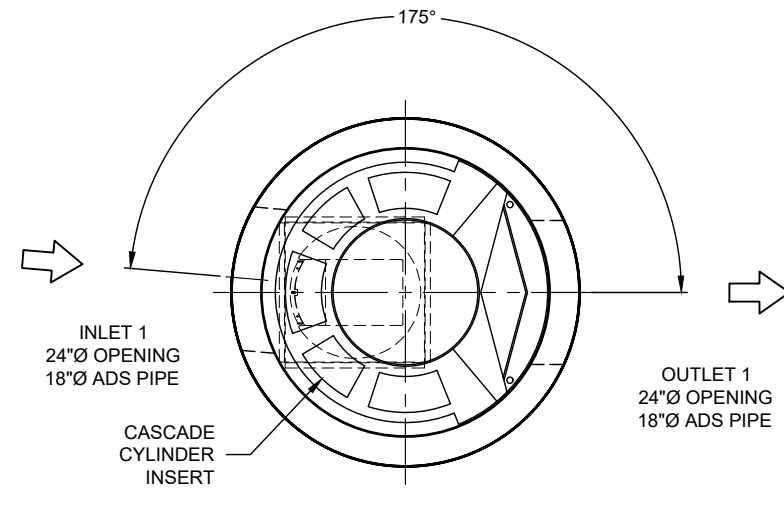


25-4627 - 865800 Simpsonville Elementary School



PLAN VIEW
INTERNALS NOT SHOWN

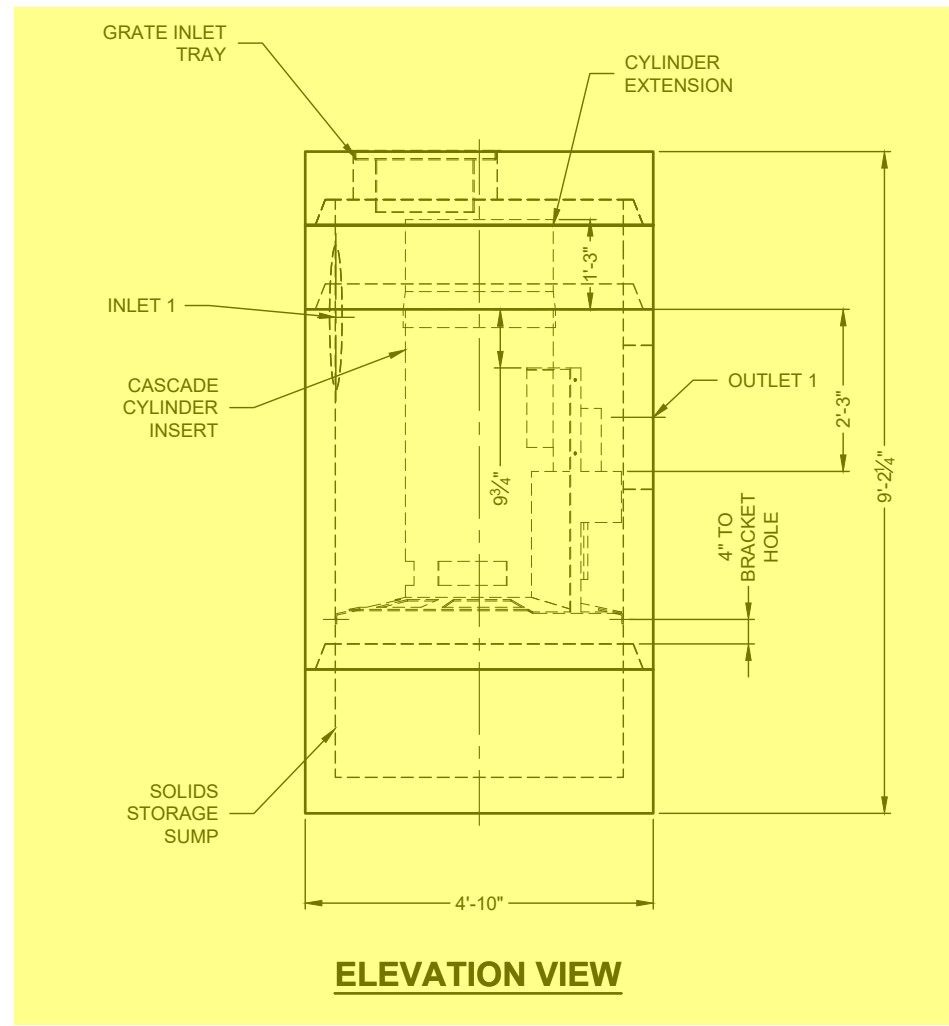


PLAN VIEW FOR PIPE ORIENTATION
TOP SLAB NOT SHOWN

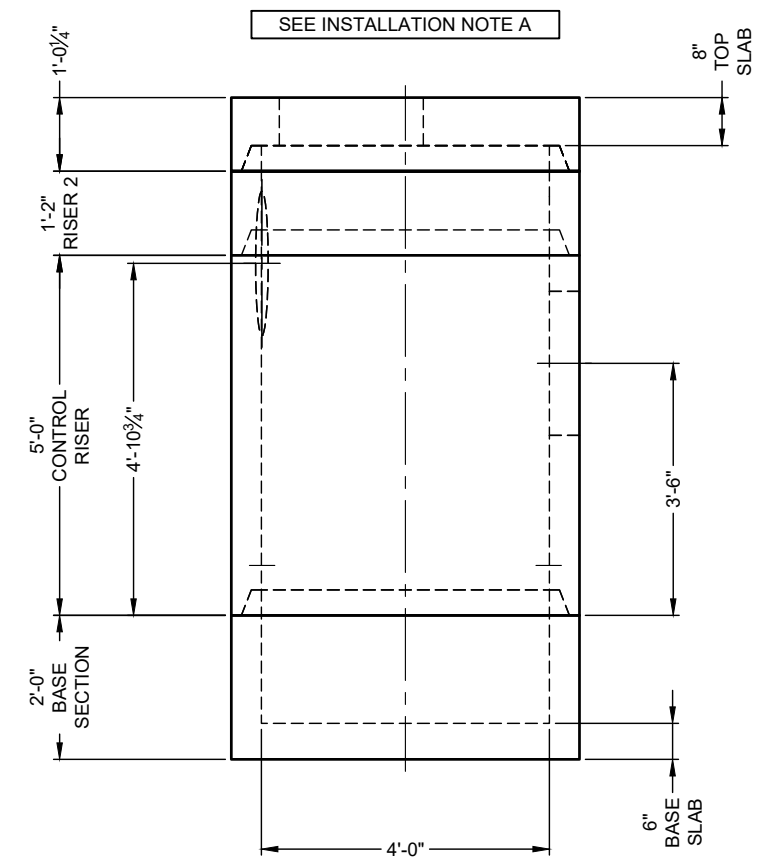
INSTALLER TO TRIM CYLINDER TO DIMENSIONED HEIGHT

SEE INSTALLATION NOTE A

10-CS-4
ICAST to fully pre-assemble internal materials prior to shipment.



ELEVATION VIEW



PRECAST COMPONENTS
INTERNALS NOT SHOWN

ICAST
5888 / 757440
LAYOUT 1A
4.73TS

CONTECH
FABRICATION
DRAWING

MATERIAL LIST

COUNT	DESCRIPTION	PART NUMBER	PROVIDED BY	INSTALLED BY
1	CS-4 CYLINDER INSERT, STD.	325-003949	CONTECH	PRECASTER
4	CS-4 ALUMINUM INSTALLATION BRACKETS	325-003956	CONTECH	PRECASTER
1	CS-4 HARDWARE KIT	325-003955	CONTECH	PRECASTER
1	CS-4 FIBERGLASS CYLINDER EXTENSION, 2 FT.	325-003958	CONTECH	CONTRACTOR
1	SEALANT FOR JOINTS		PRECASTER	CONTRACTOR
1	GRATE INLET TRAY	325-001751	CONTECH	CONTRACTOR
1	24" X 24" CURB INLET, EJ#0719131C01, OR EQUIV.	325-002934	CONTECH	CONTRACTOR

GENERAL NOTES

- DESIGN LOADING - AASHTO HS-20
- ALL PRECAST CONCRETE MANUFACTURED PARTS SHALL CONFORM TO ASTM C-478, WITH MINIMUM CONCRETE STRENGTH OF 4000 PSI AT 28 DAYS
- JOINT SEALANT SHALL CONFORM TO ASTM C-990 OR ASTM C-443
- GROUND WATER ELEVATION ASSUMED AT OUTLET INVERT
- MANUFACTURING TOLERANCE = +/- 1/2-INCH
- SOME HIDDEN LINES MAY BE OMITTED FOR CLARITY

INSTALLATION NOTES

- PRECASTER TO SHIP ACCESS CASTINGS WITH STRUCTURE
- REFER TO CONTECH ASSEMBLY INSTRUCTIONS FOR ADDITIONAL INFORMATION.
- PRECASTER TO INSTALL INTERNAL COMPONENTS PRIOR TO SHIPPING UNLESS INSTRUCTED OTHERWISE BY CONTECH
- PIPE OPENINGS SHALL BE STENCILED "INLET" OR "OUTLET" AS APPROPRIATE
- APPLYING ALIGNMENT MARKS ON ALL PIECES OF MULTIPLE PIECE ASSEMBLIES IS ENCOURAGED
- IF STRUCTURE IS DELIVERED IN MULTIPLE SECTIONS, EACH PIECE SHALL BE LABELED WITH THE CONTECH PROJECT NUMBER, SEQUENCE NUMBER AND SITE DESIGNATION

SITE INFORMATION

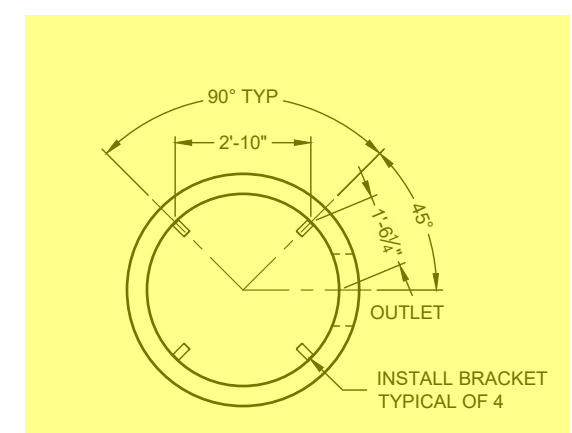
RIM ELEV. = 778.52+/-
TOP OF STRUCTURE = 778.07
INLET PIPE 1 INVERT ELEV. = 775.02
INLET PIPE 1 DIAMETER AND MATERIAL = 18"Ø ADS

OUTLET PIPE INVERT ELEV. = 773.63
OUTLET PIPE DIAMETER AND MATERIAL = 18"Ø ADS
OUTSIDE BOTTOM OF STRUCTURE ELEV. = 768.88

STRUCTURE WEIGHT

APPROXIMATE HEAVIEST PICK = 7500 LBS.
STRUCTURE IS DELIVERED IN 4 PIECES

TOP SLAB = 2000 LBS.
RISER 2 = 1000 LBS. LBS.
CONTROL RISER = 4500 LBS
BASE SECTION = 7500 LBS.



SUPPORT BRACKET LAYOUT PLAN VIEW

The design and information shown on this drawing is the property of CONTECH Construction Products, Inc. or one of its affiliated companies ("CONTECH"). Neither this drawing, nor any part thereof, may be used, reproduced, or transmitted in any form or by any means, electronic or mechanical, including photocopying, recording, or by any information storage and retrieval system, without the prior written consent of CONTECH. Failure to comply with these terms and conditions shall constitute an acknowledgment of the user's own risk and CONTECH expressly disclaims any liability or responsibility for such use.

If discrepancies between the supplied information upon which the drawing is based and actual field conditions are encountered as site work progresses, these are to be immediately reported to the design engineer. CONTECH immediately for re-evaluation of the design. CONTECH accepts no liability for designs based on missing, incomplete or inaccurate information supplied by others.

MARK	DATE	REVISION DESCRIPTION	BY

CS-4 - 865800-10
SIMPSONVILLE ELEMENTARY SCHOOL -
SHELBY COUNTY
SIMPSONVILLE, KY
SITE DESIGNATION: S-4 WQU

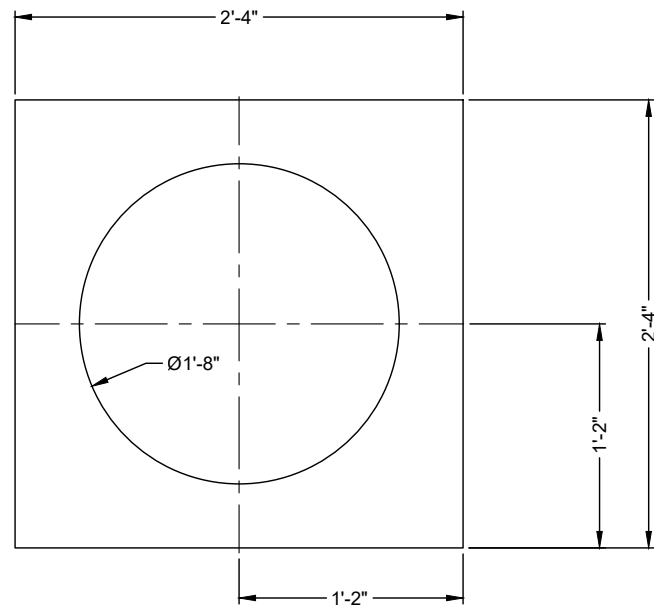
CONTECH
ENGINEERED SOLUTIONS LLC
A CONTECH COMPANY
810 Centre Pointe Dr., Suite 400, West Chester, OH 45380
800.338.1122 513.645.7000 513.645.7803 FAX

CASCADE
separator
FOR PATENT INFORMATION, GO TO www.contech.com/IP

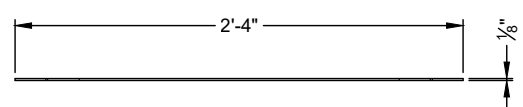
DATE: 9/10/2025	
DESIGNED: MDB	DRAWN: MDB
CHECKED: CEU	APPROVED: MDB
PROJECT No.: 865800	SEQUENCE No.: 10
SHEET: 1	OF 1

I:\PSU\WORK\TVC\RMF01-QUIKRETE.NET\IN\PROJECT\ACTIVE\865800\865800-10-CS-4.CONFAB.DWG 11/28/2025 11:12 AM

25-4627 - 865800 Simpsonville Elementary School

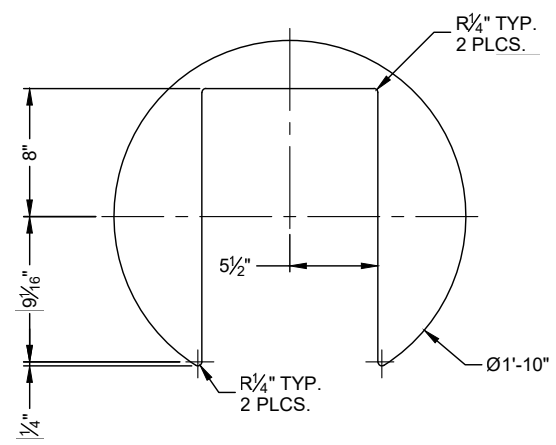


PLAN VIEW



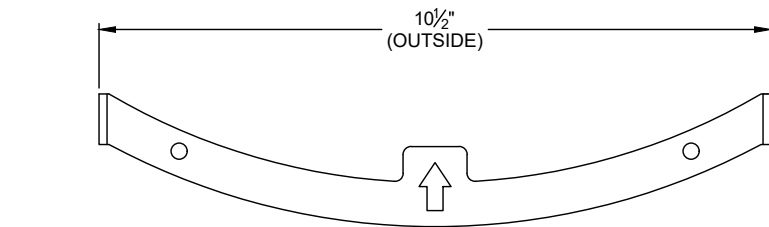
ELEVATION VIEW

MOUNTING PLATE DETAILS

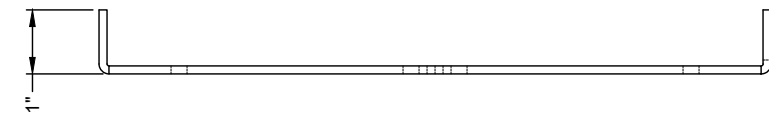


PLAN VIEW

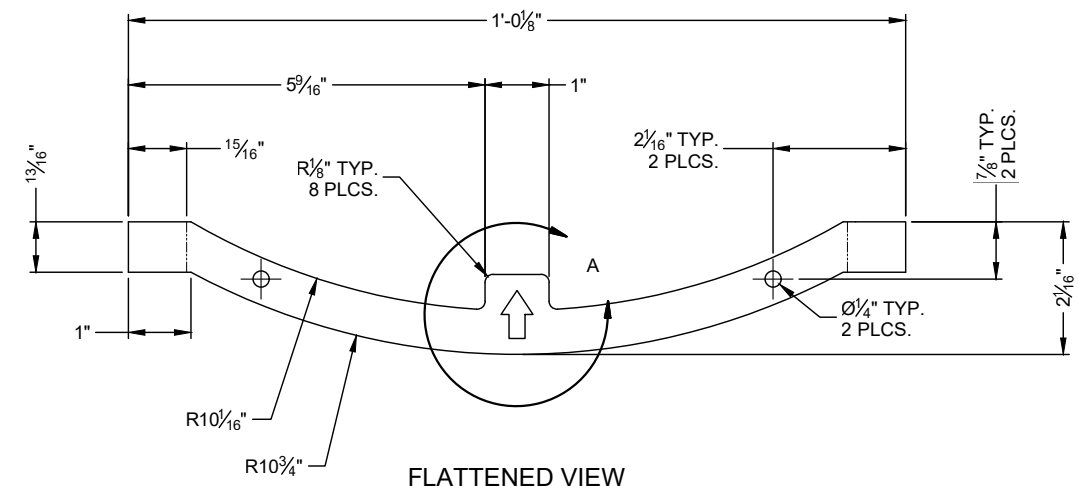
TRAY SUPPORT DETAILS



PLAN VIEW



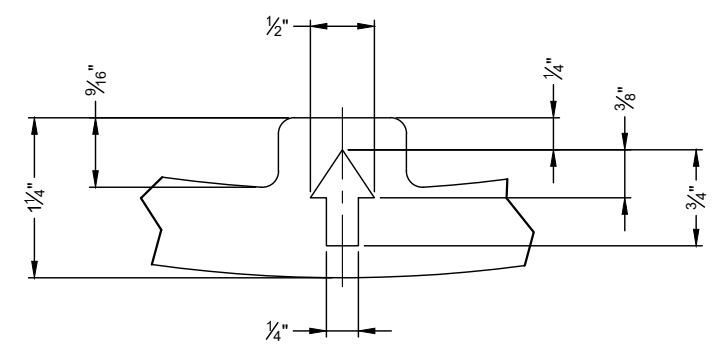
ELEVATION VIEW



FLATTENED VIEW

INDEXER DETAILS

SCALE: 3" = 1'-0"



DETAIL A

NOT TO SCALE

CONTECH
FABRICATION
DRAWING

DIMENSIONS ARE IN INCHES DEBUR EDGES BREAK CORNERS
MAKE ALL TROUGHS AND INLET/OUTLET PLATES IN SETS TO ENSURE FIT
MATERIAL: 3/16" THICK 5052-H32 ALUMINUM ALLOY
ALL BEND RADII EQUAL TO MATERIAL THICKNESS

TOLERANCES:
FRACTIONAL: +/- 1/16 INCH TWO PLACE DECIMAL: 0.12
ANGULAR: MACH +/-1 INCH, BEND +/-1 DEG. THREE PLACE DECIMAL: 0.060

The design and information shown on this drawing is the property of CONTECH ENGINEERED SOLUTIONS LLC or one of its affiliated companies ("CONTECH"). Neither this drawing nor any part thereof, may be used, copied, or reproduced in any form without the written consent of CONTECH. Failure to comply with the terms of this agreement shall constitute a breach of contract and CONTECH expressly disclaims any liability or responsibility for such use. If discrepancies between the supplied information upon which the drawing is based and actual field conditions are encountered, the user shall be responsible for immediately notifying CONTECH. CONTECH accepts no liability for designs based on missing, incomplete or inaccurate information supplied by others.

MARK	DATE	REVISION DESCRIPTION	BY
3	3/13/24	CHANGE MOUNTING PAN TO PLATE	NDG
2	7/23/20	EXTENDED BOTTOM PLATE	NDG
1	3/24/17	NEW FORMAT	NDG

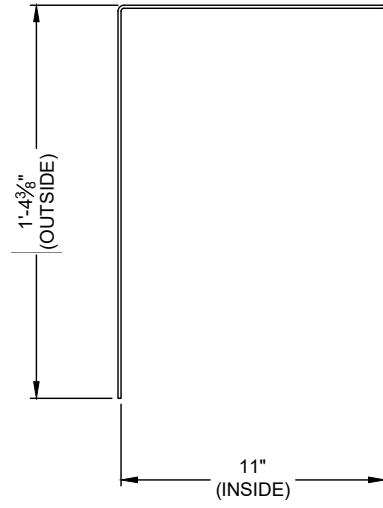
GRATE INLET TRAY DETAILS
USE WITH 24" SQUARE TOP SLAB OPENING
MOUNTING PLATE, SUPPORT AND
INDEXER DETAILS

CONTECH
ENGINEERED SOLUTIONS LLC
www.contechES.com
9025 Centre Pointe Dr., Suite 400, West Chester, OH 45689
800-338-1122 513-645-7000 513-645-7995 FAX

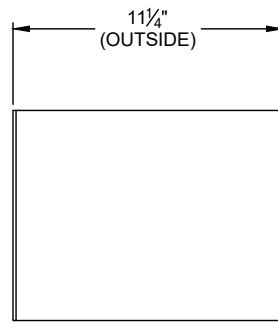
DATE:	10/6/16
DESIGNED:	GWB
DRAWN:	NDG
CHECKED:	GWB
APPROVED:	GWB
PROJECT No.:	N/A
SEQUENCE No.:	N/A
SHEET:	1 OF 2

I:\COMMON\CAD\TREATMENT\68 PROJECT SPA\GRATE INLET TRAY DETAILS\DWG\24-INCH SQ GRATE INLET TRAY DETAILS.DWG 3/13/2024 12:47 PM

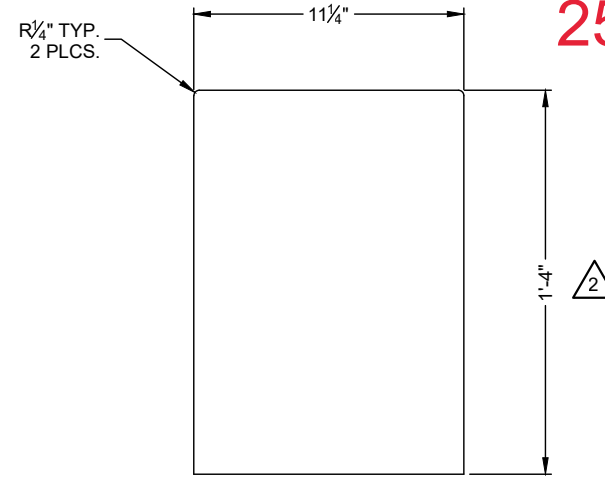
25-4627 - 865800 Simpsonville Elementary School



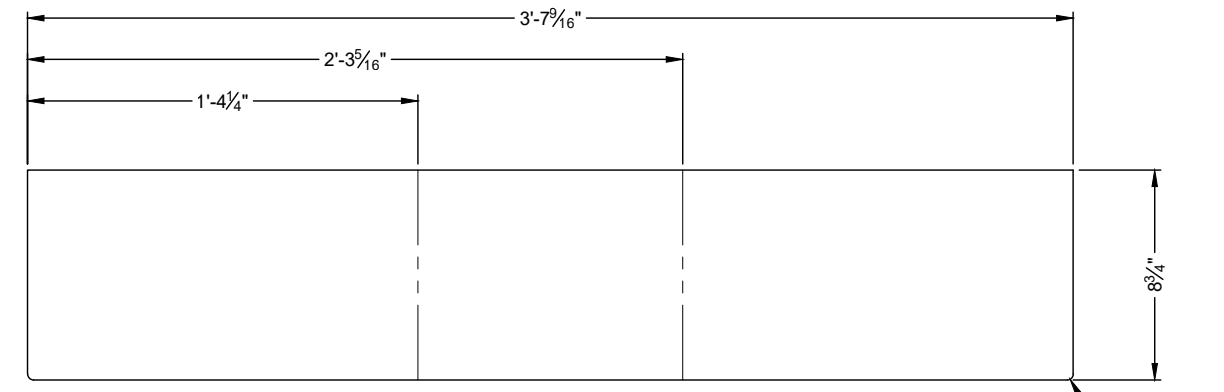
PLAN VIEW
TRAY WALL



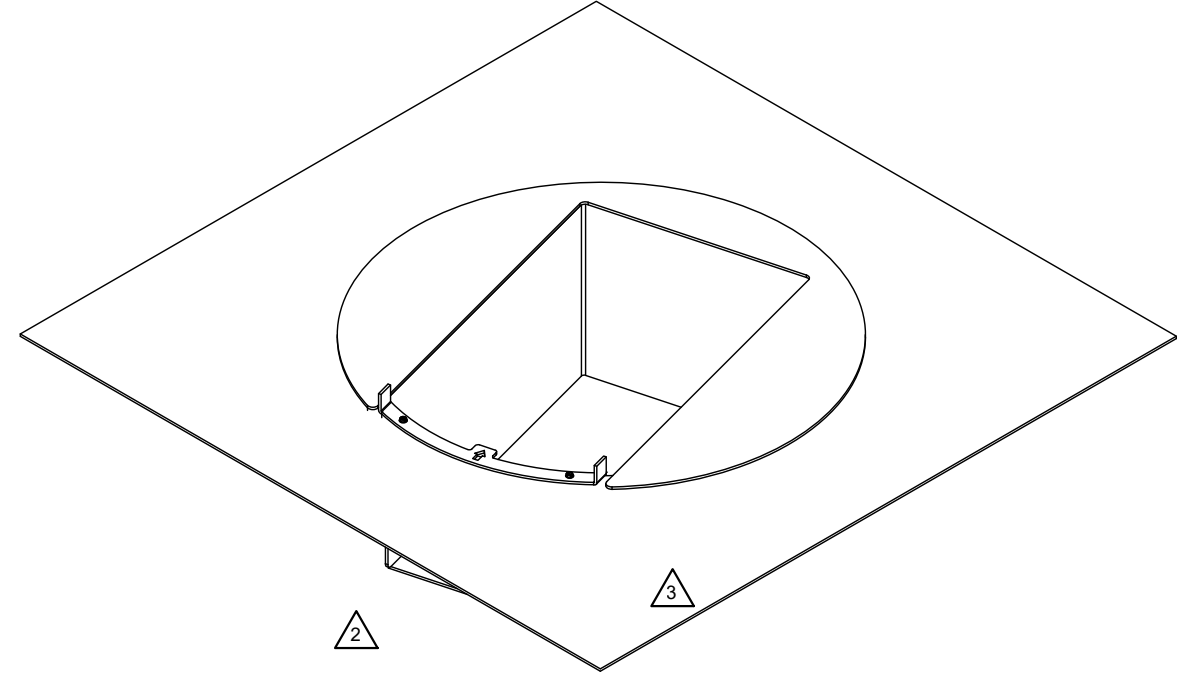
ELEVATION VIEW
TRAY WALL



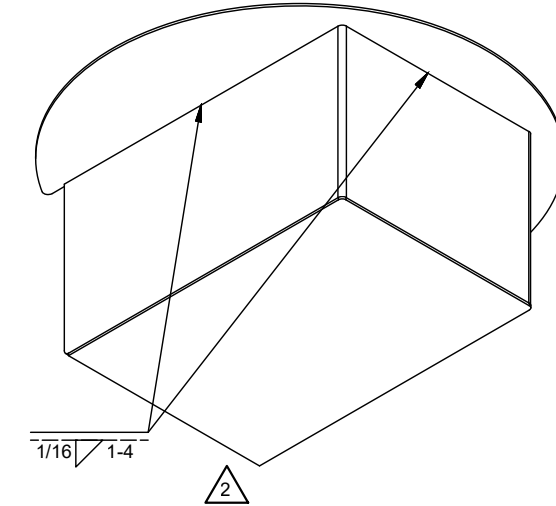
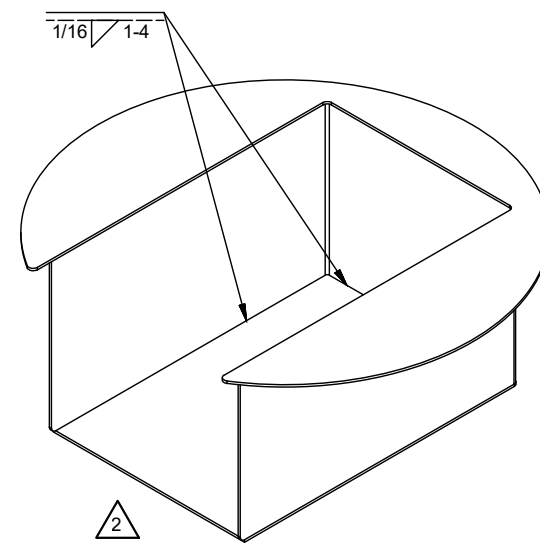
PLAN VIEW
TRAY BOTTOM PLATE



FLATTENED VIEW
TRAY WALL



ASSEMBLED VIEW
NOT TO SCALE



ISOMETRIC VIEWS
NOT TO SCALE

DIMENSIONS ARE IN INCHES DEBUR EDGES BREAK CORNERS
 MAKE ALL TROUGHS AND INLET/OUTLET PLATES IN SETS TO ENSURE FIT
 MATERIAL: 3/16" THICK 5052-H32 ALUMINUM ALLOY
 ALL BEND RADII EQUAL TO MATERIAL THICKNESS

TOLERANCES:
 FRACTIONAL: +/- 1/16 INCH TWO PLACE DECIMAL: 0.12
 ANGULAR: MACH +/-1 INCH, BEND +/-1 DEG. THREE PLACE DECIMAL: 0.060

The design and information shown on this drawing is the property of CONTECH ENGINEERED SOLUTIONS LLC or one of its affiliated companies ("CONTECH"). Neither this drawing nor any part thereof, may be used, copied, or reproduced in any form without the written consent of CONTECH. Failure to comply is done at the user's own risk and CONTECH expressly disclaims any liability or responsibility for such use. If discrepancies between the supplied information upon which the drawing is based and actual field conditions are encountered in the work program, the user shall immediately notify CONTECH. CONTECH accepts no liability for designs based on missing, incomplete or inaccurate information supplied by others.

MARK	DATE	REVISION DESCRIPTION	BY
3	3/13/24	CHANGE MOUNTING PAN TO PLATE	NDG
2	7/23/20	EXTENDED BOTTOM PLATE	NDG
1	3/24/17	NEW FORMAT	NDG

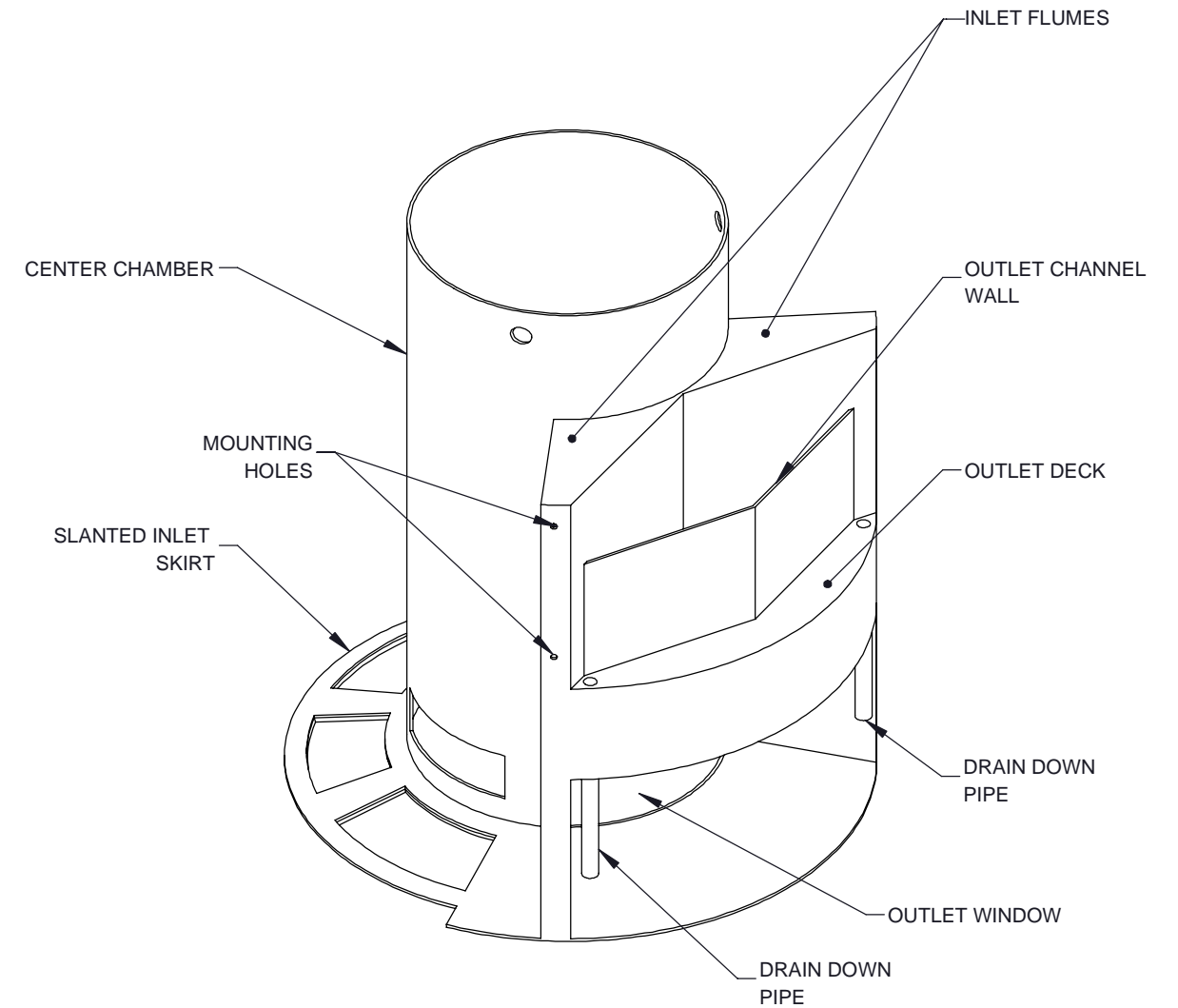
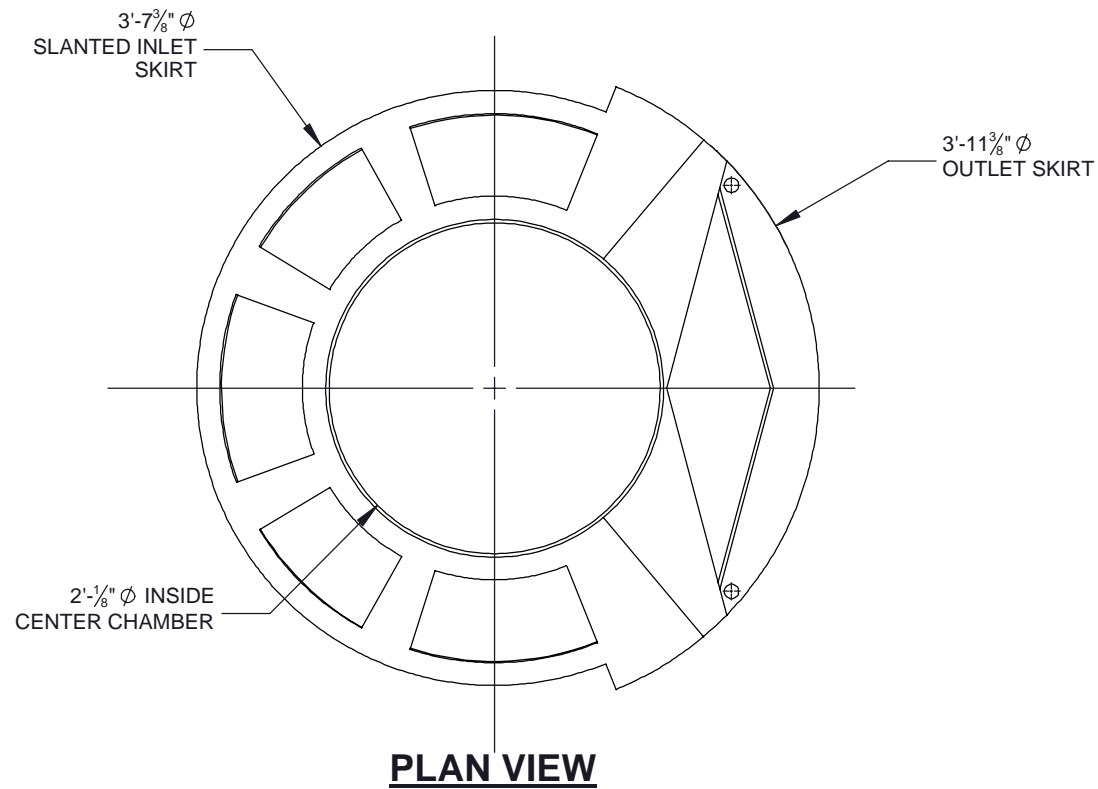
GRATE INLET TRAY DETAILS
 USE WITH 24" SQUARE TOP SLAB OPENING
 MOUNTING PLATE, SUPPORT AND
 INDEXER DETAILS

CONTECH
 ENGINEERED SOLUTIONS LLC
 www.contechES.com
 9025 Centre Pointe Dr., Suite 400, West Chester, OH 45389
 800-335-1122 513-645-7000 513-645-7955 FAX

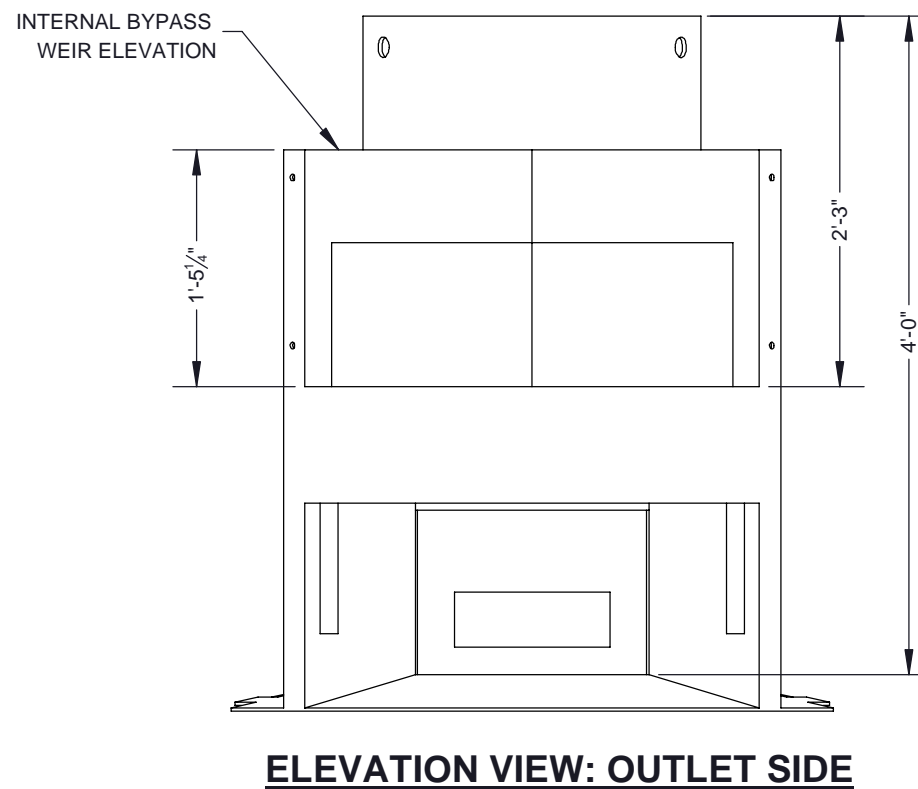
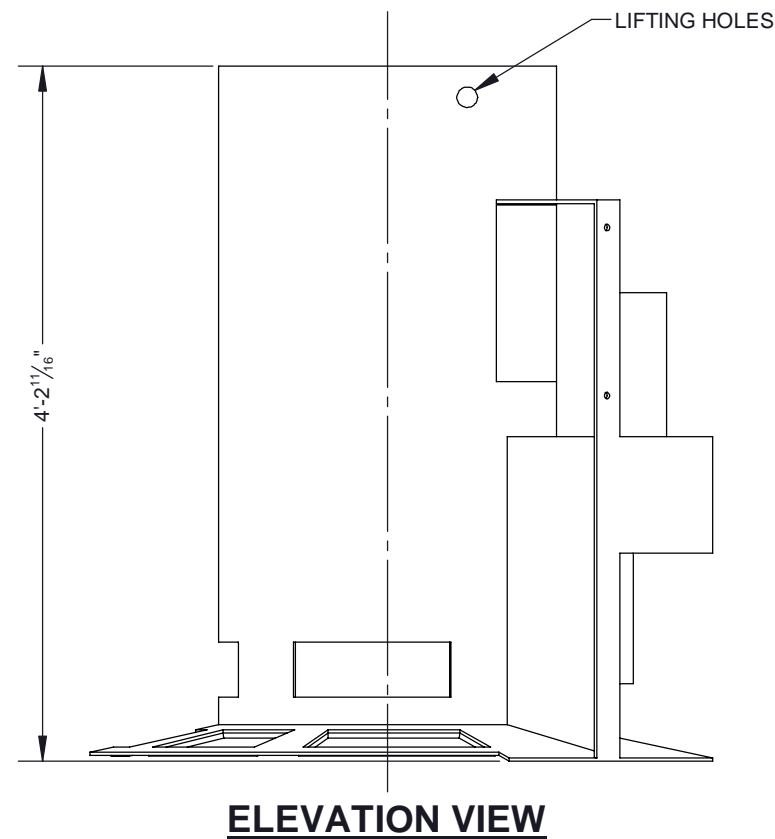
DATE: 10/6/16	
DESIGNED: GWB	DRAWN: NDG
CHECKED: GWB	APPROVED: GWB
PROJECT No.: N/A	SEQUENCE No.: N/A
SHEET: 2 OF 2	

CONTECH
FABRICATION
 DRAWING

I:\COMMON\CAD\TREATMENT\88 PROJECT SPA\GRATE INLET TRAY DETAILS\DWG\24-INCH SQ GRATE INLET TRAY DETAILS.DWG 3/13/2024 12:47 PM



NOTES:
1. SEE CASCADE SEPARATOR INSTALLATION GUIDE FOR ADDITIONAL INFORMATION



The design and information shown on this drawing is provided as a service to the project owner, engineer and contractor by Contech Engineered Solutions LLC, or one of its affiliated companies ("Contech"). Neither this drawing, nor any part thereof, may be used, reproduced or modified in any manner without the prior written consent of Contech. Failure to comply is done at the user's own risk and Contech expressly disclaims any liability or responsibility for such use.

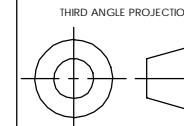
If discrepancies between the supplied information upon which the drawing is based and actual field conditions are encountered as site work progresses, these discrepancies must be reported to Contech immediately for re-evaluation of the design. Contech accepts no liability for designs based on missing, incomplete or inaccurate information supplied by others.

CASCADE
separator™

CONTECH
ENGINEERED SOLUTIONS LLC

www.ContechES.com
9025 Centre Pointe Dr., Suite 400, West Chester, OH 45069
800-338-1122 513-645-7000 513-645-7993 FAX

REFERENCE DETAIL
INTERNALS CS-4
CASCADE SEPARATOR



UNLESS OTHERWISE SPECIFIED
DIMENSIONS ARE IN INCHES

TOLERANCES:
FRACTIONAL ± 1/16
ANGLES ± 1 DEGREE
TWO PLACE DECIMAL ± 0.06
THREE PLACE DECIMAL ± 0.030

PART NUMBER: 325-003949		
APPROVED BY: M. BROOKS	DRAWN BY: M. BROOKS	
APPROVED BY DATE: 2021.10.21	DRAWN BY DATE: 2021.09.14	REV: B
SCALE: N/A	SHEET 1 OF 1	