

Job Name: 25-4627 - 865800 Simpsonville Elementary School
 Job Location: Simpsonville, KY
 Contractor: Contech Engineering Solutions

Plant: Beaver Dam

12/9/2025 3:16:53 PM

Tech: J. Coppage

PC: T. Sekula



Structure ID: 10-CS-4

P4 MH048LD12-24SQ

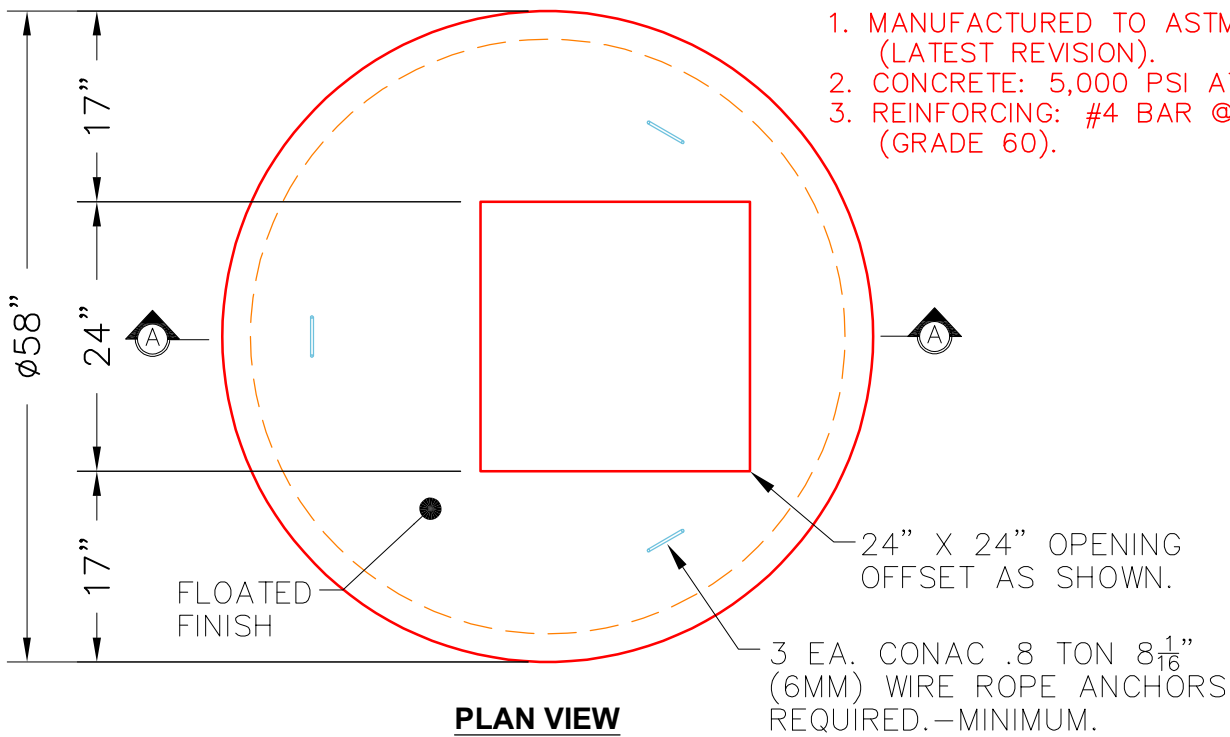
MH FLAT TOP w/24"x24" Hole

- P5) 24" x 24" - CASTING HEIGHT - 5"
- P4) 48" - MH FLAT TOP w/24"x24" Hole - 12"
- P3) 48" - MH RISER Custom Ht - 14"
- P2) 48" - MH RISER NO STEPS - 60"
- P1) 48" - MH BASE Custom Ht - 18"
- 1) ASSEMBLY REQUIRED
- 1) CVSTENCILING
- 3) 48" - Conseal CS-102 1.00"
- 1) 24" x 24" - Conseal CS-102 1.00"
- 2) Hole - 24"

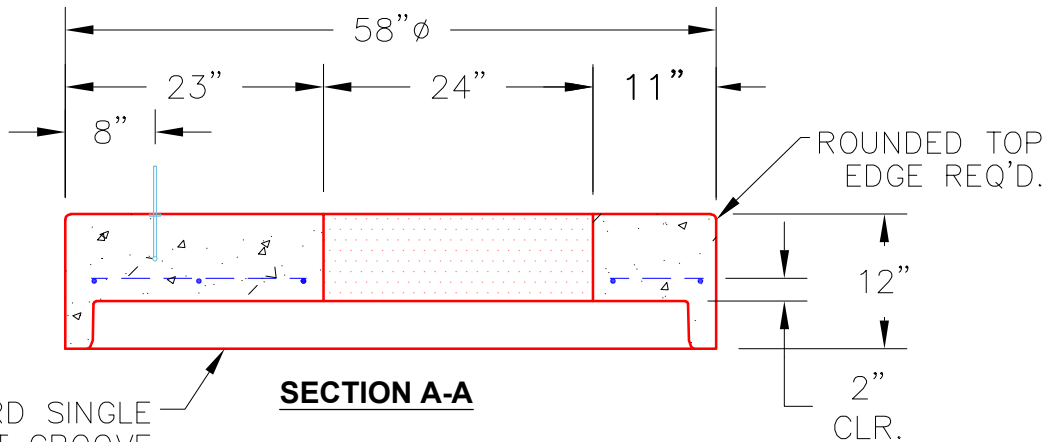
0 lb Structure Notes:
 1500 lb (5" TALL CASTING PROVIDED BY OTHERS)
 893 lb
 3882 lb
 2588 lb LIFTING ANCHORS TO BE INSTALLED
 0 lb ON THE OUTSIDE OF THE STRUCTURE
 0 lb
 0 lb ICAST TO INSTALL THE INTERNALS
 0 lb
 0 lb
 0 lb CONTECH'S LOGO AS WELL AS THE
 Structure Total: 8863 lb INLET AND THE OUTLET MUST BE
 STENCILED ONTO THE STRUCTURE.

NOTES:

1. MANUFACTURED TO ASTM C-478 (LATEST REVISION).
2. CONCRETE: 5,000 PSI AT 28 DAYS.
3. REINFORCING: #4 BAR @ 10" O.C. E.W. (GRADE 60).



PLAN VIEW



SECTION A-A

Coating (Int):
 Coating (Ext):

Seam Up: Flat
 Seam Dn: Groove

Wall Thickness: 5"

Height (Ext): 12"

Weight (Net): 1500 lb
 Volume (Net): 0.37cu.yd