

Job Name: 25-4616 - 781070 Bohannon Tract 5
 Job Location: Louisville, KY
 Contractor: Contech Engineering Solutions

Plant: Beaver Dam

12/4/2025 12:31:38 PM

Tech: J. Coppage

PC: T. Sekula



Structure ID: 15-CS-4

P3 MH048LD12-30

MH FLAT LID w/30in ECC Hole

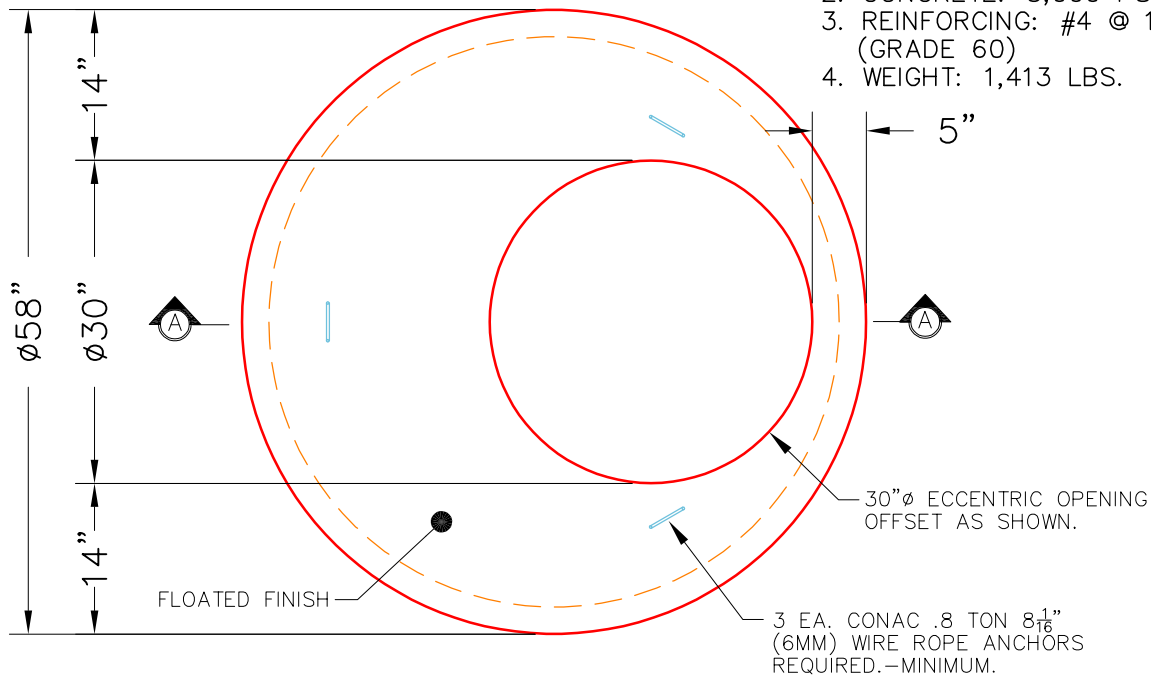
- P4) 30" - CASTING HEIGHT - 4"
- P3) 48" - MH FLAT LID w/30in ECC Hole - 12"
- P2) 48" - MH RISER NO STEPS - 60"
- P1) 48" - MH BASE - 12"
- 1) ASSEMBLY REQUIRED
- 1) CVSTENCILING
- 2) 48" - Conseal CS-102 1.00"
- 2) Hole - 16

Structure Notes:
 (4" TALL CASTING PROVIDED BY OTHERS)
 ICAST TO INSTALL THE INTERNALS
 CONTECH'S LOGO AS WELL AS THE INLET
 AND THE OUTLET MUST BE STENCILED
 ONTO THE STRUCTURE
 LIFTING ANCHORS TO BE INSTALLED
 ON THE OUTSIDE OF THE STRUCTURE

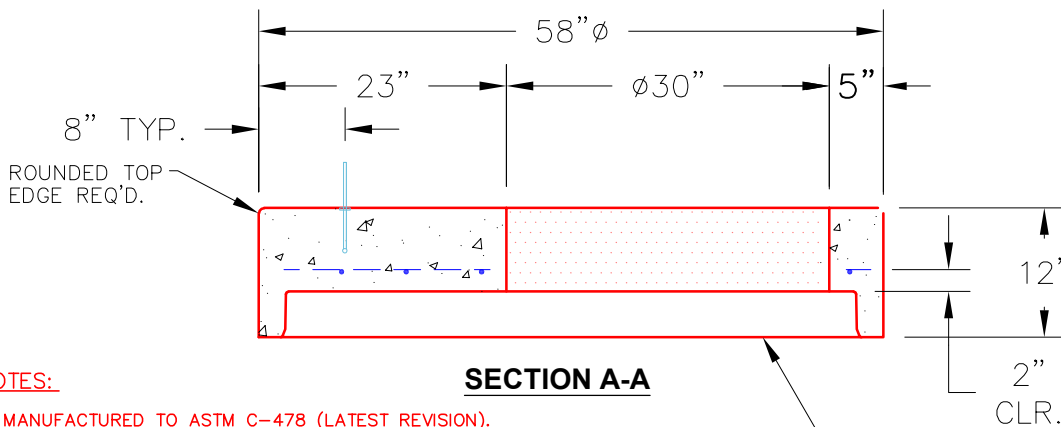
Structure Total: 7575 lb

NOTES:

1. MANUFACTURED TO ASTM C-478 (LATEST REVISION).
2. CONCRETE: 5,000 PSI AT 28 DAYS.
3. REINFORCING: #4 @ 10" O.C. E.W. (GRADE 60)
4. WEIGHT: 1,413 LBS.



PLAN VIEW



NOTES:

1. MANUFACTURED TO ASTM C-478 (LATEST REVISION).
2. CONCRETE: 5,000 PSI AT 28 DAYS.
3. REINFORCING: #4 BAR @ 10" O.C. E.W. (GRADE 60).

| | | | | |
|----------------------------------|----------------------------------|--------------------|-------------------|--|
| Coating (Int): Coating (Ext): | Seam Up: Flat Seam Dn: Groove | Wall Thickness: 5" | Height (Ext): 12" | Weight (Net): 1413 lb Volume (Net): 0.36cu.yd |
|----------------------------------|----------------------------------|--------------------|-------------------|--|